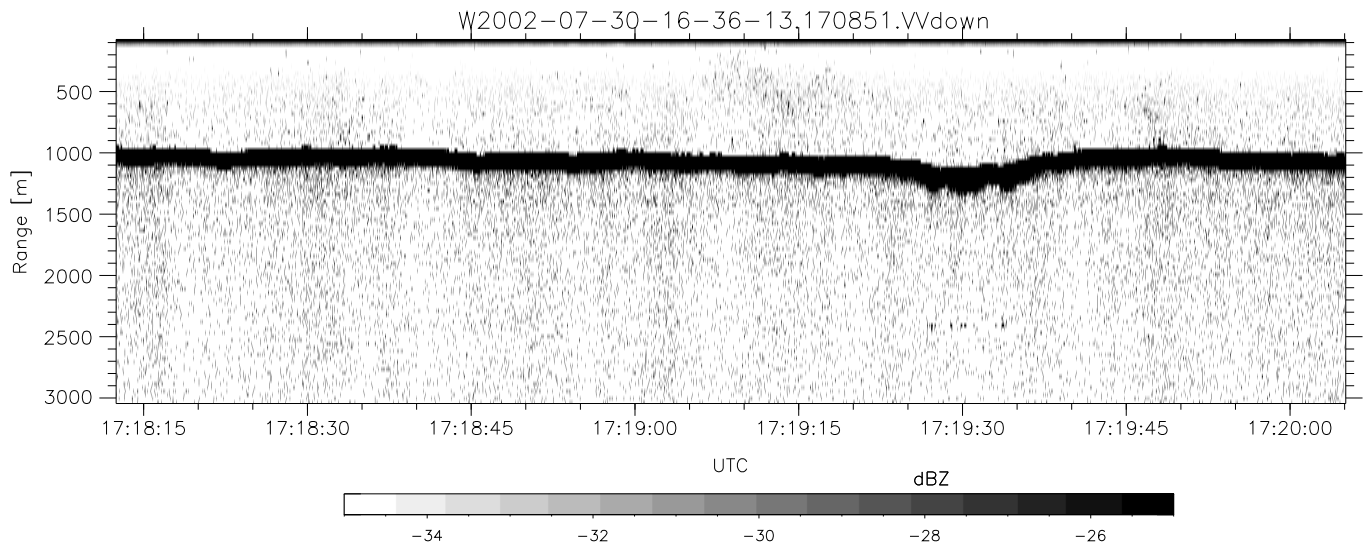
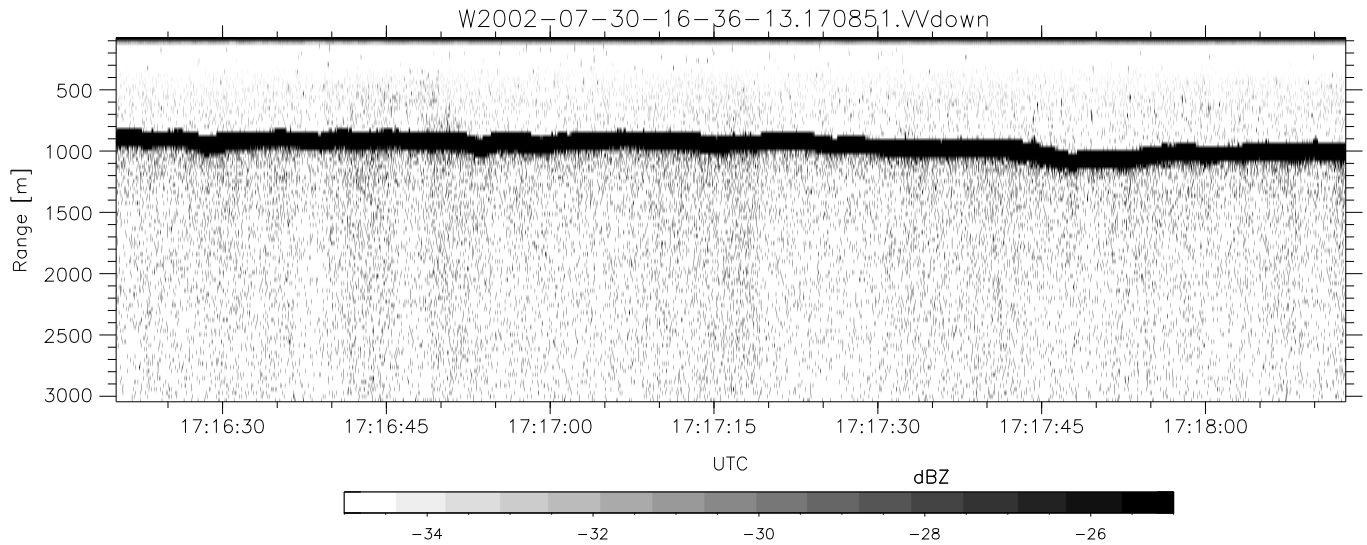
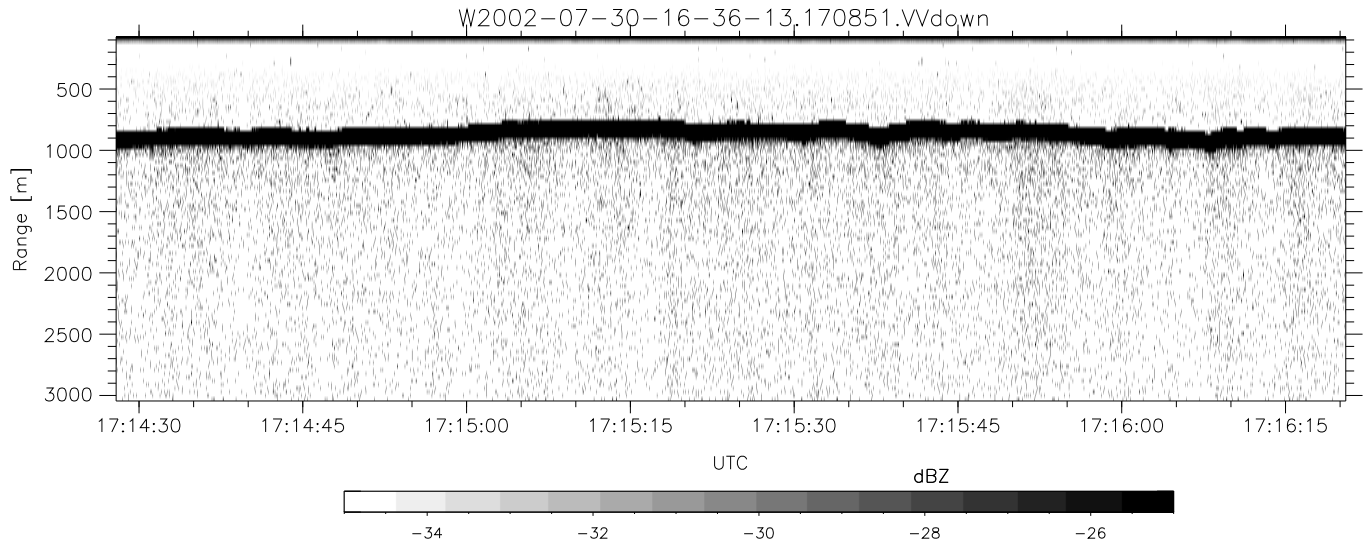


HiCu 2002 (dual-antenna config, modes 1,3,4,5,6,7) Data (cal: 55.0,50.0)

W2002-07-30-16-36-13 - SPPMAG
 IRIG:1,UTC: 16:36:00.34 to 17:20:54.85, Dur: 2694s
 TimeLngth: 2694.51s, TimeInt: 29ms (33.6pps)
 TimeCor=-13.0s, DSPDif(mn,min,mx):29,28,145
 PPS(min,max,std): 30,35,1.47
 Prof: 344 to 90949, NumProf(t/r): 90605/24337
 ProcTime/Recs: 17:08:51-17:20:54/66268-90604
 MxACQtime: 26ms; DRate: 54.2KB/s; Flags: 0, 0, 0
 Pulse: 275ns, IFfilt: 5.0MHz; ppPol: VV
 TxPol: V, PRF: 20 kHz
 Range: Delay 75m, Spacing 30m, Gates 100
 Ave. Pulses: 520, Rng/Prof Aspect@90m/s: 11.2

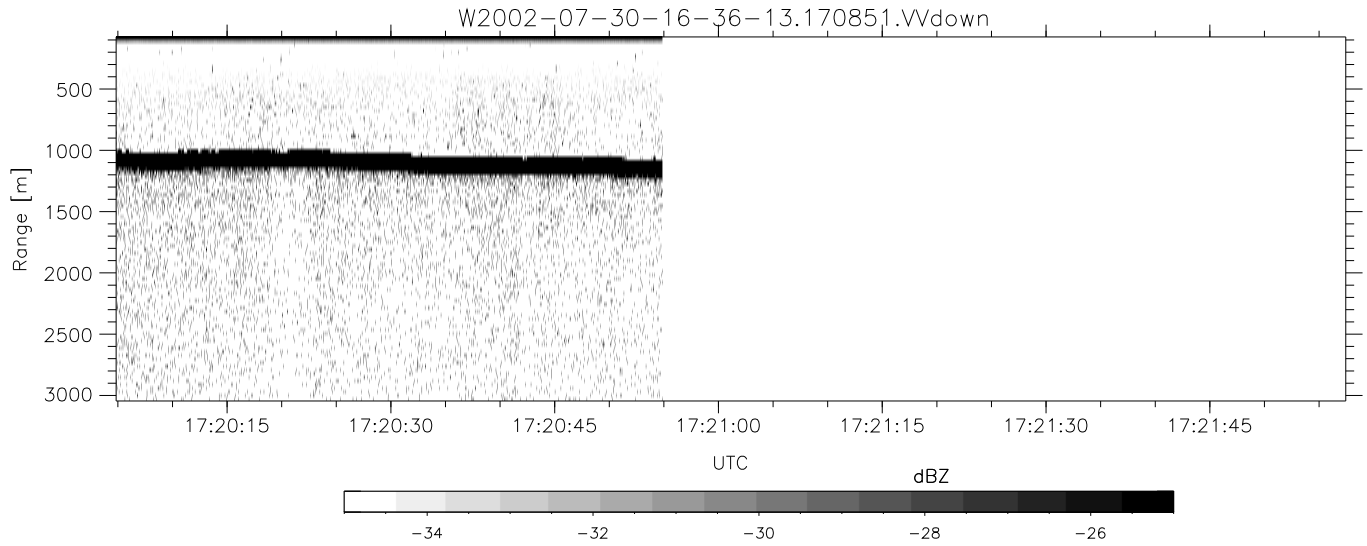
	Min	Max	Mean	Std	Varc%
hhN(dB)	-70.81	-69.40	-70.08	-83.93	4.1
vvN(dB)	-67.04	-65.58	-66.22	-79.88	4.3
vvL(dB)	-10.92	-3.21	-4.94	-11.09	24.3
hvL(dB)	-70.81	-69.40	-70.05	-83.90	4.1
ppN(m/s)	-15.80	15.80	0.02	9.10	
ppT(m/s)	-0.01	0.01	-0.00	0.00	
hv/vv(dB)	-NaN	-42.11	-NaN	-52.64	-194
hn_jmp(dB)	-1.08	0.72	-0.12	-12.74	5.5
vn_jmp(dB)	-1.04	0.79	-0.15	-12.72	5.5



HiCu 2002 (dual-antenna config, modes 1,3,4,5,6,7) Data (cal: 55.0,50.0)

W2002-07-30-16-36-13 - SPPMAG
 IRIG:1,UTC: 16:36:00.34 to 17:20:54.85, Dur: 2694s
 TimeLngth: 2694.51s, TimeInt: 29ms (33.6pps)
 TimeCor=-13.0s, DSPDif(mn,min,mx):29,28,145
 PPS(min,max,std): 30,35,1.47
 Prof: 344 to 90949, NumProf(t/r): 90605/24337
 ProcTime/Recs: 17:08:51-17:20:54/66268-90604
 MxACQtime: 26ms; DRate: 54.2KB/s; Flags: 0, 0, 0
 Pulse: 275ns, IFfilt: 5.0MHz; ppPol: VV
 TxPol: V, PRF: 20 kHz
 Range: Delay 75m, Spacing 30m, Gates 100
 Ave. Pulses: 520, Rng/Prof Aspect@90m/s: 11.2

	Min	Max	Mean	Std	Varc%
hhN(dB)	-70.81	-69.40	-70.08	-83.93	4.1
vvN(dB)	-67.04	-65.58	-66.22	-79.88	4.3
vvL(dB)	-10.92	-3.21	-4.94	-11.09	24.3
hvL(dB)	-70.81	-69.40	-70.05	-83.90	4.1
ppN(m/s)	-15.80	15.80	0.02	9.10	
ppT(m/s)	-0.01	0.01	-0.00	0.00	
hv/vv(dB)	-NaN	-42.11	-NaN	-52.64	-194
hnjmp(dB)	-1.08	0.72	-0.12	-12.74	5.5
vnjmp(dB)	-1.04	0.79	-0.15	-12.72	5.5



HiCu 2002 (dual-antenna config, modes 1,3,4,5,6,7) Data (cal: 55.0,50.0)

W2002-07-30-16-36-13 - SPPMAG
 IRIG:1,UTC: 16:36:00.34 to 17:20:54.85, Dur: 2694s
 TimeLngth: 2694.51s, TimeInt: 29ms (33.6pps)
 TimeCor=-13.0s, DSPDif(mn,min,mx):29,28,145
 PPS(min,max,std): 30,35,1.47
 Prof: 344 to 90949, NumProf(t/r): 90605/24337
 ProcTime/Recs: 17:08:51-17:20:54/66268-90604
 MxACQtime: 26ms; DRate: 54.2KB/s; Flags: 0, 0, 0
 Pulse: 275ns, IFfilt: 5.0MHz; ppPol: VV
 TxPol: V, PRF: 20 kHz
 Range: Delay 75m, Spacing 30m, Gates 100
 Ave. Pulses: 520, Rng/Prof Aspect@90m/s: 11.2

	Min	Max	Mean	Std	Varc%
hhN(dB)	-70.81	-69.40	-70.08	-83.93	4.1
vvN(dB)	-67.04	-65.58	-66.22	-79.88	4.3
vvL(dB)	-10.92	-3.21	-4.94	-11.09	24.3
hvL(dB)	-70.81	-69.40	-70.05	-83.90	4.1
ppN(m/s)	-15.80	15.80	0.02	9.10	
ppT(m/s)	-0.01	0.01	-0.00	0.00	
hv/vv(dB)	-NaN	-42.11	-NaN	-52.64	-194
hnjmp(dB)	-1.08	0.72	-0.12	-12.74	5.5
vnjmp(dB)	-1.04	0.79	-0.15	-12.72	5.5