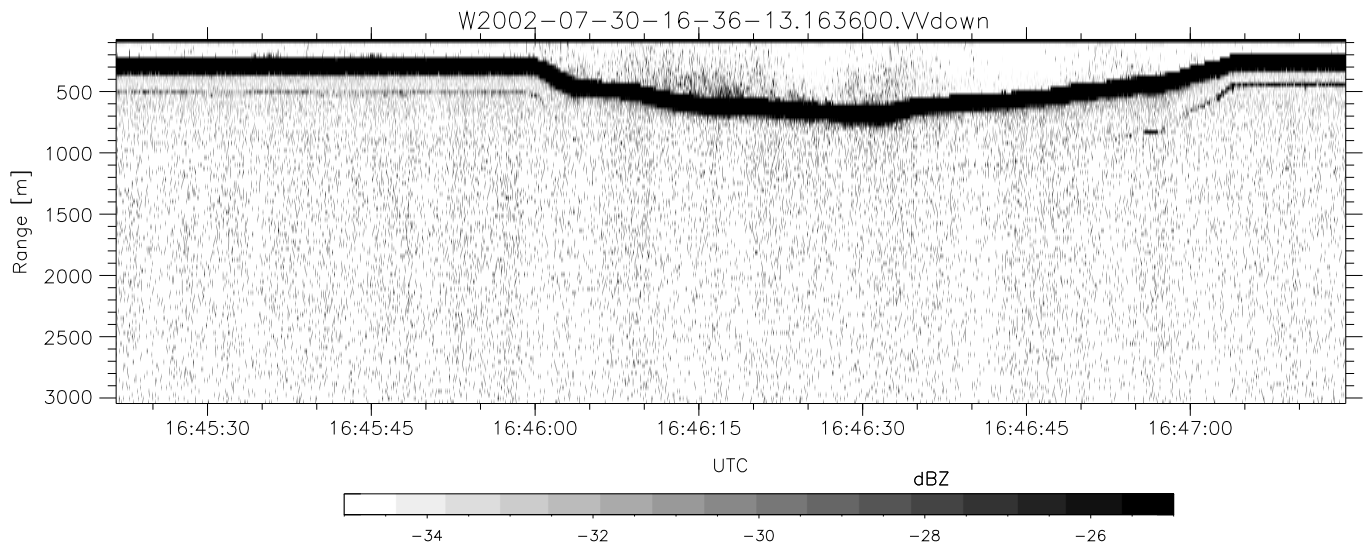
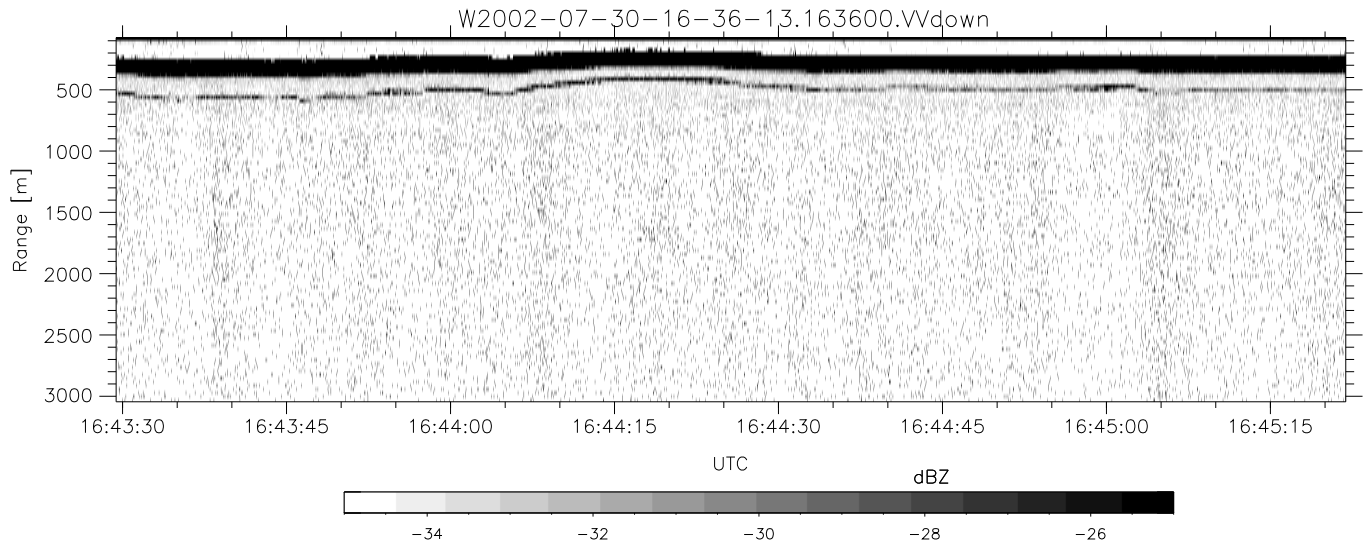
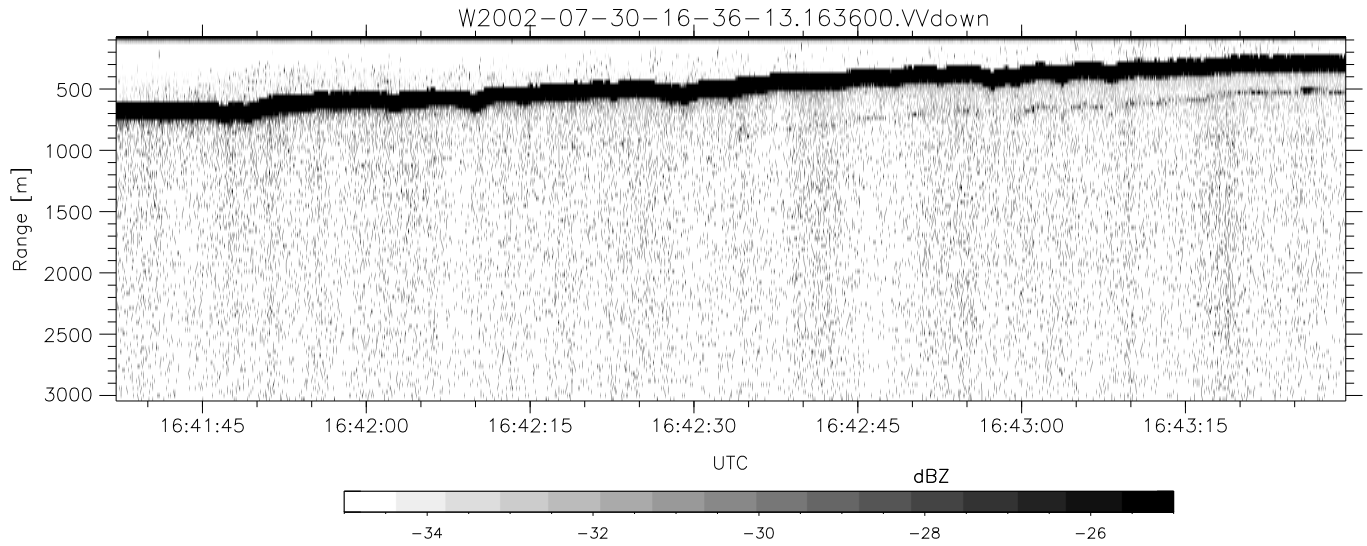


HiCu 2002 (dual-antenna config, modes 1,3,4,5,6,7) Data (cal: 55.0,50.0)

W2002-07-30-16-36-13 - SPPMAG  
 IRIG:1,UTC: 16:36:00.34 to 17:20:54.85, Dur: 2694s  
 TimeLngth: 2694.51s, TimeInt: 29ms (33.6pps)  
 TimeCor=-13.0s, DSPDif(mn,min,mx):29,28,343  
 PPS(min,max,std): 17,35,1.59  
 Prof: 344 to 90949, NumProf(t/r): 90605/33134  
 ProcTime/Recs: 16:36:00-16:52:25/0-33133  
 MxACQtime: 26ms; DRate: 54.2KB/s; Flags: 0, 0, 0  
 Pulse: 275ns, IFfilt: 5.0MHz; ppPol: VV  
 TxPol: V, PRF: 20 kHz  
 Range: Delay 75m, Spacing 30m, Gates 100  
 Ave. Pulses: 520, Rng/Prof Aspect@90m/s: 11.2

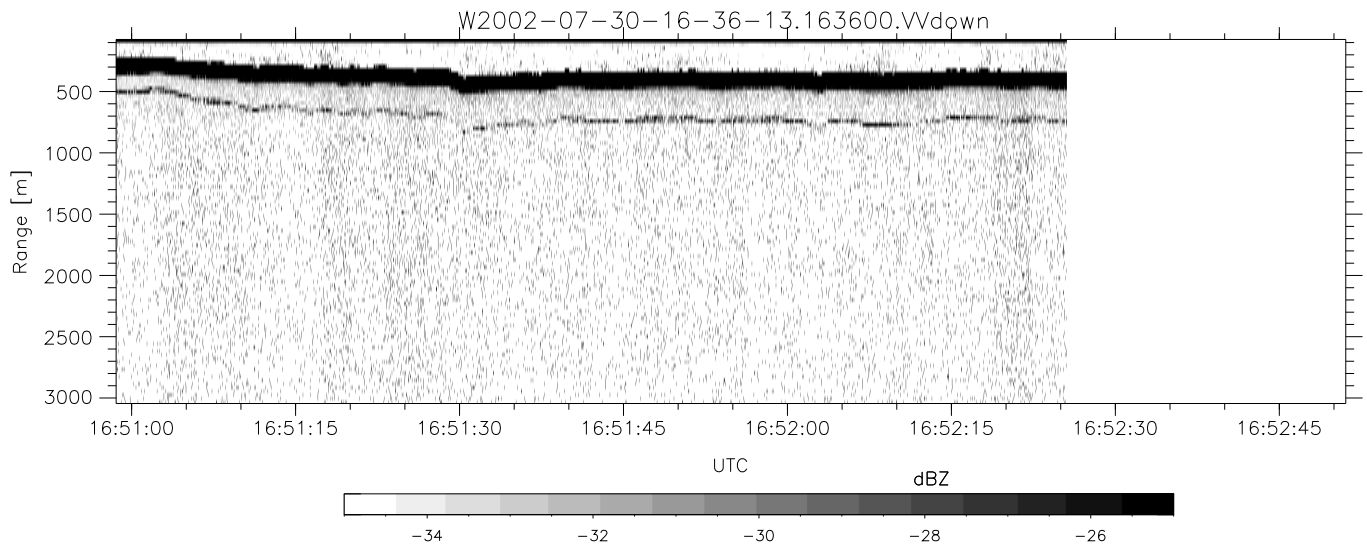
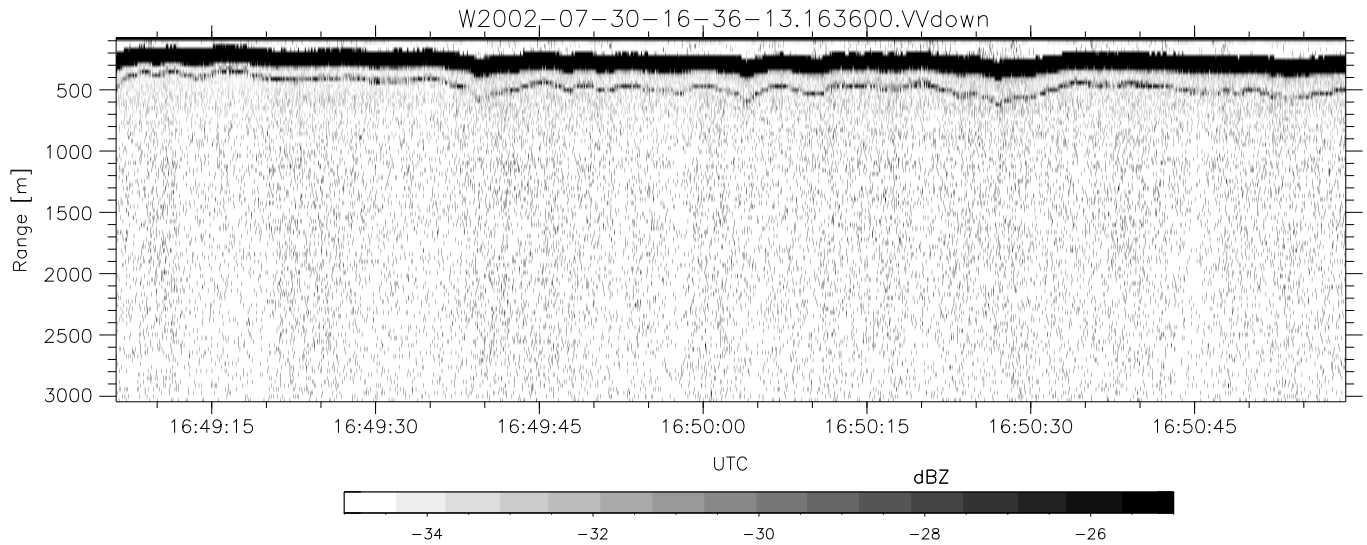
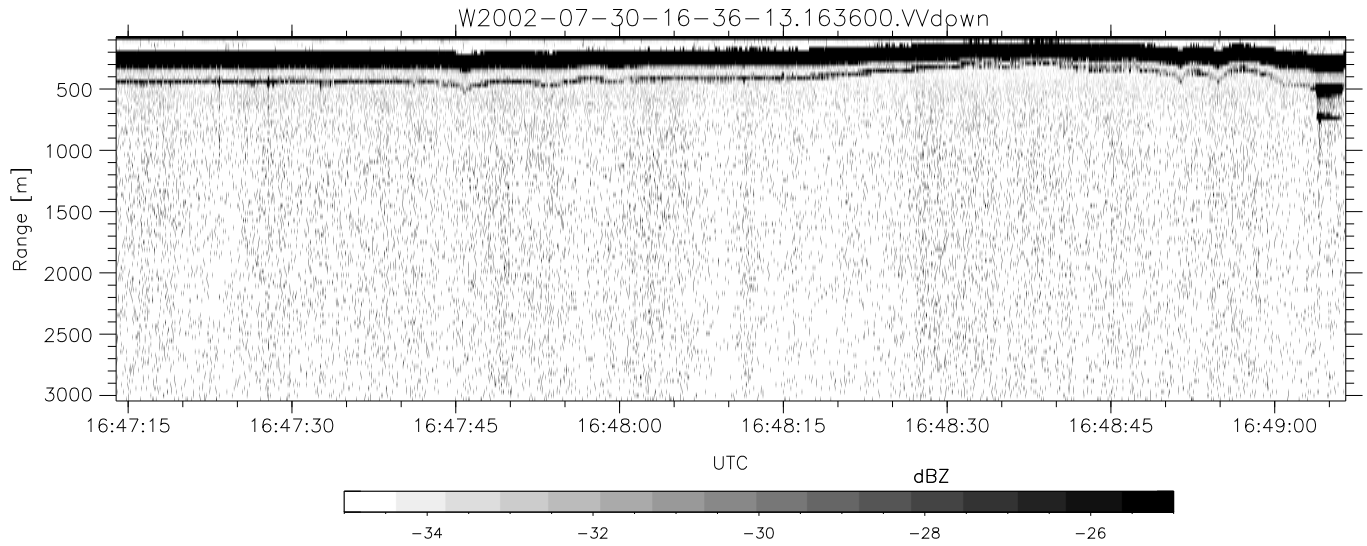
	Min	Max	Mean	Std	Varc%
hhN(dB)	-71.18	-69.61	-70.31	-83.80	4.5
vvN(dB)	-67.40	-65.70	-66.55	-79.66	4.9
vvL(dB)	-11.71	-2.61	-5.97	-9.70	42.4
hvL(dB)	-71.00	-69.54	-70.28	-83.78	4.5
ppN(m/s)	-15.80	15.80	0.03	9.11	
ppT(m/s)	-0.01	0.01	-0.00	0.00	
hv/vv(dB)	-NaN	-41.05	-65.15	-53.35	1512
hn_jmp(dB)	-0.99	0.82	-0.12	-12.77	5.4
vn_jmp(dB)	-1.11	0.77	-0.15	-12.65	5.6



HiCu 2002 (dual-antenna config, modes 1,3,4,5,6,7) Data (cal: 55.0,50.0)

W2002-07-30-16-36-13 - SPPMAG  
 IRIG:1,UTC: 16:36:00.34 to 17:20:54.85, Dur: 2694s  
 TimeLngth: 2694.51s, TimeInt: 29ms (33.6pps)  
 TimeCor=-13.0s, DSPDif(mn,min,mx):29,28,343  
 PPS(min,max,std): 17,35,1.59  
 Prof: 344 to 90949, NumProf(t/r): 90605/33134  
 ProcTime/Recs: 16:36:00-16:52:25/0-33133  
 MxACQtime: 26ms; DRate: 54.2KB/s; Flags: 0, 0, 0  
 Pulse: 275ns, IFfilt: 5.0MHz; ppPol: VV  
 TxPol: V, PRF: 20 kHz  
 Range: Delay 75m, Spacing 30m, Gates 100  
 Ave. Pulses: 520, Rng/Prof Aspect@90m/s: 11.2

	Min	Max	Mean	Std	Varc%
hhN(dB)	-71.18	-69.61	-70.31	-83.80	4.5
vvN(dB)	-67.40	-65.70	-66.55	-79.66	4.9
vvL(dB)	-11.71	-2.61	-5.97	-9.70	42.4
hvL(dB)	-71.00	-69.54	-70.28	-83.78	4.5
ppN(m/s)	-15.80	15.80	0.03	9.11	
ppT(m/s)	-0.01	0.01	-0.00	0.00	
hv/vv(dB)	-NaN	-41.05	-65.15	-53.35	1512
hnjmp(dB)	-0.99	0.82	-0.12	-12.77	5.4
vnjmp(dB)	-1.11	0.77	-0.15	-12.65	5.6



HiCu 2002 (dual-antenna config, modes 1,3,4,5,6,7) Data (cal: 55.0,50.0)

W2002-07-30-16-36-13 - SPPMAG  
 IRIG:1,UTC: 16:36:00.34 to 17:20:54.85, Dur: 2694s  
 TimeLngth: 2694.51s, TimeInt: 29ms (33.6pps)  
 TimeCor=-13.0s, DSPDif(mn,min,mx):29,28,343  
 PPS(min,max,std): 17,35,1.59  
 Prof: 344 to 90949, NumProf(t/r): 90605/33134  
 ProcTime/Recs: 16:36:00-16:52:25/0-33133  
 MxACQtime: 26ms; DRate: 54.2KB/s; Flags: 0, 0, 0  
 Pulse: 275ns, IFfilt: 5.0MHz; ppPol: VW  
 TxPol: V, PRF: 20 kHz  
 Range: Delay 75m, Spacing 30m, Gates 100  
 Ave. Pulses: 520, Rng/Prof Aspect@90m/s: 11.2

	Min	Max	Mean	Std	Varc%
hhN(dB)	-71.18	-69.61	-70.31	-83.80	4.5
vvN(dB)	-67.40	-65.70	-66.55	-79.66	4.9
vvL(dB)	-11.71	-2.61	-5.97	-9.70	42.4
hvL(dB)	-71.00	-69.54	-70.28	-83.78	4.5
ppN(m/s)	-15.80	15.80	0.03	9.11	
ppT(m/s)	-0.01	0.01	-0.00	0.00	
hv/vv(dB)	-NaN	-41.05	-65.15	-53.35	1512
hnjmp(dB)	-0.99	0.82	-0.12	-12.77	5.4
vnjmp(dB)	-1.11	0.77	-0.15	-12.65	5.6