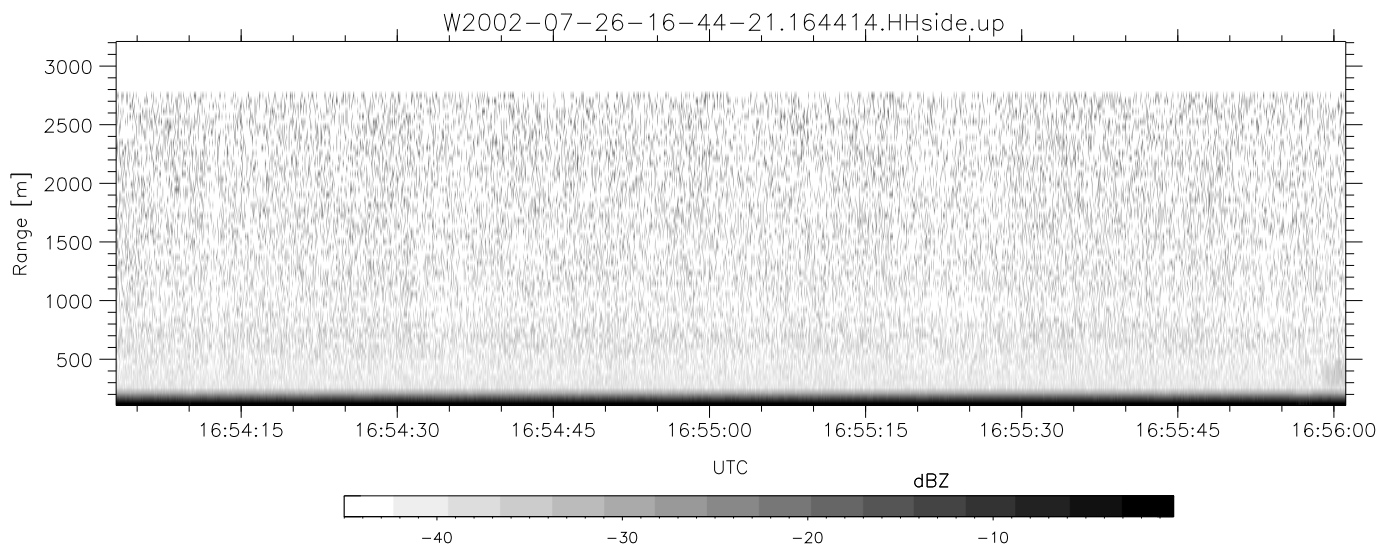
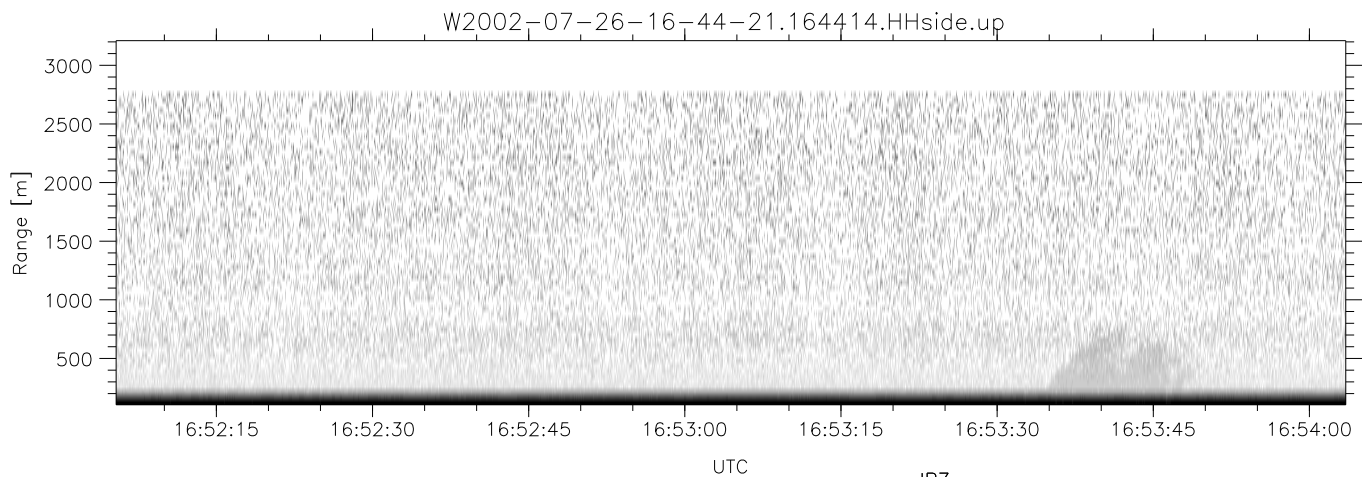
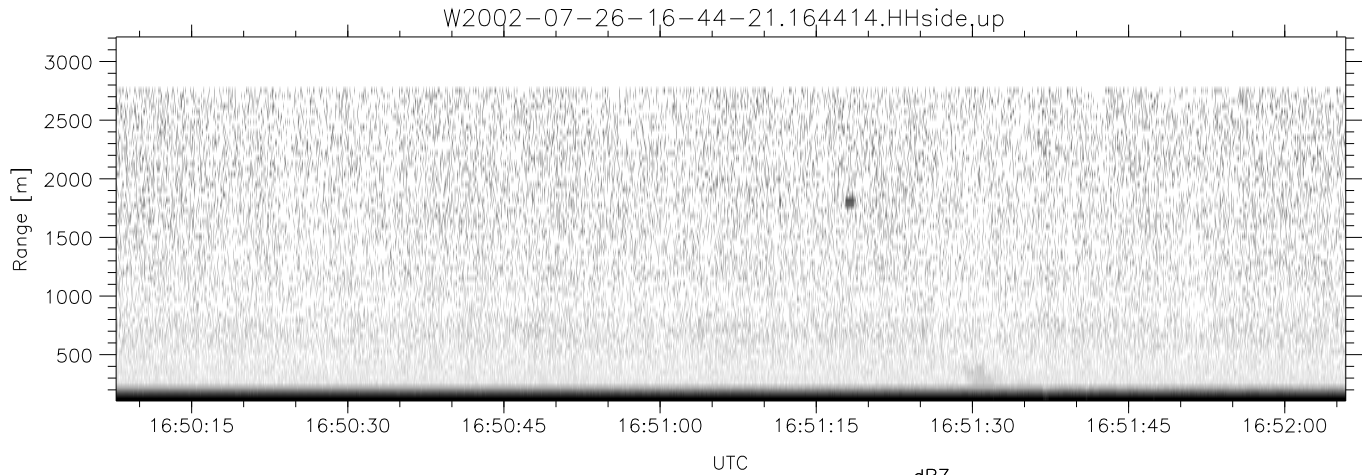


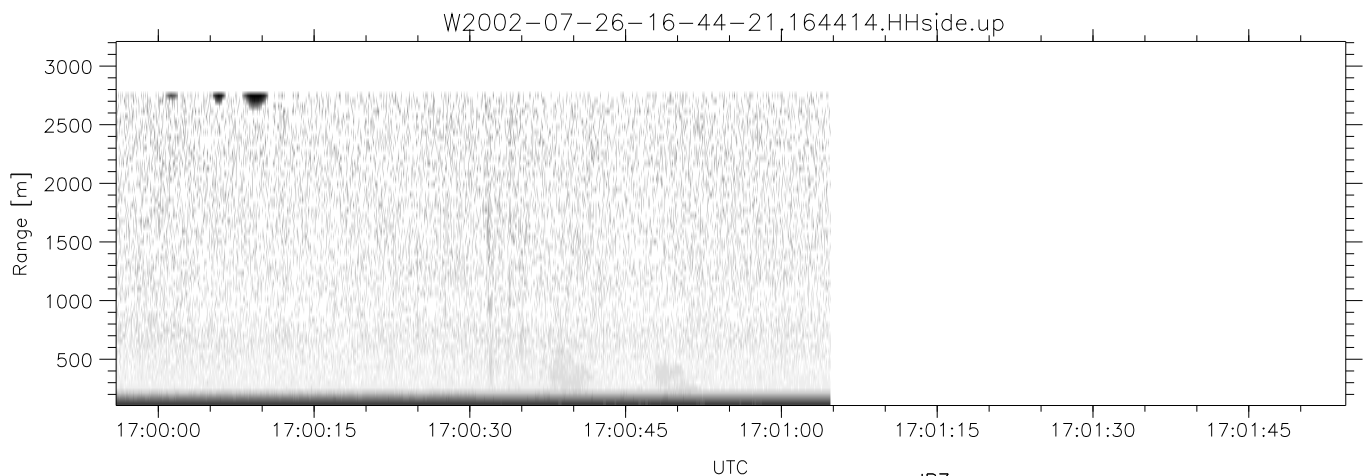
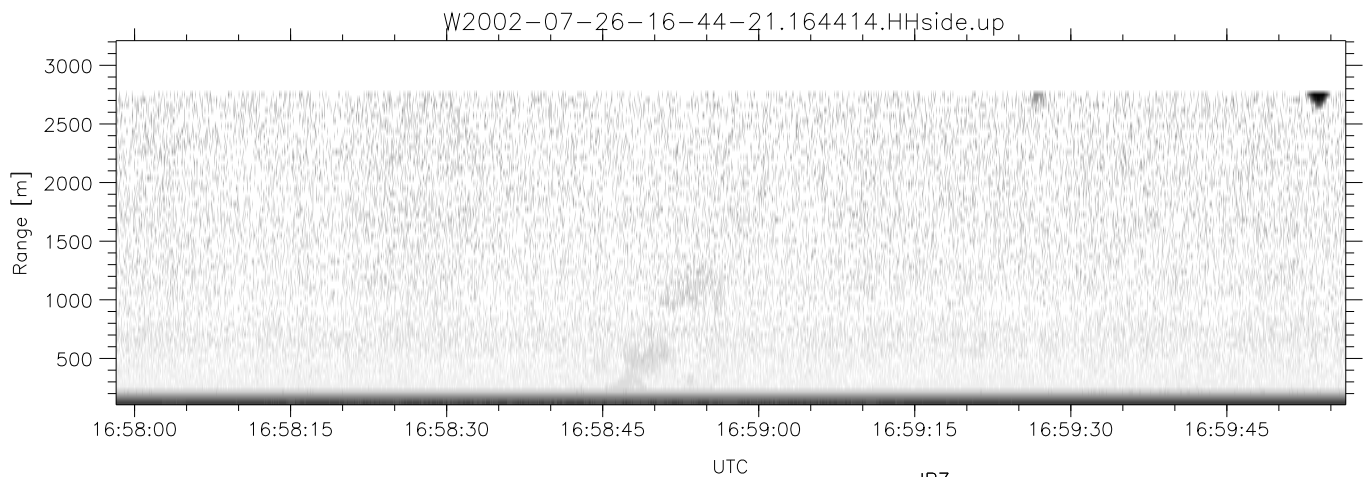
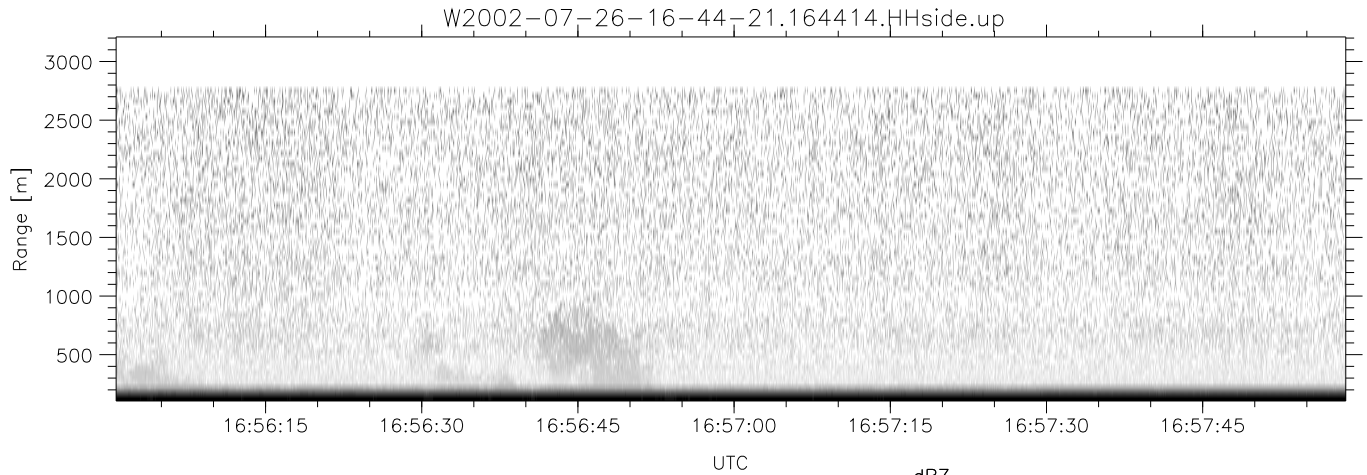
HiCu 2002 (dual-antenna config, modes 1,3,4,5,6,7) Data (cal: 49.0,50.0)

	Min	Max	Mean	Std	Varc%	
W2002-07-26-16-44-21 - PPMAG4						
IRIG:1,UTC: 16:44:14.78 to 17:01:04.69, Dur: 1010s						
TimeLngth: 1009.91s, TimeInt: 54ms (18.3pps)						
TimeCor=-13.0s, DSPDif(mn,min,mx):54,54,371						
PPS(min,max,std): 12,19,0.59						
Prof: 93 to 18581, NumProf(t/r): 18488/18488	hhN (dB)	-70.53	-69.42	-69.99	-84.83	3.3
MxACQtime: 51ms; DRate: 69.4KB/s; Flags: 0, 0, 0	vvN (dB)	-70.86	-69.77	-70.27	-84.79	3.5
Pulse: 575ns, IFfilt: 2.0MHz; ppPol: HH HV W	hhL (dB)	0.41	5.58	4.88	-6.28	7.6
TxPol: HHVV, PRF: 10 10 10 10 kHz	vvL (dB)	-17.78	-4.61	-6.75	-13.78	19.8
Range: Delay 105m, Spacing 45m, Gates 60	ppN (m/s)	-3.18	3.51	-0.01	0.92	
Ave. Pulses: 128, Rng/Prof Aspect@90m/s: 9.2	ppT (m/s)	-5.26	0.05	-1.55	2.19	
	hh/vv (dB)	-NaN	63.23	43.36	52.92	903.
	vh/hh (dB)	-32.34	-29.51	-30.39	-38.99	13.8
	hv/vv (dB)	-NaN	-25.74	-45.59	-44.68	123.
	hn_jmp (dB)	-0.51	0.73	0.13	-13.87	4.0
	vn_jmp (dB)	-0.60	0.78	0.16	-13.68	4.1



HiCu 2002 (dual-antenna config, modes 1,3,4,5,6,7) Data (cal: 49.0,50.0)

W2002-07-26-16-44-21 - PPMAG4	Min	Max	Mean	Std	Varc%	
IRIG:1,UTC: 16:44:14.78 to 17:01:04.69, Dur: 1010s	hhN (dB)	-70.53	-69.42	-69.99	-84.83	3.3
TimeLngth: 1009.91s, TimeInt: 54ms (18.3pps)	vvN (dB)	-70.86	-69.77	-70.27	-84.79	3.5
TimeCor=-13.0s, DSPDif(mn,min,mx):54,54,371	hhL (dB)	0.41	5.58	4.88	-6.28	7.6
PPS(min,max,std): 12,19,0.59	vvL (dB)	-17.78	-4.61	-6.75	-13.78	19.8
Prof: 93 to 18581, NumProf(t/r): 18488/18488	ppN (m/s)	-3.18	3.51	-0.01	0.92	
MxACQtime: 51ms; DRate: 69.4KB/s; Flags: 0, 0, 0	ppT (m/s)	-5.26	0.05	-1.55	2.19	
Pulse: 575ns, IFfilt: 2.0MHz; ppPol: HH HV W	hh/vv (dB)	-NaN	63.23	43.36	52.92	903.
TxPol: HHVV, PRF: 10 10 10 10 kHz	vh/hh (dB)	-32.34	-29.51	-30.39	-38.99	13.8
Range: Delay 105m, Spacing 45m, Gates 60	hv/vv (dB)	-NaN	-25.74	-45.59	-44.68	123.
Ave. Pulses: 128, Rng/Prof Aspect@90m/s: 9.2	hn/jmp (dB)	-0.51	0.73	0.13	-13.87	4.0
	vn/jmp (dB)	-0.60	0.78	0.16	-13.68	4.1



HiCu 2002 (dual-antenna config, modes 1,3,4,5,6,7) Data (cal: 49.0,50.0)

W2002-07-26-16-44-21 - PPMAG4	Min	Max	Mean	Std	Varc%	
IRIG:1,UTC: 16:44:14.78 to 17:01:04.69, Dur: 1010s	hhN(dB)	-70.53	-69.42	-69.99	-84.83	3.3
TimeLngth: 1009.91s, TimeInt: 54ms (18.3pps)	vvN(dB)	-70.86	-69.77	-70.27	-84.79	3.5
TimeCor=-13.0s, DSPDif(mn,min,mx):54,54,371	hhL(dB)	0.41	5.58	4.88	-6.28	7.6
PPS(min,max,std): 12,19,0.59	vvL(dB)	-17.78	-4.61	-6.75	-13.78	19.8
Prof: 93 to 18581, NumProf(t/r): 18488/18488	ppN(m/s)	-3.18	3.51	-0.01	0.92	
MxACQtime: 51ms; DRate: 69.4KB/s; Flags: 0, 0, 0	ppT(m/s)	-5.26	0.05	-1.55	2.19	
Pulse: 575ns, IFfilt: 2.0MHz; ppPol: HH HV W	hh/vv(dB)	-NaN	63.23	43.36	52.92	903.
TxPol: HHVV, PRF: 10 10 10 10 kHz	vh/hh(dB)	-32.34	-29.51	-30.39	-38.99	13.8
Range: Delay 105m, Spacing 45m, Gates 60	hv/vv(dB)	-NaN	-25.74	-45.59	-44.68	123.
Ave. Pulses: 128, Rng/Prof Aspect@90m/s: 9.2	hn_jmp(dB)	-0.51	0.73	0.13	-13.87	4.0
	vn_jmp(dB)	-0.60	0.78	0.16	-13.68	4.1