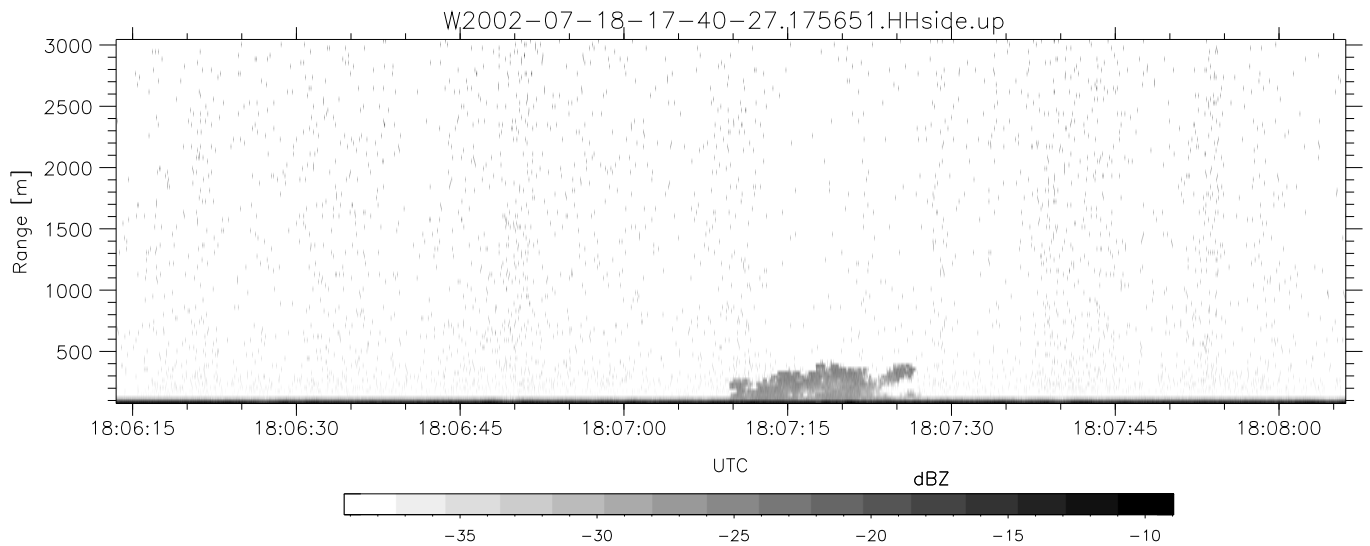
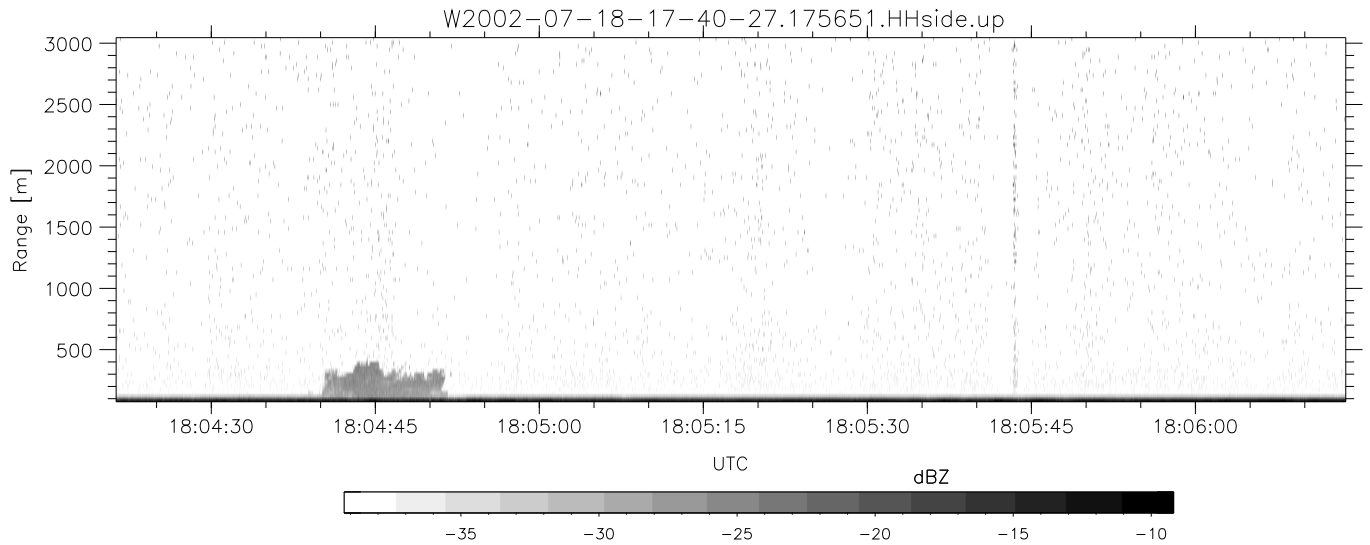
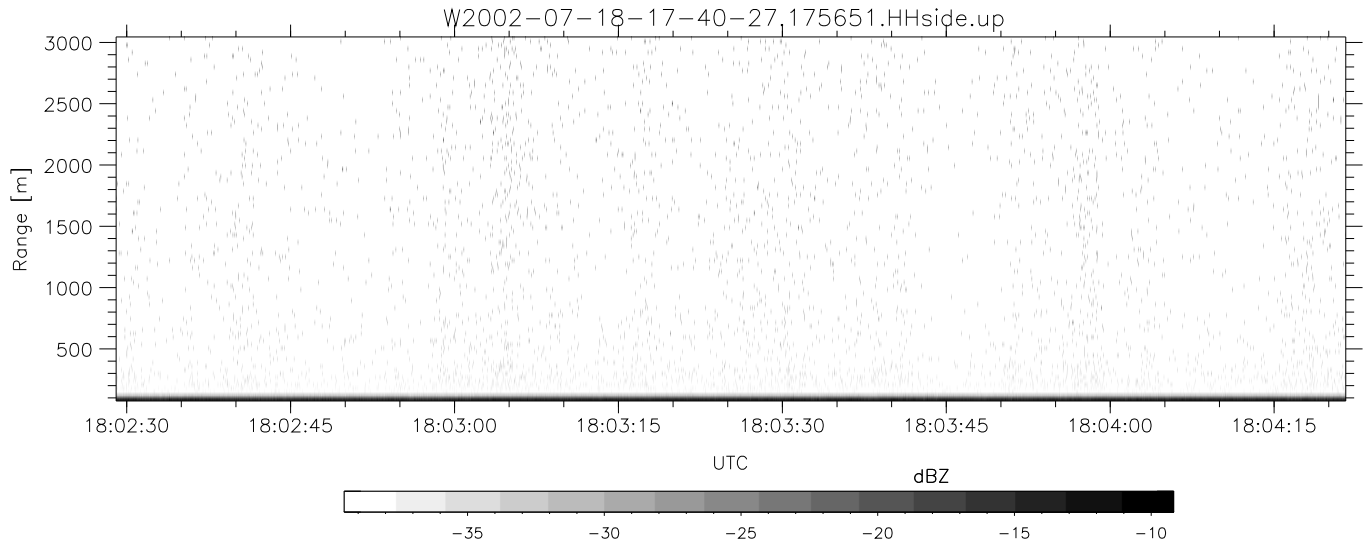


HiCu 2002 (dual-antenna config, modes 1,3,4,5,6,7) Data (cal: 49.0,50.0)

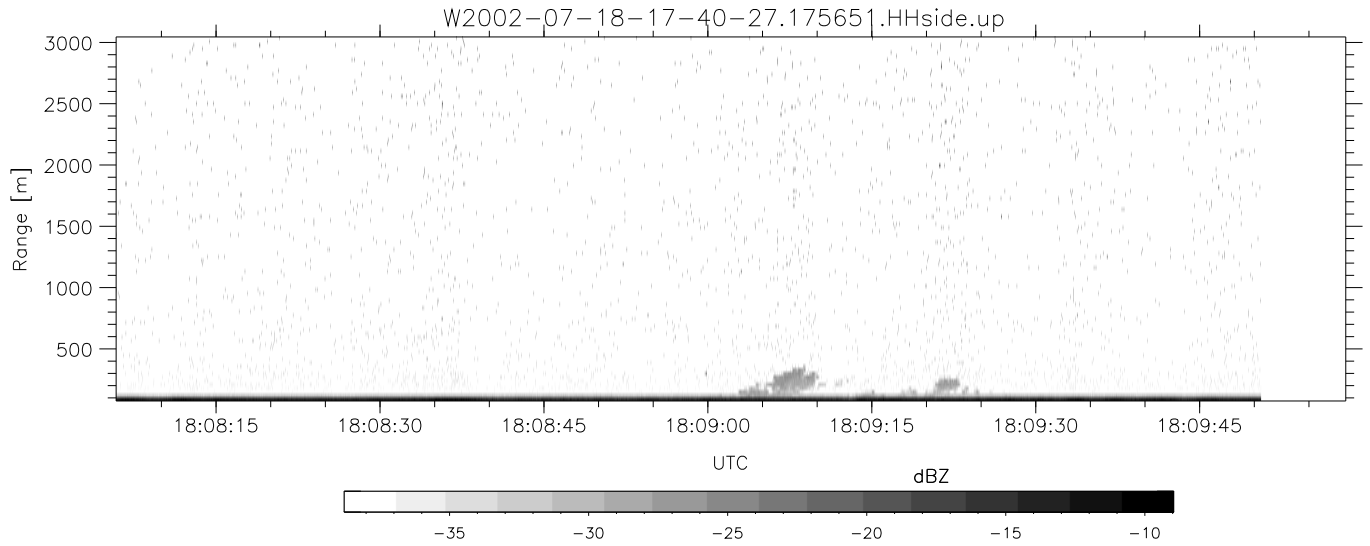
W2002-07-18-17-40-27 - PPMAG4	Min	Max	Mean	Std	Varc%	
IRIG:1,UTC: 17:40:25.66 to 18:09:50.60, Dur: 1765s	hhN(dB)	-64.90	-61.20	-62.93	-72.93	10.0
TimeLngth: 1764.94s, TimeInt: 29ms (33.6pps)	vvN(dB)	-67.84	-64.28	-65.95	-75.99	9.9
TimeCor=-13.0s, DSPDif(mn,min,mx):29,28,232	hhL(dB)	-13.02	0.53	-4.59	-8.03	45.2
PPS(min,max,std): 26,36,2.19	vvL(dB)	-18.69	-7.48	-13.86	-19.01	30.6
Prof: 4241 to 63520, NumProf(t/r): 59279/26145	ppN(m/s)	-12.78	12.64	0.03	4.14	
ProcTime/Recs: 17:56:51-18:09:50/33134-59278	ppT(m/s)	-100.9	99.89	0.27	32.71	
MxACQtime: 33ms; DRate: 188.0KB/s; Flags: 0, 0, 0	hh/vv(dB)	-NaN	37.80	10.01	25.10	3224
Pulse: 275ns, IFilt: 5.0MHz; ppPol: HH HV VV	vh/hh(dB)	-NaN	-29.23	-33.00	-35.59	55.0
TxPol: HHVV, PRF: 20 10 20 10 kHz	hv/vv(dB)	-NaN	-31.54	-46.03	-43.11	195.
Range: Delay 75m, Spacing 30m, Gates 100	hnjmp(dB)	-2.06	2.53	0.20	-8.37	13.9
Ave. Pulses: 84, Rng/Prof Aspect@90m/s: 11.2	vnjmp(dB)	-2.05	2.72	0.19	-8.39	13.9



HiCu 2002 (dual-antenna config, modes 1,3,4,5,6,7) Data (cal: 49.0,50.0)

W2002-07-18-17-40-27 - PPMAG4
 IRIG:1,UTC: 17:40:25.66 to 18:09:50.60, Dur: 1765s
 TimeLngth: 1764.94s, TimeInt: 29ms (33.6pps)
 TimeCor=-13.0s, DSPDif(mn,min,mx):29,28,232
 PPS(min,max,std): 26,36,2.19
 Prof: 4241 to 63520, NumProf(t/r): 59279/26145
 ProcTime/Recs: 17:56:51-18:09:50/33134-59278
 MxAcQtime: 33ms; DRate: 188.0KB/s; Flags: 0, 0, 0
 Pulse: 275ns, IFfilt: 5.0MHz; ppPol: HH HV VV
 TxPol: HHVV, PRF: 20 10 20 10 kHz
 Range: Delay 75m, Spacing 30m, Gates 100
 Ave. Pulses: 84, Rng/Prof Aspect@90m/s: 11.2

	Min	Max	Mean	Std	Varc%
hhN(dB)	-64.90	-61.20	-62.93	-72.93	10.0
vvN(dB)	-67.84	-64.28	-65.95	-75.99	9.9
hhL(dB)	-13.02	0.53	-4.59	-8.03	45.2
vvL(dB)	-18.69	-7.48	-13.86	-19.01	30.6
ppN(m/s)	-12.78	12.64	0.03	4.14	
ppT(m/s)	-100.9	99.89	0.27	32.71	
hh/vv(dB)	-NaN	37.80	10.01	25.10	3224
vh/hh(dB)	-NaN	-29.23	-33.00	-35.59	55.0
hv/vv(dB)	-NaN	-31.54	-46.03	-43.11	195.
hnjmp(dB)	-2.06	2.53	0.20	-8.37	13.9
vnjmp(dB)	-2.05	2.72	0.19	-8.39	13.9



HiCu 2002 (dual-antenna config, modes 1,3,4,5,6,7) Data (cal: 49.0,50.0)

W2002-07-18-17-40-27 - PPMAG4					
IRIG:1,UTC: 17:40:25.66 to 18:09:50.60, Dur: 1765s	hhN(dB)	Min	Max	Mean	Std
TimeLngth: 1764.94s, TimeInt: 29ms (33.6pps)	vvN(dB)	-64.90	-61.20	-62.93	-72.93
TimeCor=-13.0s, DSPDif(mn,min,mx):29,28,232	hhL(dB)	-67.84	-64.28	-65.95	-75.99
PPS(min,max,std): 26,36,2.19	vvL(dB)	-13.02	0.53	-4.59	-8.03
Prof: 4241 to 63520, NumProf(t/r): 59279/26145	ppN(m/s)	-18.69	-7.48	-13.86	-19.01
ProcTime/Recs: 17:56:51-18:09:50/33134-59278	ppT(m/s)	-12.78	12.64	0.03	4.14
MxACQtime: 33ms; DRate: 188.0KB/s; Flags: 0, 0, 0	hh/vv(dB)	-100.9	99.89	0.27	32.71
Pulse: 275ns, IFilt: 5.0MHz; ppPol: HH HV VV	vh/hh(dB)	-NaN	37.80	10.01	25.10
TxPol: HHVV, PRF: 20 10 20 10 kHz	hv/vv(dB)	-NaN	-29.23	-33.00	-35.59
Range: Delay 75m, Spacing 30m, Gates 100	hn/vv(dB)	-NaN	-31.54	-46.03	-43.11
Ave. Pulses: 84, Rng/Prof Aspect@90m/s: 11.2	hn/jmp(dB)	-2.06	2.53	0.20	-8.37
	vn/jmp(dB)	-2.05	2.72	0.19	-8.39
					13.9
					13.9