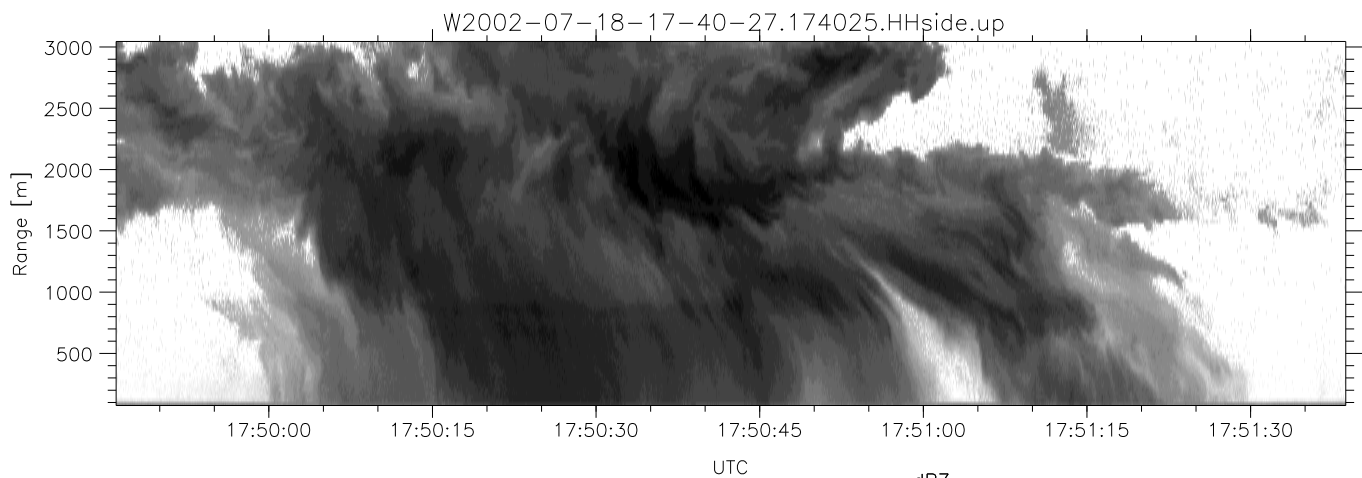
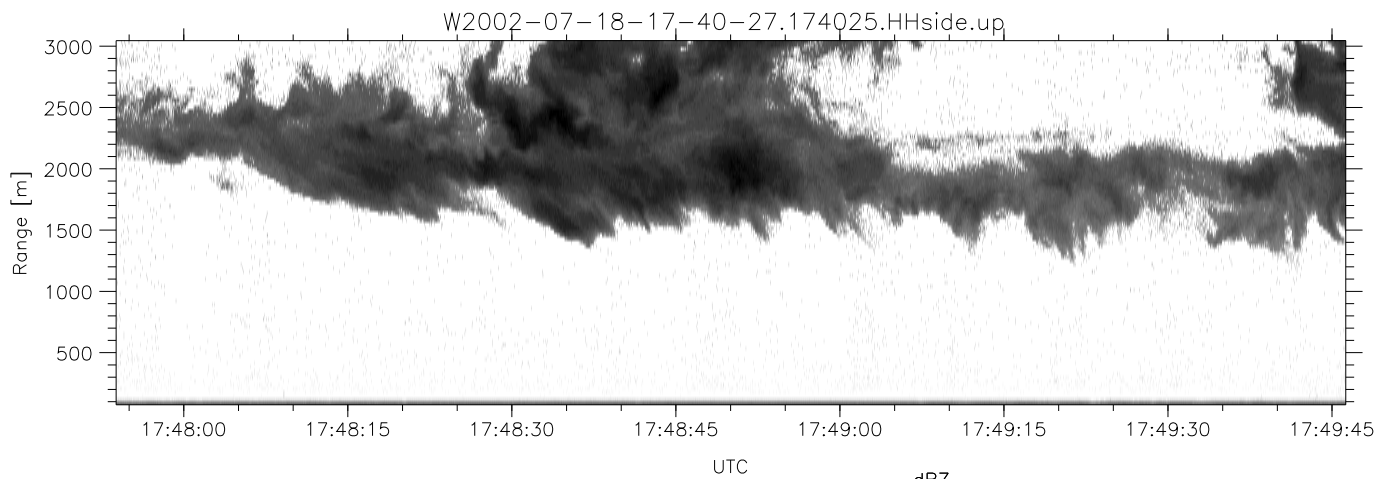
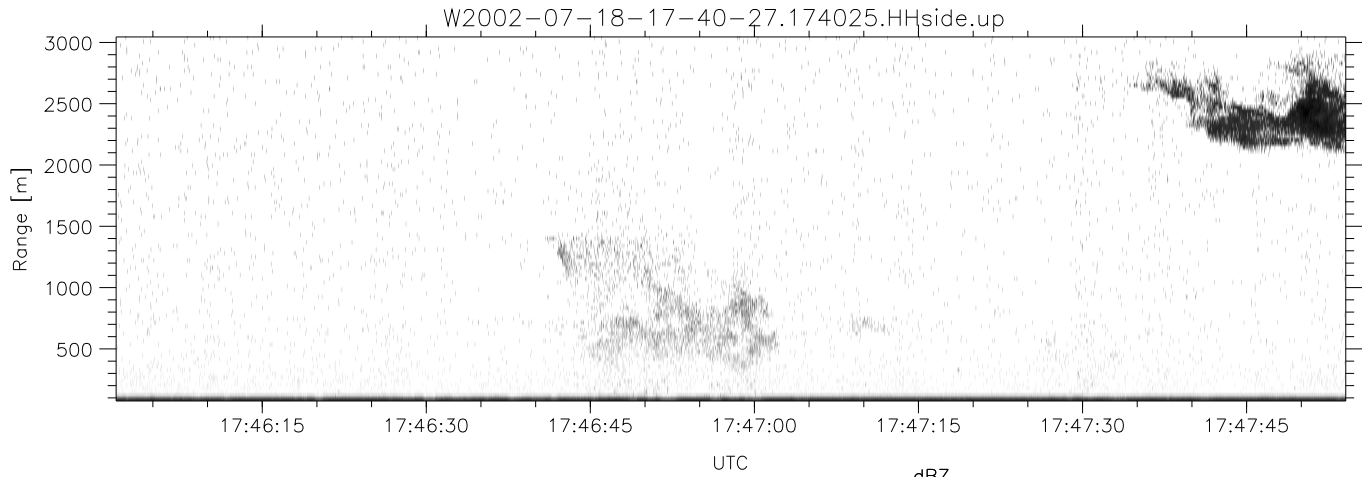


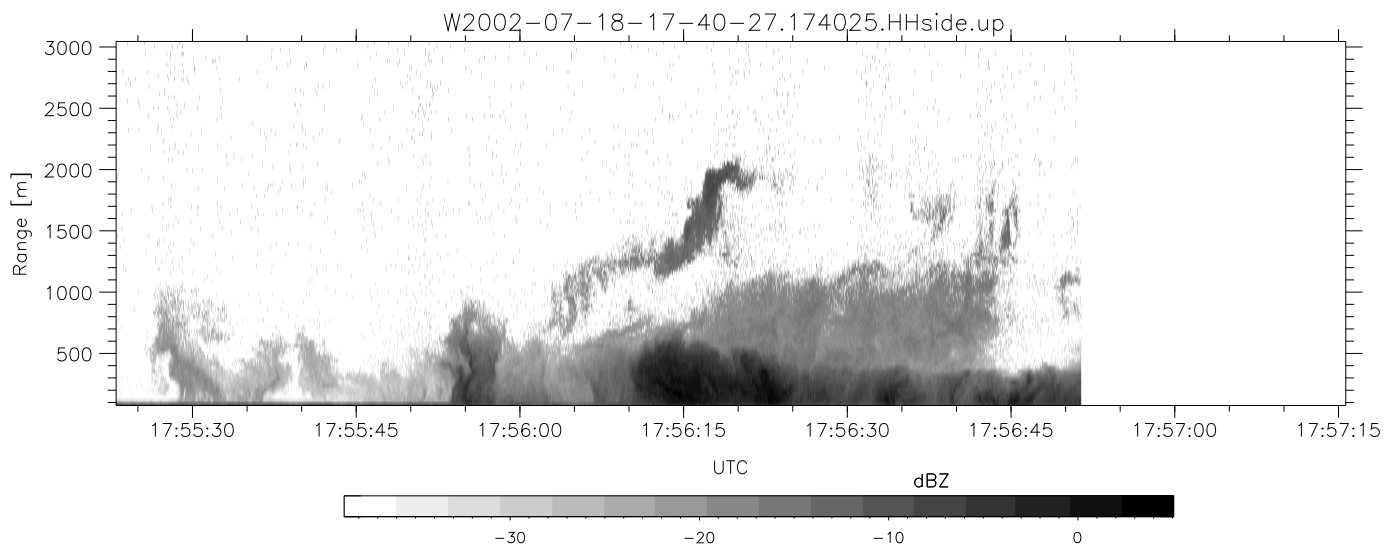
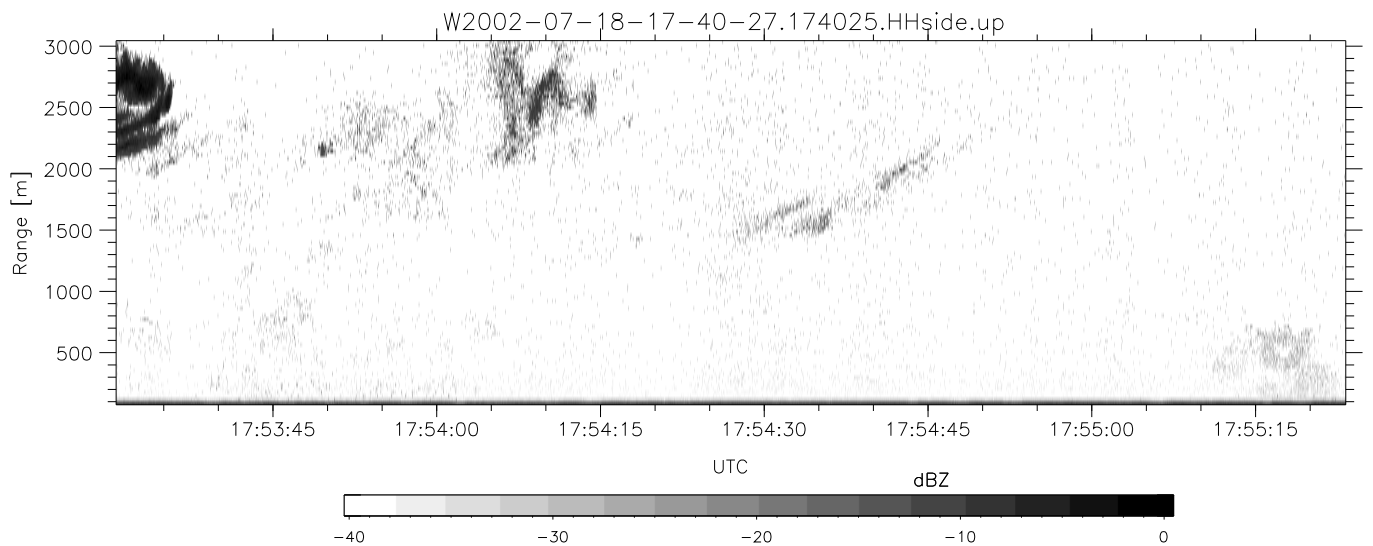
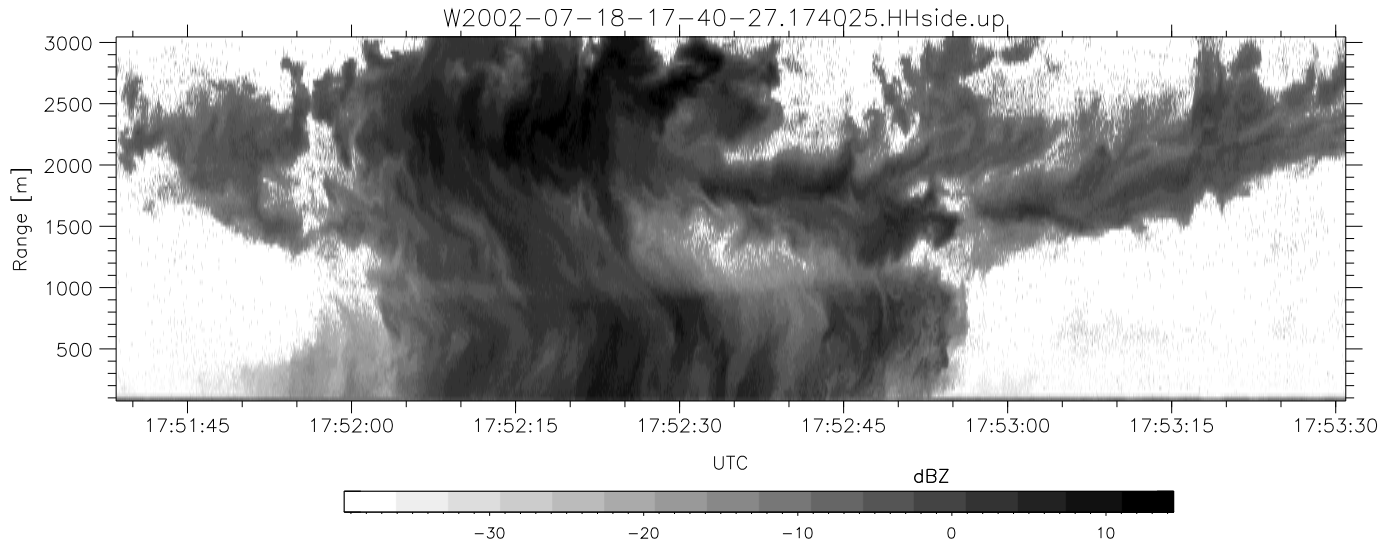
HiCu 2002 (dual-antenna config, modes 1,3,4,5,6,7) Data (cal: 49.0,50.0)

	Min	Max	Mean	Std	Varc%	
W2002-07-18-17-40-27 - PPMAG4						
IRIG:1,UTC: 17:40:25.66 to 18:09:50.60, Dur: 1765s	hhN (dB)	-64.86	-61.34	-62.88	-72.83	10.1
TimeLngth: 1764.94s, TimeInt: 29ms (33.6pps)	vvN (dB)	-67.90	-64.29	-65.95	-75.95	10.0
TimeCor=-13.0s, DSPDif(mn,min,mx):29,28,802	hhL (dB)	-12.20	0.84	-1.94	-7.59	27.2
PPS(min,max,std): 13,36,2.27	vvL (dB)	-16.96	-7.25	-11.01	-14.99	40.0
Prof: 4241 to 63520, NumProf(t/r): 59279/33134	ppN (m/s)	-12.46	12.83	0.00	4.15	
ProcTime/Recs: 17:40:25-17:56:51/0-33133	ppT (m/s)	-98.47	101.39	0.04	32.81	
MxACQtime: 33ms; DRate: 188.0KB/s; Flags: 0, 0, 0	hh/vv (dB)	-NaN	78.87	29.07	52.89	2405
Pulse: 275ns, IFfilt: 5.0MHz; ppPol: HH HV VV	vh/hh (dB)	-NaN	-18.57	-39.99	-35.70	269.
TxPol: HHVV, PRF: 20 10 20 10 kHz	hv/vv (dB)	-NaN	-30.03	-42.33	-39.81	178.
Range: Delay 75m, Spacing 30m, Gates 100	hn_jmp (dB)	-2.05	2.37	0.18	-8.35	14.0
Ave. Pulses: 84, Rng/Prof Aspect@90m/s: 11.2	vn_jmp (dB)	-2.23	2.53	0.18	-8.36	14.0



HiCu 2002 (dual-antenna config, modes 1,3,4,5,6,7) Data (cal: 49.0,50.0)

	Min	Max	Mean	Std	Varc%	
W2002-07-18-17-40-27 - PPMAG4						
IRIG:1,UTC: 17:40:25.66 to 18:09:50.60, Dur: 1765s	hhN (dB)	-64.86	-61.34	-62.88	-72.83	10.1
TimeLngth: 1764.94s, TimeInt: 29ms (33.6pps)	vvN (dB)	-67.90	-64.29	-65.95	-75.95	10.0
TimeCor=-13.0s, DSPDif(mn,min,mx):29,28,802	hhL (dB)	-12.20	0.84	-1.94	-7.59	27.2
PPS(min,max,std): 13,36,2.27	vvL (dB)	-16.96	-7.25	-11.01	-14.99	40.0
Prof: 4241 to 63520, NumProf(t/r): 59279/33134	ppN (m/s)	-12.46	12.83	0.00	4.15	
ProcTime/Recs: 17:40:25-17:56:51/0-33133	ppT (m/s)	-98.47	101.39	0.04	32.81	
MxACQtime: 33ms; DRate: 188.0KB/s; Flags: 0, 0, 0	hh/vv (dB)	-NaN	78.87	29.07	52.89	2405
Pulse: 275ns, IFilt: 5.0MHz; ppPol: HH HV VV	vh/hh (dB)	-NaN	-18.57	-39.99	-35.70	269.
TxPol: HHVV, PRF: 20 10 20 10 kHz	hv/vv (dB)	-NaN	-30.03	-42.33	-39.81	178.
Range: Delay 75m, Spacing 30m, Gates 100	hn_jmp (dB)	-2.05	2.37	0.18	-8.35	14.0
Ave. Pulses: 84, Rng/Prof Aspect@90m/s: 11.2	vn_jmp (dB)	-2.23	2.53	0.18	-8.36	14.0



HiCu 2002 (dual-antenna config, modes 1,3,4,5,6,7) Data (cal: 49.0,50.0)

W2002-07-18-17-40-27 - PPMAG4
 IRIG:1,UTC: 17:40:25.66 to 18:09:50.60, Dur: 1765s
 TimeLngth: 1764.94s, TimeInt: 29ms (33.6pps)
 TimeCor=-13.0s, DSPDif(mn,min,mx):29,28,802
 PPS(min,max,std): 13,36,2.27
 Prof: 4241 to 63520, NumProf(t/r): 59279/33134
 ProcTime/Recs: 17:40:25-17:56:51/0-33133
 MxACQtime: 33ms; DRate: 188.0KB/s; Flags: 0, 0, 0
 Pulse: 275ns, IFfilt: 5.0MHz; ppPol: HH HV VV
 TxPol: HHVV, PRF: 20 10 20 10 kHz
 Range: Delay 75m, Spacing 30m, Gates 100
 Ave. Pulses: 84, Rng/Prof Aspect@90m/s: 11.2

	Min	Max	Mean	Std	Varc%
hhN(dB)	-64.86	-61.34	-62.88	-72.83	10.1
vvN(dB)	-67.90	-64.29	-65.95	-75.95	10.0
hhL(dB)	-12.20	0.84	-1.94	-7.59	27.2
vvL(dB)	-16.96	-7.25	-11.01	-14.99	40.0
ppN(m/s)	-12.46	12.83	0.00	4.15	
ppT(m/s)	-98.47	101.39	0.04	32.81	
hh/vv(dB)	-NaN	78.87	29.07	52.89	2405
vh/hh(dB)	-NaN	-18.57	-39.99	-35.70	269.
hv/vv(dB)	-NaN	-30.03	-42.33	-39.81	178.
hnjmp(dB)	-2.05	2.37	0.18	-8.35	14.0
vnjmp(dB)	-2.23	2.53	0.18	-8.36	14.0