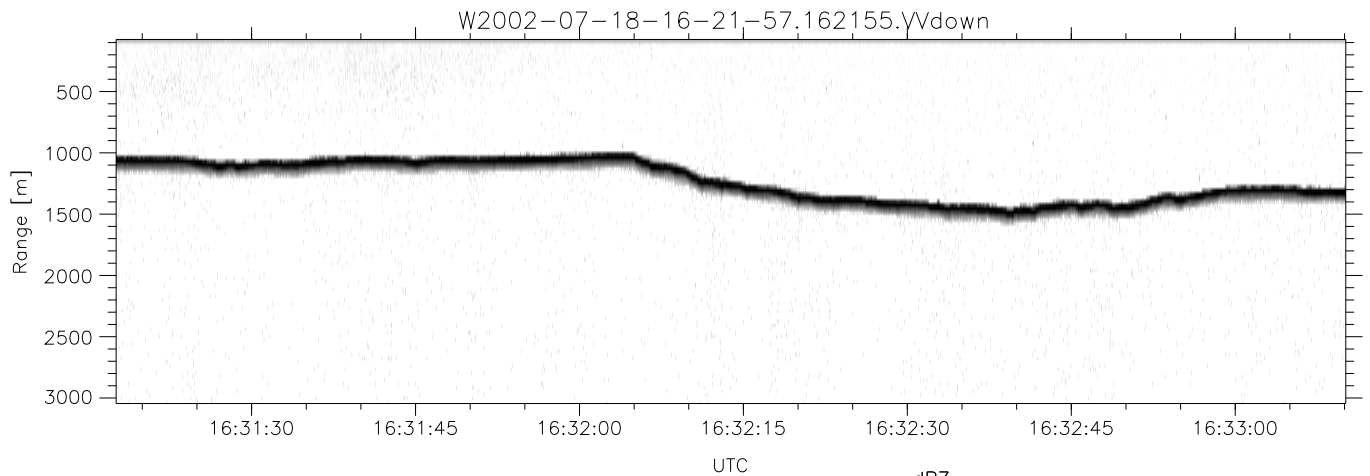
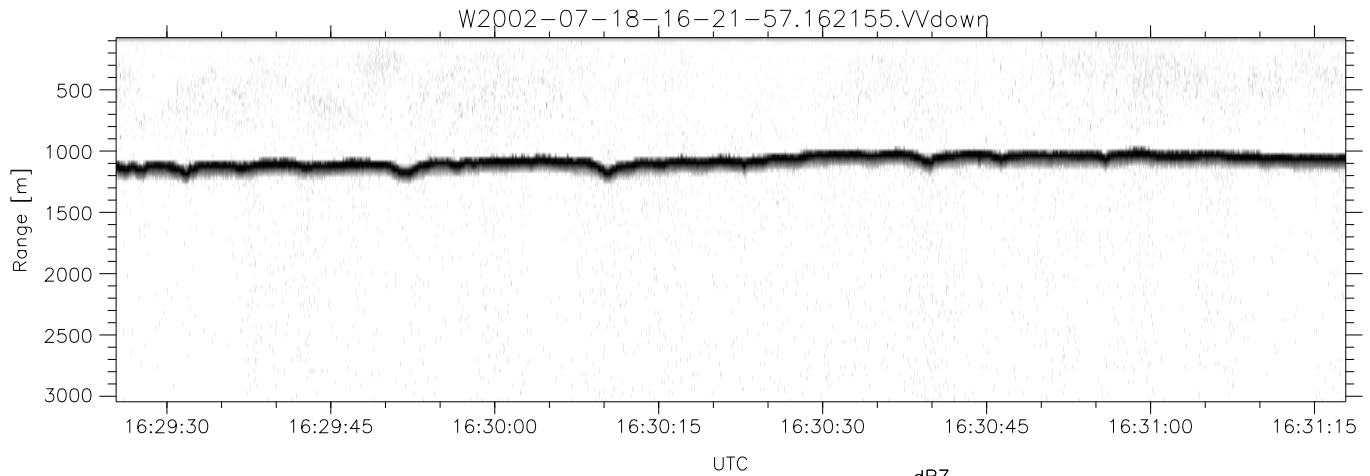
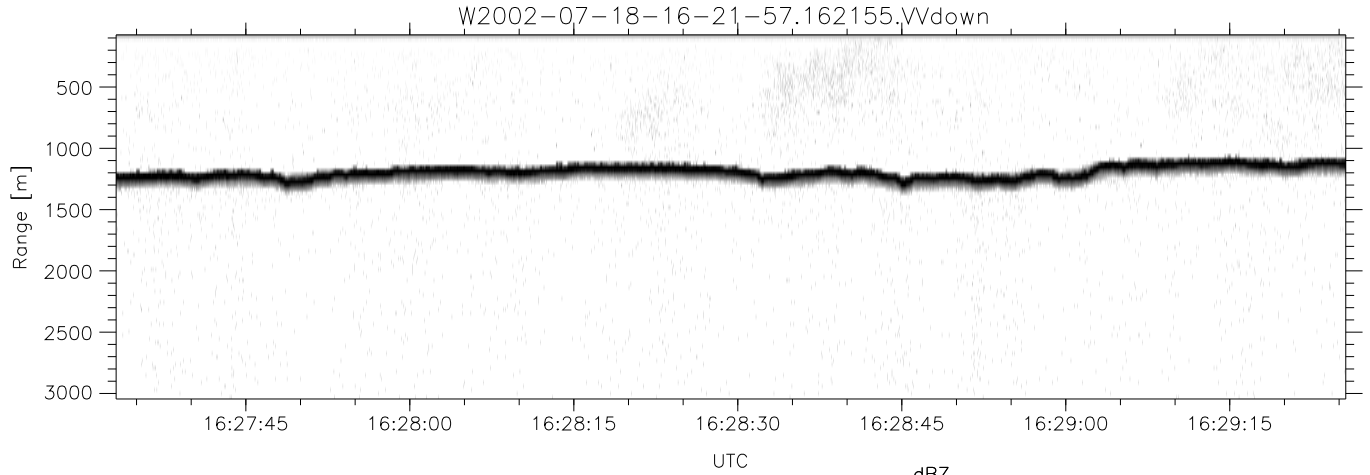


HiCu 2002 (dual-antenna config, modes 1,3,4,5,6,7) Data (cal: 49.0,50.0)

W2002-07-18-16-21-57 - PPMAG4  
 IRIG:1,UTC: 16:21:55.58 to 16:53:08.86, Dur: 1873s  
 TimeLngth: 1873.28s, TimeInt: 29ms (34.1pps)  
 TimeCor=-13.0s, DSPDif(mn,min,mx):29,28,368  
 PPS(min,max,std): 17,36,2.18  
 Prof: 3973 to 67788, NumProf(t/r): 63815/34138  
 ProcTime/Recs: 16:21:55-16:38:38/0-34137  
 MxACQtime: 33ms; DRate: 190.7KB/s; Flags: 0, 0, 0  
 Pulse: 275ns, IFfilt: 5.0MHz; ppPol: HH HV VV  
 TxPol: HHVV, PRF: 20 10 20 10 kHz  
 Range: Delay 75m, Spacing 30m, Gates 100  
 Ave. Pulses: 84, Rng/Prof Aspect@90m/s: 11.4

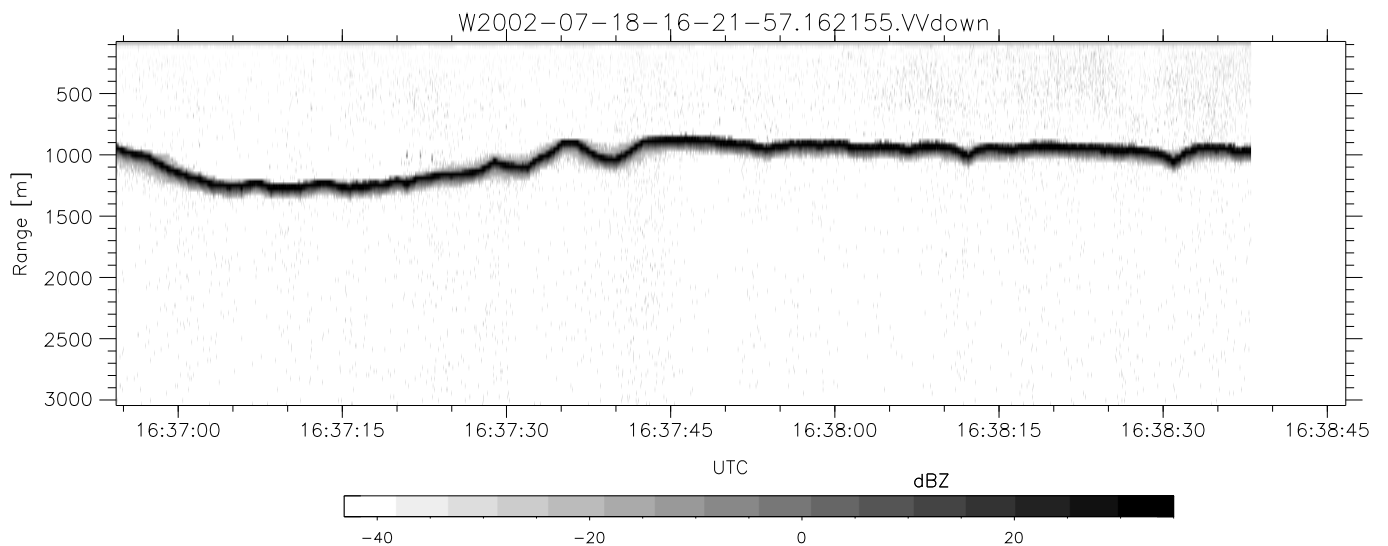
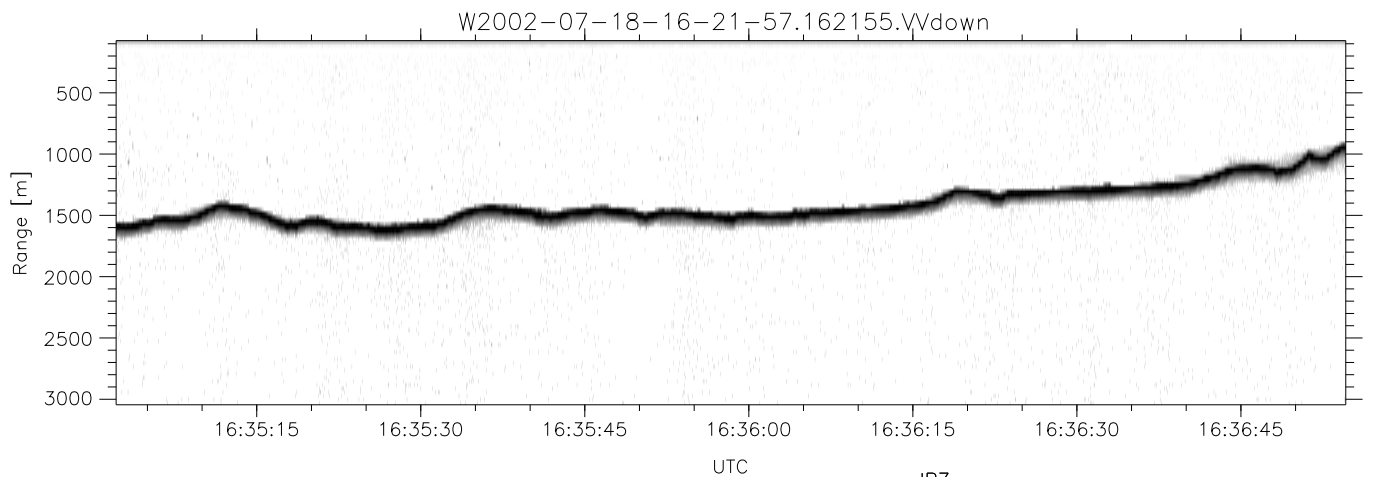
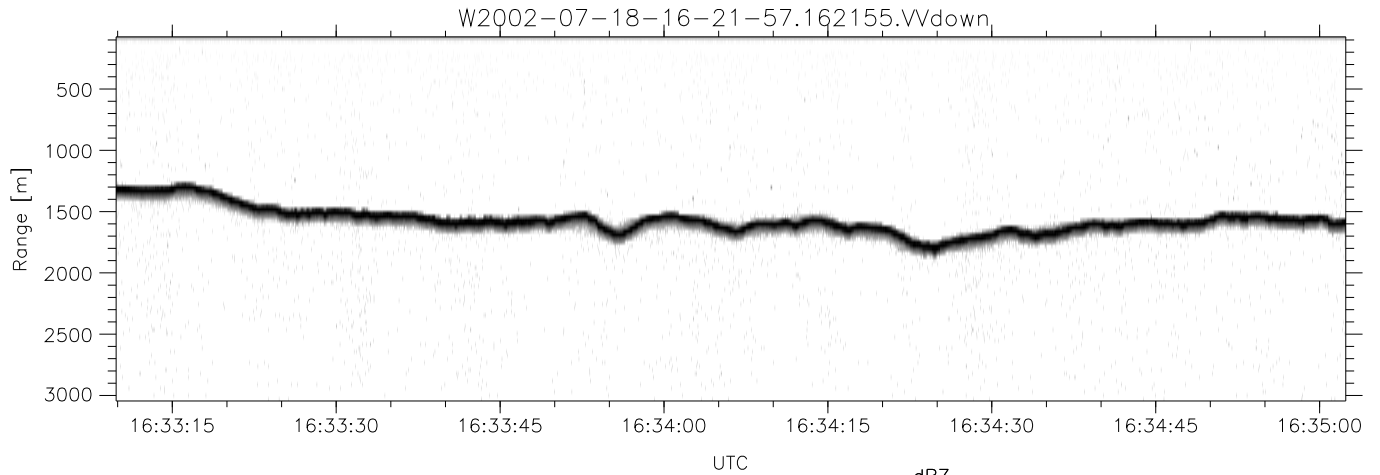
	Min	Max	Mean	Std	Varc%
hhN(dB)	-65.63	-61.97	-63.75	-73.74	10.0
vvN(dB)	-68.82	-65.17	-66.88	-76.77	10.3
hhL(dB)	-13.02	-0.55	-3.18	-9.33	24.3
vvL(dB)	-14.89	-8.37	-10.15	-18.70	13.9
ppN(m/s)	-12.20	12.43	-0.00	4.17	
ppT(m/s)	-96.38	98.23	-0.03	32.95	
hh/vv(dB)	-NaN	32.24	23.42	25.36	156.
vh/hh(dB)	-99.00	-99.00	-99.00	-99.00	-99.
hv/vv(dB)	-NaN	-32.80	-45.89	-43.96	155.
hnjmp(dB)	-2.11	2.68	0.20	-8.39	13.9
vnjmp(dB)	-2.14	2.79	0.20	-8.32	14.1



HiCu 2002 (dual-antenna config, modes 1,3,4,5,6,7) Data (cal: 49.0,50.0)

W2002-07-18-16-21-57 - PPMAG4  
 IRIG:1,UTC: 16:21:55.58 to 16:53:08.86, Dur: 1873s  
 TimeLngth: 1873.28s, TimeInt: 29ms (34.1pps)  
 TimeCor=-13.0s, DSPDif(mn,min,mx):29,28,368  
 PPS(min,max,std): 17,36,2.18  
 Prof: 3973 to 67788, NumProf(t/r): 63815/34138  
 ProcTime/Recs: 16:21:55-16:38:38/0-34137  
 MxACQtime: 33ms; DRate: 190.7KB/s; Flags: 0, 0, 0  
 Pulse: 275ns, IFfilt: 5.0MHz; ppPol: HH HV VV  
 TxPol: HHVV, PRF: 20 10 20 10 kHz  
 Range: Delay 75m, Spacing 30m, Gates 100  
 Ave. Pulses: 84, Rng/Prof Aspect@90m/s: 11.4

	Min	Max	Mean	Std	Varc%
hhN(dB)	-65.63	-61.97	-63.75	-73.74	10.0
vvN(dB)	-68.82	-65.17	-66.88	-76.77	10.3
hhL(dB)	-13.02	-0.55	-3.18	-9.33	24.3
vvL(dB)	-14.89	-8.37	-10.15	-18.70	13.9
ppN(m/s)	-12.20	12.43	-0.00	4.17	
ppT(m/s)	-96.38	98.23	-0.03	32.95	
hh/vv(dB)	-NaN	32.24	23.42	25.36	156.
vh/hh(dB)	-99.00	-99.00	-99.00	-99.00	-99.
hv/vv(dB)	-NaN	-32.80	-45.89	-43.96	155.
hnjmp(dB)	-2.11	2.68	0.20	-8.39	13.9
vnjmp(dB)	-2.14	2.79	0.20	-8.32	14.1



HiCu 2002 (dual-antenna config, modes 1,3,4,5,6,7) Data (cal: 49.0,50.0)

W2002-07-18-16-21-57 - PPMAG4  
 IRIG:1,UTC: 16:21:55.58 to 16:53:08.86, Dur: 1873s  
 TimeLngth: 1873.28s, TimeInt: 29ms (34.1pps)  
 TimeCor=-13.0s, DSPDif(mn,min,mx):29,28,368  
 PPS(min,max,std): 17,36,2.18  
 Prof: 3973 to 67788, NumProf(t/r): 63815/34138  
 ProcTime/Recs: 16:21:55-16:38:38/0-34137  
 MxACQtime: 33ms; DRate: 190.7KB/s; Flags: 0, 0, 0  
 Pulse: 275ns, IFfilt: 5.0MHz; ppPol: HH HV VV  
 TxPol: HHVV, PRF: 20 10 20 10 kHz  
 Range: Delay 75m, Spacing 30m, Gates 100  
 Ave. Pulses: 84, Rng/Prof Aspect@90m/s: 11.4

	Min	Max	Mean	Std	Varc%
hhN(dB)	-65.63	-61.97	-63.75	-73.74	10.0
vvN(dB)	-68.82	-65.17	-66.88	-76.77	10.3
hhL(dB)	-13.02	-0.55	-3.18	-9.33	24.3
vvL(dB)	-14.89	-8.37	-10.15	-18.70	13.9
ppN(m/s)	-12.20	12.43	-0.00	4.17	
ppT(m/s)	-96.38	98.23	-0.03	32.95	
hh/vv(dB)	-NaN	32.24	23.42	25.36	156.
vh/hh(dB)	-99.00	-99.00	-99.00	-99.00	-99.
hv/vv(dB)	-NaN	-32.80	-45.89	-43.96	155.
hnjmp(dB)	-2.11	2.68	0.20	-8.39	13.9
vnjmp(dB)	-2.14	2.79	0.20	-8.32	14.1