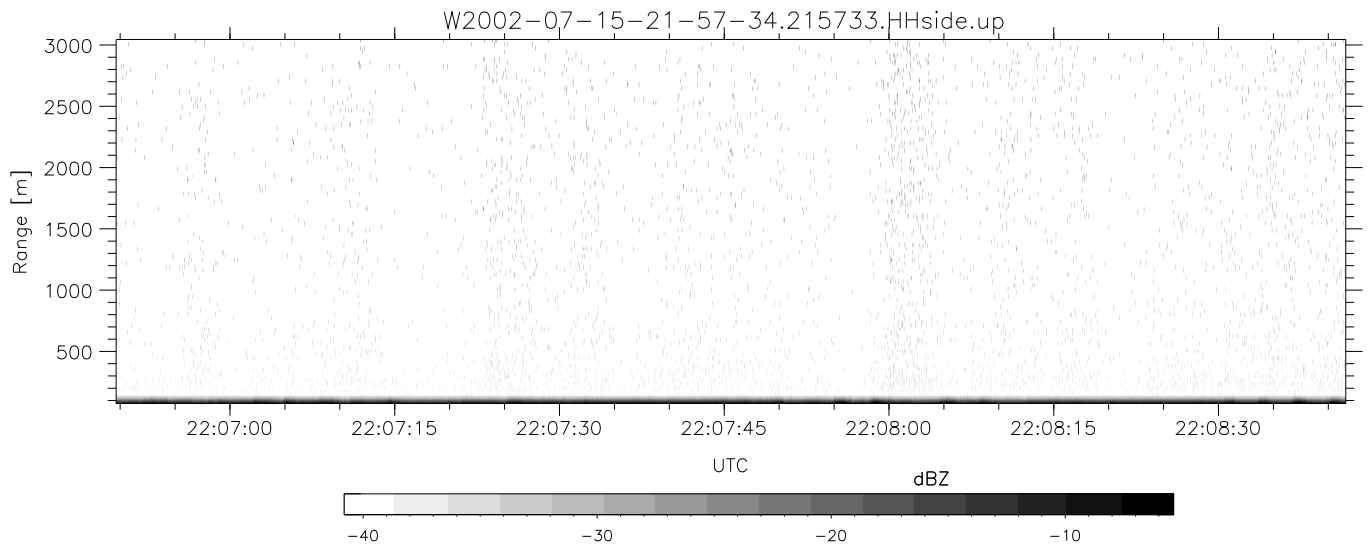
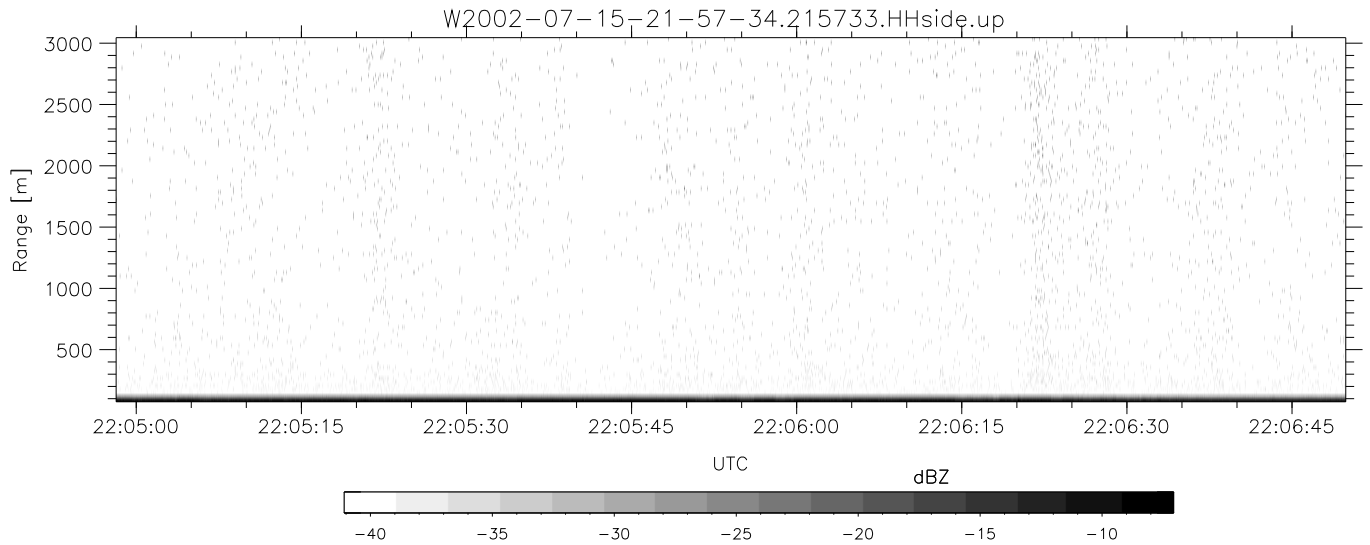
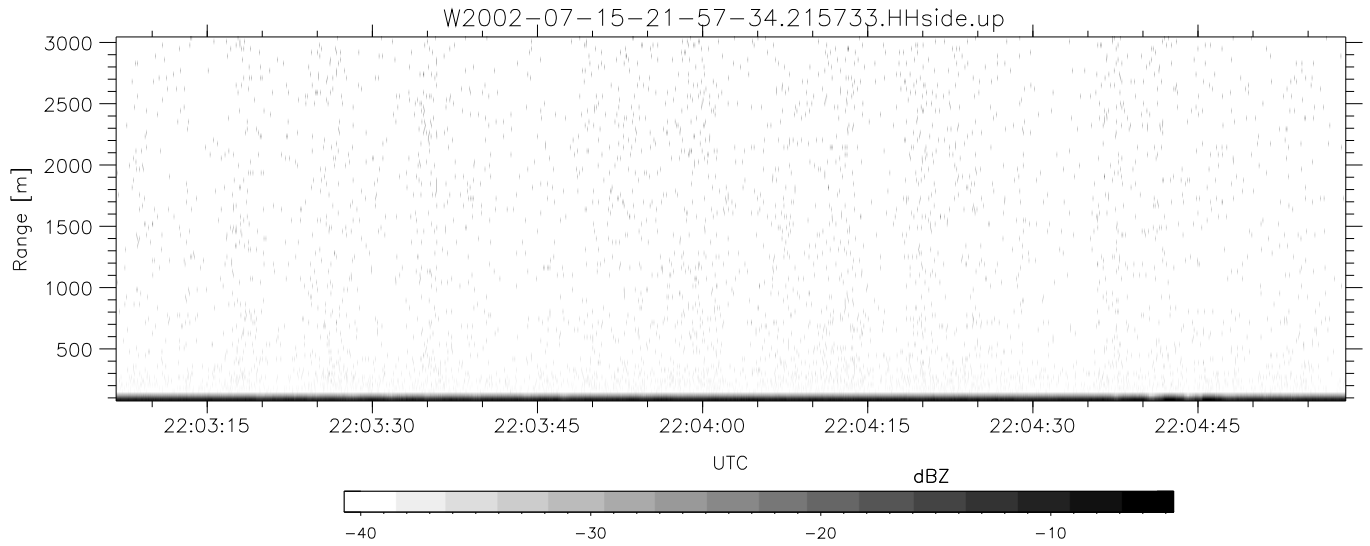


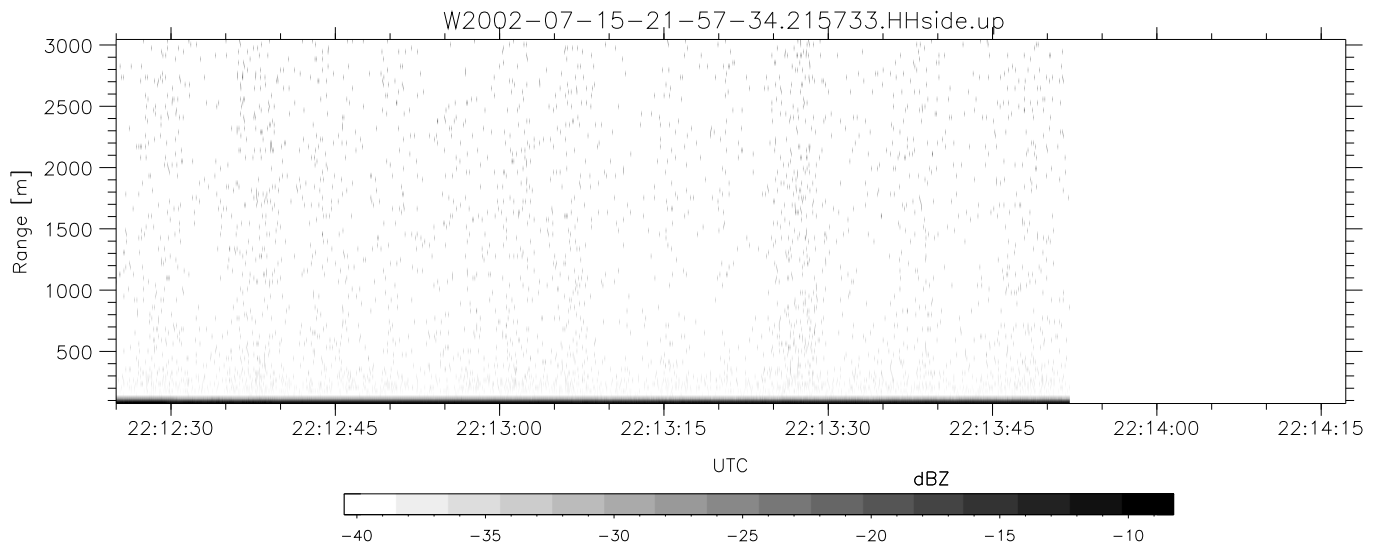
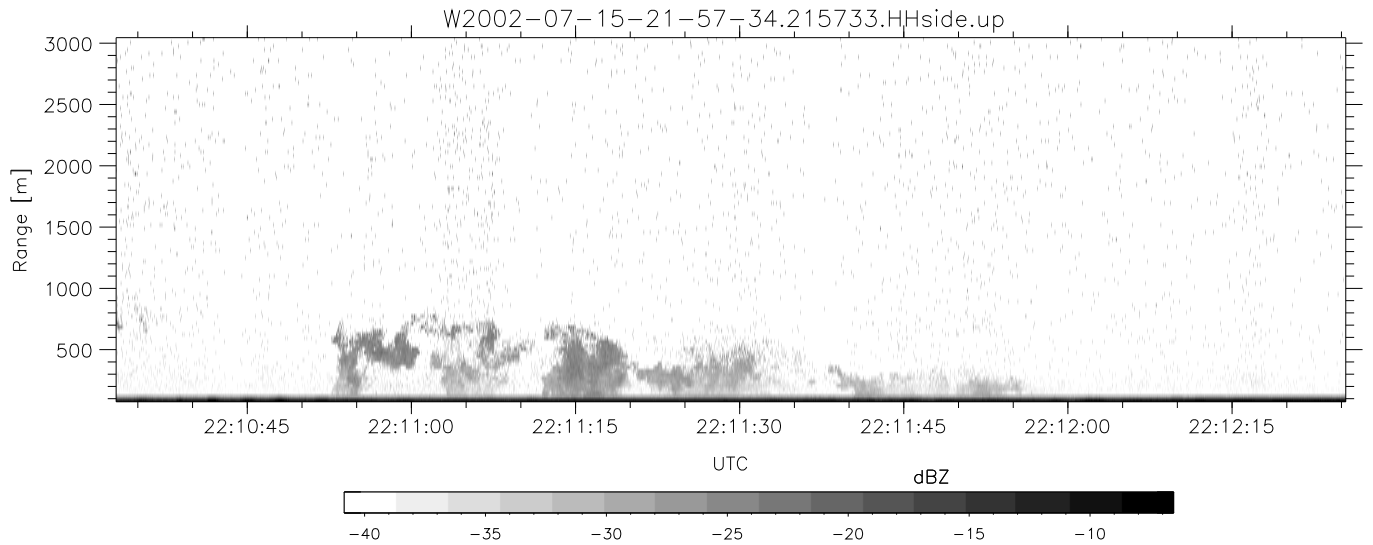
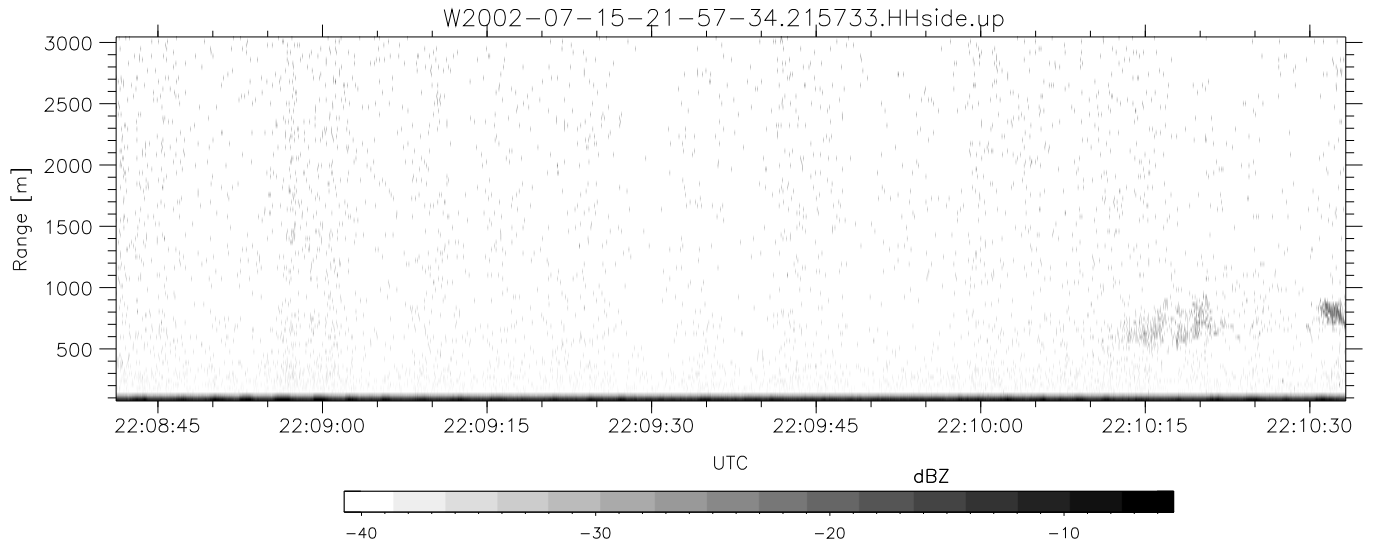
HiCu 2002 (dual-antenna config, modes 1,3,4,5,6,7) Data (cal: 49.0,50.0)

	Min	Max	Mean	Std	Varc%	
W2002-07-15-21-57-34 - PPMAG4						
IRIG:1,UTC: 21:57:33.09 to 22:15:52.49, Dur: 1099s	hhN(dB)	-66.68	-62.95	-64.66	-74.25	11.0
TimeLngth: 1099.40s, TimeInt: 29ms (33.6pps)	vvN(dB)	-69.57	-65.99	-67.79	-77.45	10.8
TimeCor=-13.0s, DSPDif(mn,min,mx):29,28,265	hhL(dB)	-21.96	0.91	-4.54	-6.75	60.1
PPS(min,max,std): 13,36,2.23	vvL(dB)	-32.61	-2.72	-11.89	-10.48	138.
Prof: 613 to 37573, NumProf(t/r): 36960/33134	ppN(m/s)	-12.55	12.57	-0.04	4.15	
ProcTime/Recs: 21:57:33-22:13:52/0-33133	ppT(m/s)	-99.12	99.30	-0.32	32.79	
MxACQtime: 33ms; DRate: 188.2KB/s; Flags: 0, 0, 0	hh/vv(dB)	-NaN	36.42	23.30	29.63	429.
Pulse: 275ns, IFfilt: 5.0MHz; ppPol: HH HV VV	vh/hh(dB)	-99.00	-99.00	-99.00	-99.00	-99.
TxPol: HHVV, PRF: 20 10 20 10 kHz	hv/vv(dB)	-NaN	-34.81	-47.62	-44.43	208.
Range: Delay 75m, Spacing 30m, Gates 100	hnjmp(dB)	-2.24	2.79	0.20	-8.33	14.0
Ave. Pulses: 84, Rng/Prof Aspect@90m/s: 11.2	vnjmp(dB)	-2.55	2.92	0.20	-8.23	14.3



HiCu 2002 (dual-antenna config, modes 1,3,4,5,6,7) Data (cal: 49.0,50.0)

W2002-07-15-21-57-34 - PPMAG4	Min	Max	Mean	Std	Varc%	
IRIG:1,UTC: 21:57:33.09 to 22:15:52.49, Dur: 1099s	hhN (dB)	-66.68	-62.95	-64.66	-74.25	11.0
TimeLngth: 1099.40s, TimeInt: 29ms (33.6pps)	vvN (dB)	-69.57	-65.99	-67.79	-77.45	10.8
TimeCor=-13.0s, DSPDif(mn,min,mx):29,28,265	hhL (dB)	-21.96	0.91	-4.54	-6.75	60.1
PPS(min,max,std): 13,36,2.23	vvL (dB)	-32.61	-2.72	-11.89	-10.48	138.
Prof: 613 to 37573, NumProf(t/r): 36960/33134	ppN (m/s)	-12.55	12.57	-0.04	4.15	
ProcTime/Recs: 21:57:33-22:13:52/0-33133	ppT (m/s)	-99.12	99.30	-0.32	32.79	
MxACQtime: 33ms; DRate: 188.2KB/s; Flags: 0, 0, 0	hh/vv (dB)	-NaN	36.42	23.30	29.63	429.
Pulse: 275ns, IFilt: 5.0MHz; ppPol: HH HV VV	vh/hh (dB)	-99.00	-99.00	-99.00	-99.00	-99.
TxPol: HHVV, PRF: 20 10 20 10 kHz	hv/vv (dB)	-NaN	-34.81	-47.62	-44.43	208.
Range: Delay 75m, Spacing 30m, Gates 100	hn_jmp (dB)	-2.24	2.79	0.20	-8.33	14.0
Ave. Pulses: 84, Rng/Prof Aspect@90m/s: 11.2	vn_jmp (dB)	-2.55	2.92	0.20	-8.23	14.3



HiCu 2002 (dual-antenna config, modes 1,3,4,5,6,7) Data (cal: 49.0,50.0)

	Min	Max	Mean	Std	Varc%	
W2002-07-15-21-57-34 - PPMAG4						
IRIG:1,UTC: 21:57:33.09 to 22:15:52.49, Dur: 1099s	hhN (dB)	-66.68	-62.95	-64.66	-74.25	11.0
TimeLngth: 1099.40s, TimeInt: 29ms (33.6pps)	vvN (dB)	-69.57	-65.99	-67.79	-77.45	10.8
TimeCor=-13.0s, DSPDif(mn,min,mx):29,28,265	hhL (dB)	-21.96	0.91	-4.54	-6.75	60.1
PPS(min,max,std): 13,36,2.23	vvL (dB)	-32.61	-2.72	-11.89	-10.48	138.
Prof: 613 to 37573, NumProf(t/r): 36960/33134	ppN (m/s)	-12.55	12.57	-0.04	4.15	
ProcTime/Recs: 21:57:33-22:13:52/0-33133	ppT (m/s)	-99.12	99.30	-0.32	32.79	
MxACQtime: 33ms; DRate: 188.2KB/s; Flags: 0, 0, 0	hh/vv (dB)	-NaN	36.42	23.30	29.63	429.
Pulse: 275ns, IFfilt: 5.0MHz; ppPol: HH HV VV	vh/hh (dB)	-99.00	-99.00	-99.00	-99.00	-99.
TxPol: HHVV, PRF: 20 10 20 10 kHz	hv/vv (dB)	-NaN	-34.81	-47.62	-44.43	208.
Range: Delay 75m, Spacing 30m, Gates 100	hnjmp (dB)	-2.24	2.79	0.20	-8.33	14.0
Ave. Pulses: 84, Rng/Prof Aspect@90m/s: 11.2	vnjmp (dB)	-2.55	2.92	0.20	-8.23	14.3