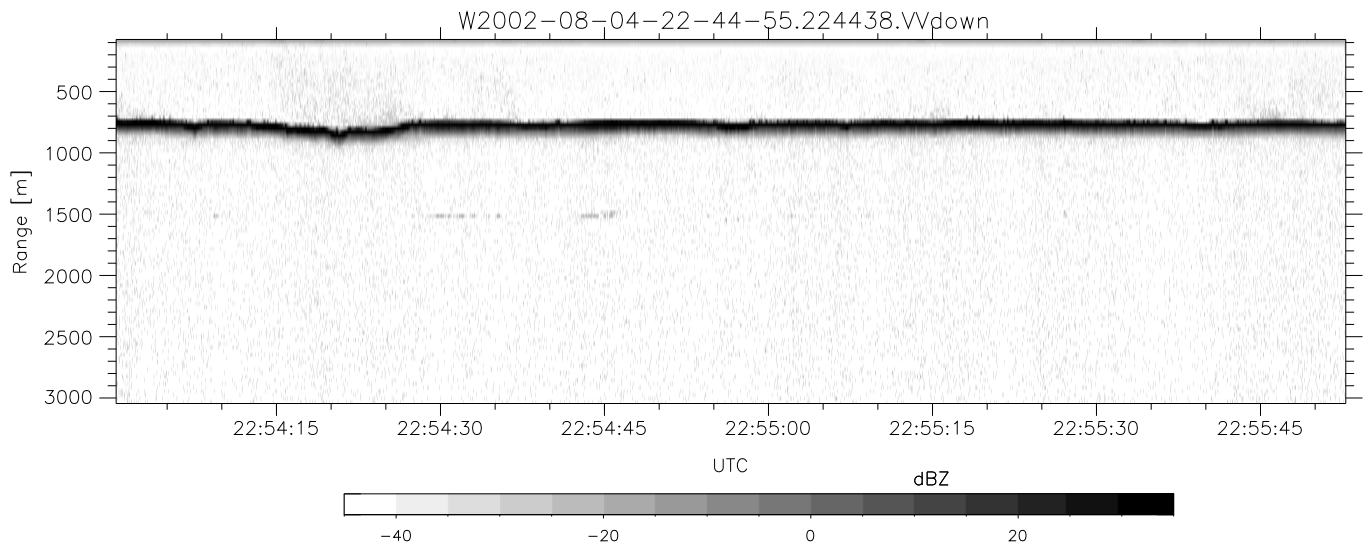
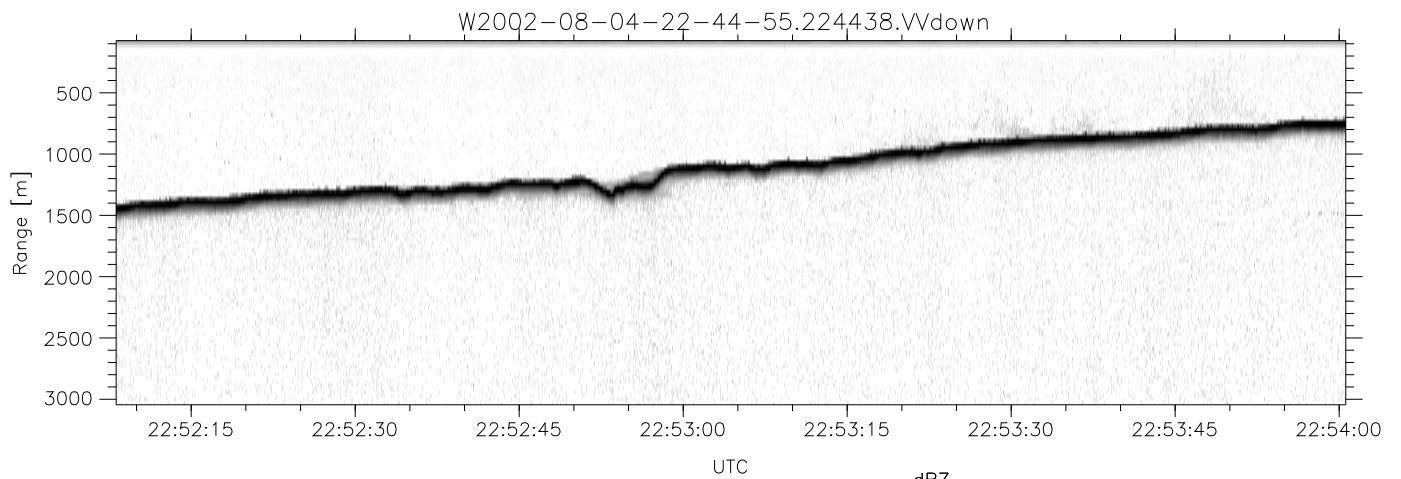
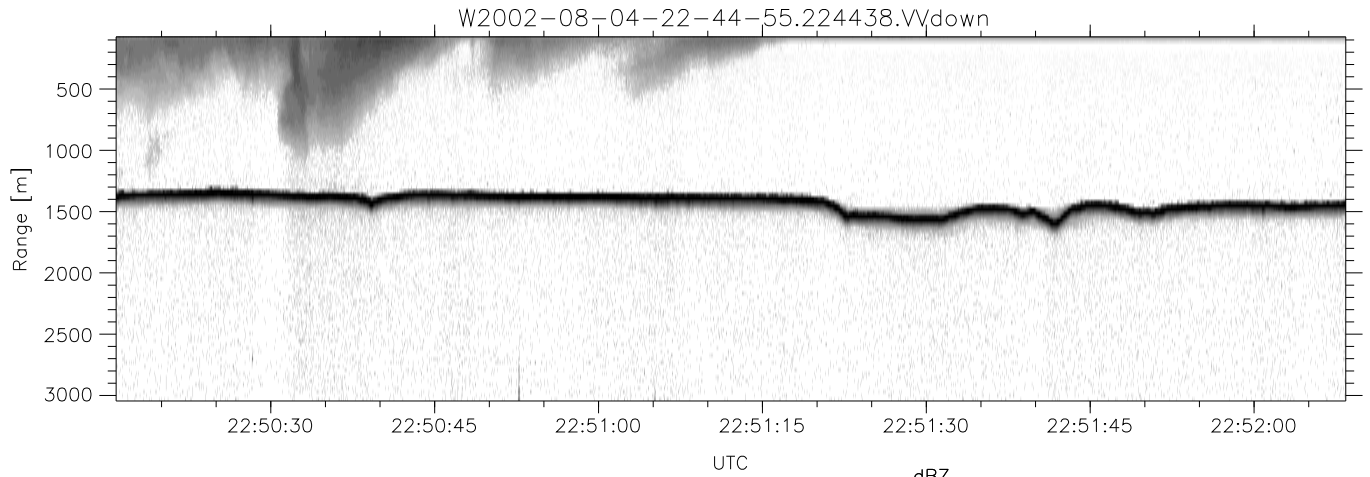


HiCu 2002 (dual-antenna config, modes 1,3,4,5,6,7) Data (cal: 55.0,50.0)

W2002-08-04-22-44-55 - SPPMAG
 IRIG:1,UTC: 22:44:38.96 to 23:03:51.41, Dur: 1153s
 TimeLngth: 1152.45s, TimeInt: 29ms (34.3pps)
 TimeCor=-13.0s, DSPDif(mn,min,mx):29,28,371
 PPS(min,max,std): 23,35,0.91
 Prof: 181 to 39749, NumProf(t/r): 39568/34138
 ProcTime/Recs: 22:44:38-23:01:13/0-34137
 MxACQtime: 26ms; DRate: 55.4KB/s; Flags: 0, 0, 0
 Pulse: 275ns, IFfilt: 5.0MHz; ppPol: VV
 TxPol: V, PRF: 20 kHz
 Range: Delay 75m, Spacing 30m, Gates 100
 Ave. Pulses: 520, Rng/Prof Aspect@90m/s: 11.4

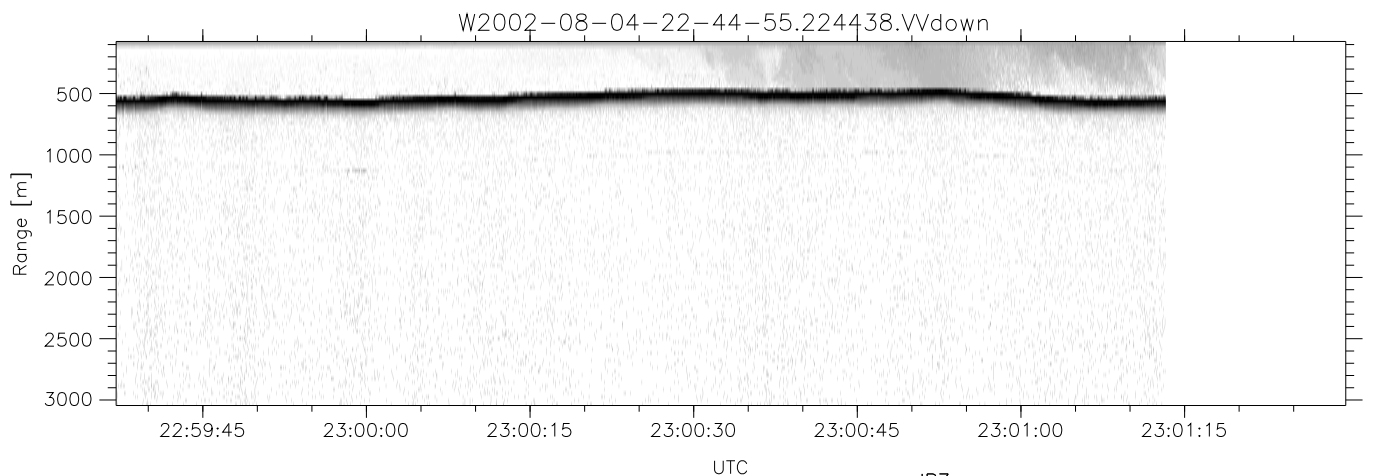
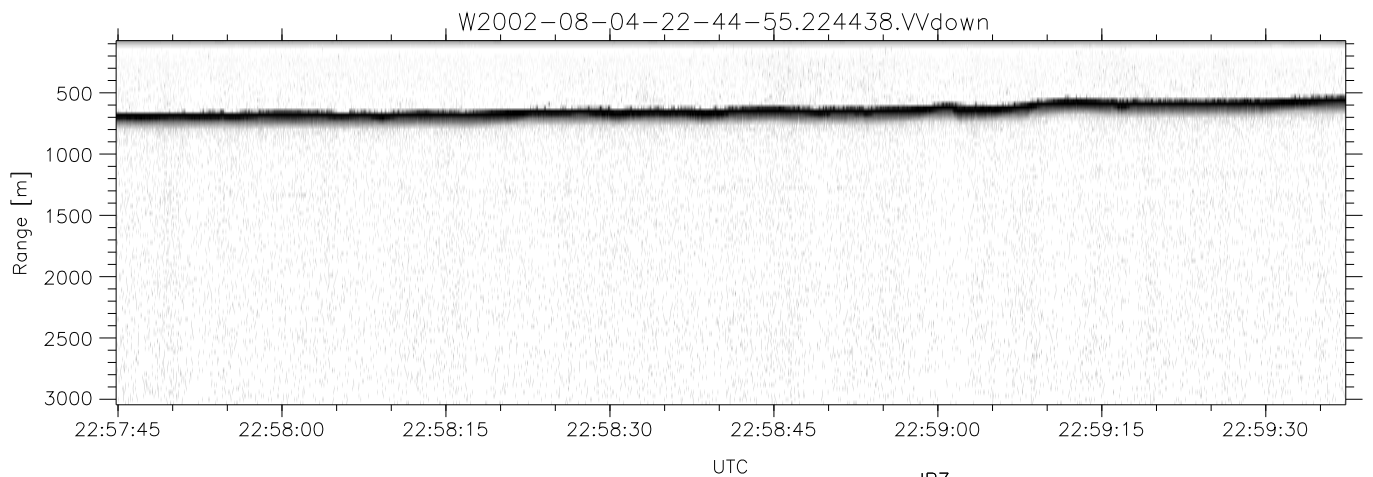
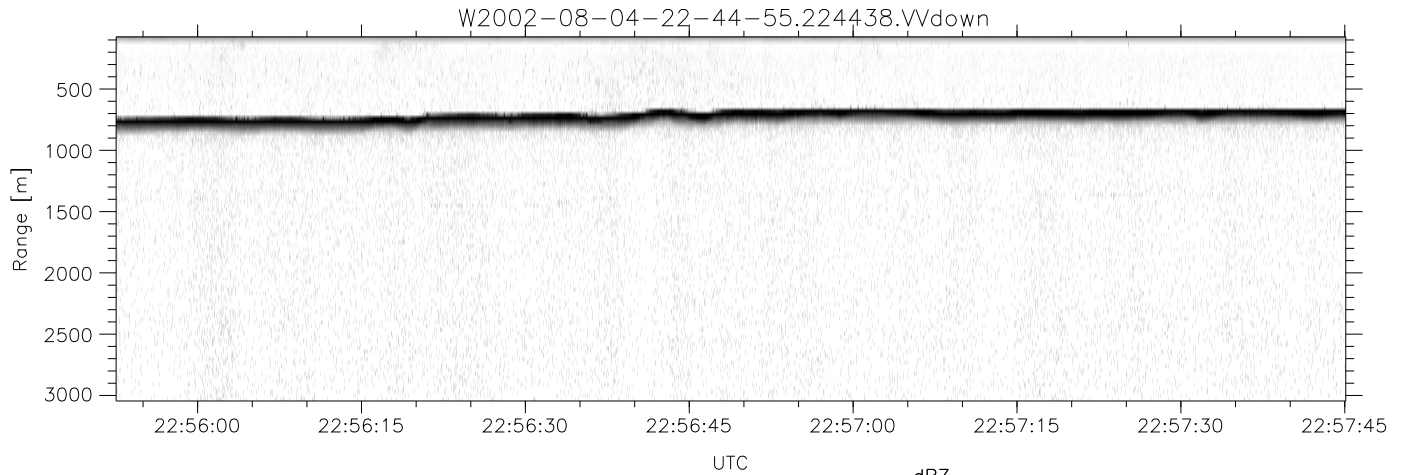
	Min	Max	Mean	Std	Varc%
hhN(dB)	-71.55	-70.10	-70.82	-84.61	4.2
vvN(dB)	-67.74	-65.61	-66.80	-78.52	6.7
vvL(dB)	-9.74	-3.45	-6.06	-12.95	20.5
hvL(dB)	-71.76	-70.02	-70.79	-84.62	4.1
ppN(m/s)	-15.80	15.80	-0.05	9.04	
ppT(m/s)	-0.01	0.01	-0.00	0.00	
hv/vv(dB)	-NaN	-41.78	-NaN	-50.72	-895
hn_jmp(dB)				0.12	
vn_jmp(dB)				0.16	



HiCu 2002 (dual-antenna config, modes 1,3,4,5,6,7) Data (cal: 55.0,50.0)

W2002-08-04-22-44-55 - SPPMAG
 IRIG:1,UTC: 22:44:38.96 to 23:03:51.41, Dur: 1153s
 TimeLngth: 1152.45s, TimeInt: 29ms (34.3pps)
 TimeCor=-13.0s, DSPDif(mn,min,mx):29,28,371
 PPS(min,max,std): 23,35,0.91
 Prof: 181 to 39749, NumProf(t/r): 39568/34138
 ProcTime/Recs: 22:44:38-23:01:13/0-34137
 MxACQtime: 26ms; DRate: 55.4KB/s; Flags: 0, 0, 0
 Pulse: 275ns, IFfilt: 5.0MHz; ppPol: VV
 TxPol: V, PRF: 20 kHz
 Range: Delay 75m, Spacing 30m, Gates 100
 Ave. Pulses: 520, Rng/Prof Aspect@90m/s: 11.4

	Min	Max	Mean	Std	Varc%
hhN(dB)	-71.55	-70.10	-70.82	-84.61	4.2
vvN(dB)	-67.74	-65.61	-66.80	-78.52	6.7
vvL(dB)	-9.74	-3.45	-6.06	-12.95	20.5
hvL(dB)	-71.76	-70.02	-70.79	-84.62	4.1
ppN(m/s)	-15.80	15.80	-0.05	9.04	
ppT(m/s)	-0.01	0.01	-0.00	0.00	
hv/vv(dB)	-NaN	-41.78	-NaN	-50.72	-895
hnjmp(dB)				0.12	
vnjmp(dB)				0.16	



HiCu 2002 (dual-antenna config, modes 1,3,4,5,6,7) Data (cal: 55.0,50.0)

W2002-08-04-22-44-55 - SPPMAG
 IRIG:1,UTC: 22:44:38.96 to 23:03:51.41, Dur: 1153s
 TimeLngth: 1152.45s, TimeInt: 29ms (34.3pps)
 TimeCor=-13.0s, DSPDif(mn,min,mx):29,28,371
 PPS(min,max,std): 23,35,0.91
 Prof: 181 to 39749, NumProf(t/r): 39568/34138
 ProcTime/Recs: 22:44:38-23:01:13/0-34137
 MxACQtime: 26ms; DRate: 55.4KB/s; Flags: 0, 0, 0
 Pulse: 275ns, IFfilt: 5.0MHz; ppPol: VV
 TxPol: V, PRF: 20 kHz
 Range: Delay 75m, Spacing 30m, Gates 100
 Ave. Pulses: 520, Rng/Prof Aspect@90m/s: 11.4

	Min	Max	Mean	Std	Varc%
hhN(dB)	-71.55	-70.10	-70.82	-84.61	4.2
vvN(dB)	-67.74	-65.61	-66.80	-78.52	6.7
vvL(dB)	-9.74	-3.45	-6.06	-12.95	20.5
hvL(dB)	-71.76	-70.02	-70.79	-84.62	4.1
ppN(m/s)	-15.80	15.80	-0.05	9.04	
ppT(m/s)	-0.01	0.01	-0.00	0.00	
hv/vv(dB)	-NaN	-41.78	-NaN	-50.72	-895
hn_jmp(dB)			0.12		
vn_jmp(dB)			0.16		