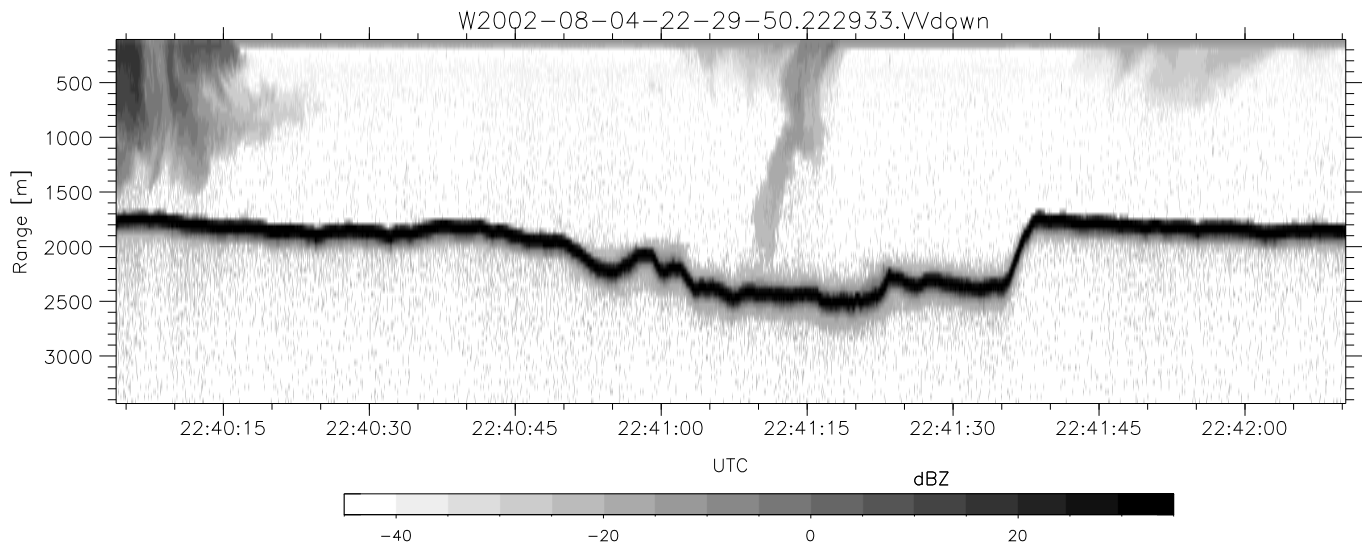
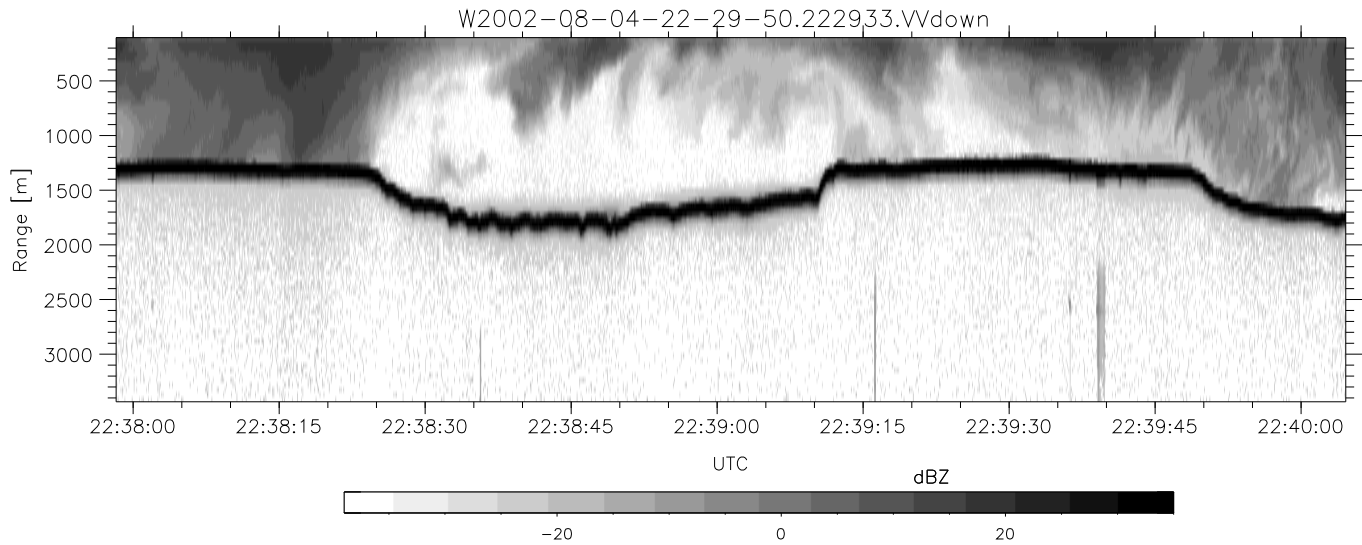
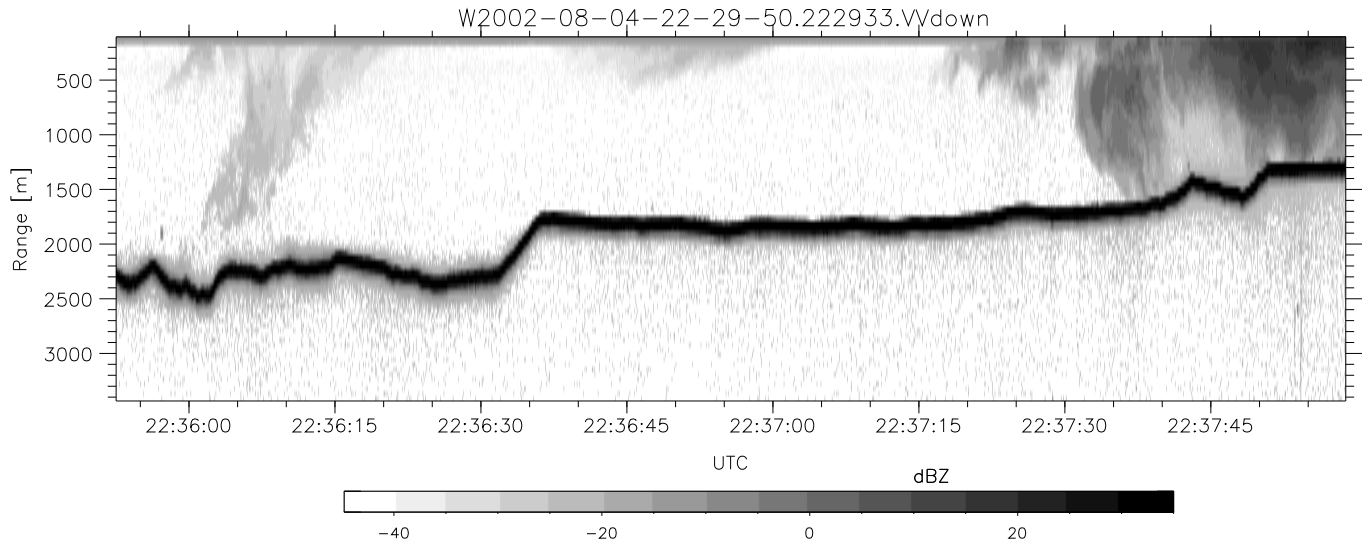


HiCu 2002 (dual-antenna config, modes 1,3,4,5,6,7) Data (cal: 55.0,50.0)

W2002-08-04-22-29-50 - SPPMAG
 IRIG:1,UTC: 22:29:33.89 to 22:44:04.10, Dur: 871s
 TimeLngth: 870.22s, TimeInt: 67ms (14.7pps)
 TimeCor=-13.0s, DSPDif(mn,min,mx):67,67,323
 PPS(min,max,std): 10,15,0.53
 Prof: 296 to 13120, NumProf(t/r): 12824/12824
 MxACQtime: 64ms; DRate: 18.0KB/s; Flags: 0, 0, 0
 Pulse: 575ns, IFfilt: 2.0MHz; ppPol: VV
 TxPol: V, PRF: 10 kHz
 Range: Delay 105m, Spacing 45m, Gates 75
 Ave. Pulses: 648, Rng/Prof Aspect@90m/s: 7.4

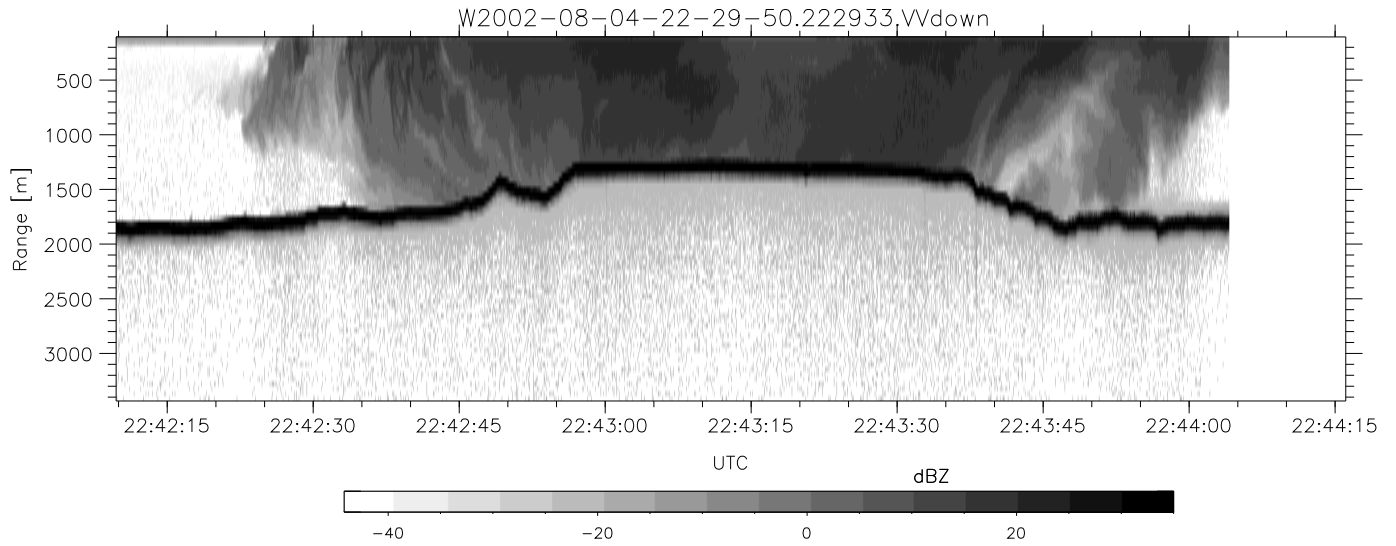
	Min	Max	Mean	Std	Varc%
hhN(dB)	-75.56	-74.60	-75.10	-90.52	2.9
vvN(dB)	-71.71	-70.11	-70.91	-83.78	5.2
vvL(dB)	-6.01	-0.42	-2.26	-10.32	15.6
hvL(dB)	-75.53	-74.50	-75.07	-90.45	2.9
ppN(m/s)	-7.90	7.90	-0.07	4.34	
ppT(m/s)	-0.01	0.01	-0.00	0.00	
hv/vv(dB)	-NaN	-47.92	-76.89	-58.46	6976
hnjmp(dB)			-0.07		
vnjmp(dB)			-0.16		



HiCu 2002 (dual-antenna config, modes 1,3,4,5,6,7) Data (cal: 55.0,50.0)

W2002-08-04-22-29-50 - SPPMAG
 IRIG:1,UTC: 22:29:33.89 to 22:44:04.10, Dur: 871s
 TimeLngth: 870.22s, TimeInt: 67ms (14.7pps)
 TimeCor=-13.0s, DSPDif(mn,min,mx):67,67,323
 PPS(min,max,std): 10,15,0.53
 Prof: 296 to 13120, NumProf(t/r): 12824/12824
 MxACQtime: 64ms; DRate: 18.0KB/s; Flags: 0, 0, 0
 Pulse: 575ns, IFfilt: 2.0MHz; ppPol: VV
 TxPol: V, PRF: 10 kHz
 Range: Delay 105m, Spacing 45m, Gates 75
 Ave. Pulses: 648, Rng/Prof Aspect@90m/s: 7.4

	Min	Max	Mean	Std	Varc%
hhN(dB)	-75.56	-74.60	-75.10	-90.52	2.9
vvN(dB)	-71.71	-70.11	-70.91	-83.78	5.2
vvL(dB)	-6.01	-0.42	-2.26	-10.32	15.6
hvL(dB)	-75.53	-74.50	-75.07	-90.45	2.9
ppN(m/s)	-7.90	7.90	-0.07	4.34	
ppT(m/s)	-0.01	0.01	-0.00	0.00	
hv/vv(dB)	-NaN	-47.92	-76.89	-58.46	6976
hnjmp(dB)			-0.07		
vnjmp(dB)			-0.16		



HiCu 2002 (dual-antenna config, modes 1,3,4,5,6,7) Data (cal: 55.0,50.0)

W2002-08-04-22-29-50 - SPPMAG
 IRIG:1,UTC: 22:29:33.89 to 22:44:04.10, Dur: 871s
 TimeLngth: 870.22s, TimeInt: 67ms (14.7pps)
 TimeCor=-13.0s, DSPDif(mn,min,mx):67,67,323
 PPS(min,max,std): 10,15,0.53
 Prof: 296 to 13120, NumProf(t/r): 12824/12824
 MxACQtime: 64ms; DRate: 18.0KB/s; Flags: 0, 0, 0
 Pulse: 575ns, IFfilt: 2.0MHz; ppPol: VV
 TxPol: V, PRF: 10 kHz
 Range: Delay 105m, Spacing 45m, Gates 75
 Ave. Pulses: 648, Rng/Prof Aspect@90m/s: 7.4

	Min	Max	Mean	Std	Varc%
hhN(dB)	-75.56	-74.60	-75.10	-90.52	2.9
vvN(dB)	-71.71	-70.11	-70.91	-83.78	5.2
vvL(dB)	-6.01	-0.42	-2.26	-10.32	15.6
hvL(dB)	-75.53	-74.50	-75.07	-90.45	2.9
ppN(m/s)	-7.90	7.90	-0.07	4.34	
ppT(m/s)	-0.01	0.01	-0.00	0.00	
hv/vv(dB)	-NaN	-47.92	-76.89	-58.46	6976
hnjmp(dB)			-0.07		
vnjmp(dB)			-0.16		