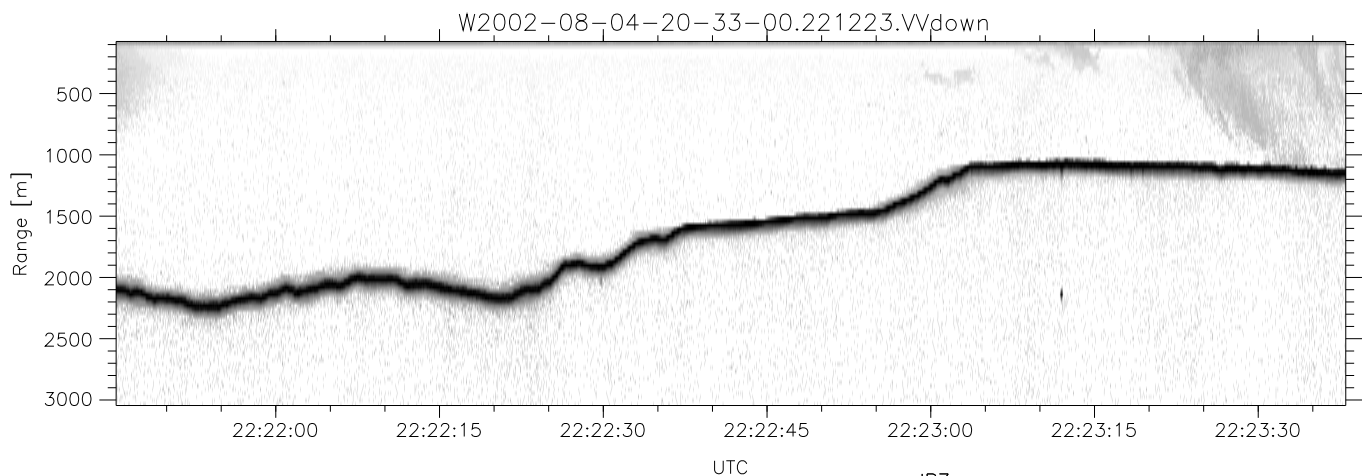
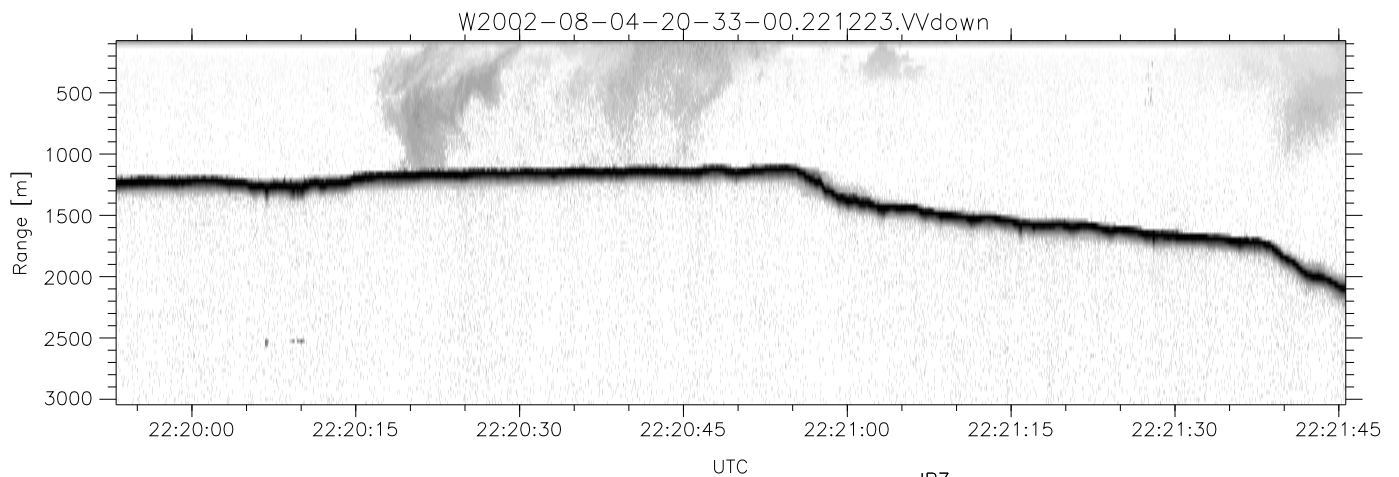
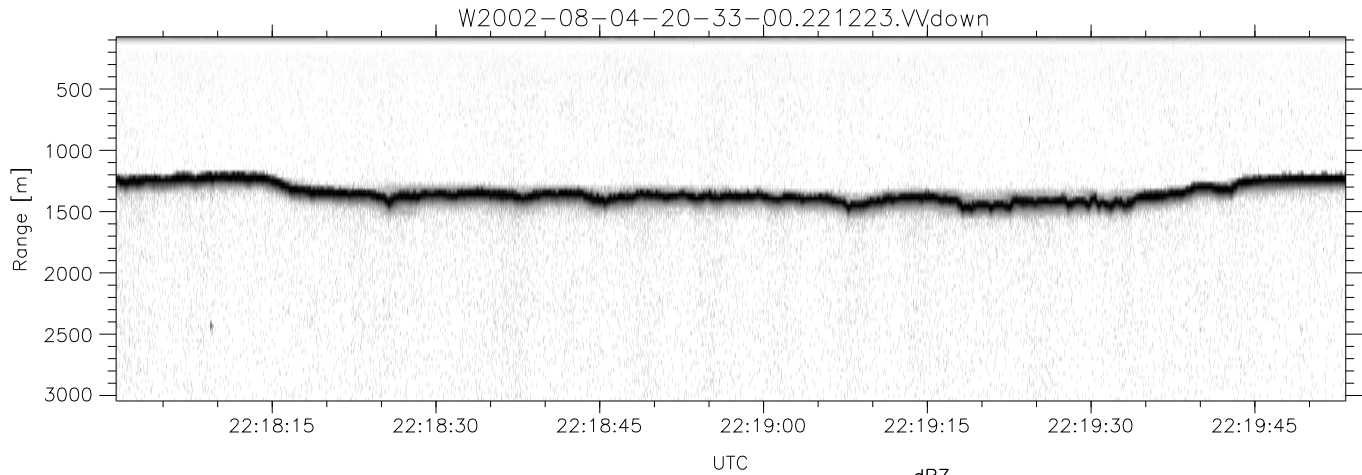


HiCu 2002 (dual-antenna config, modes 1,3,4,5,6,7) Data (cal: 55.0,50.0)

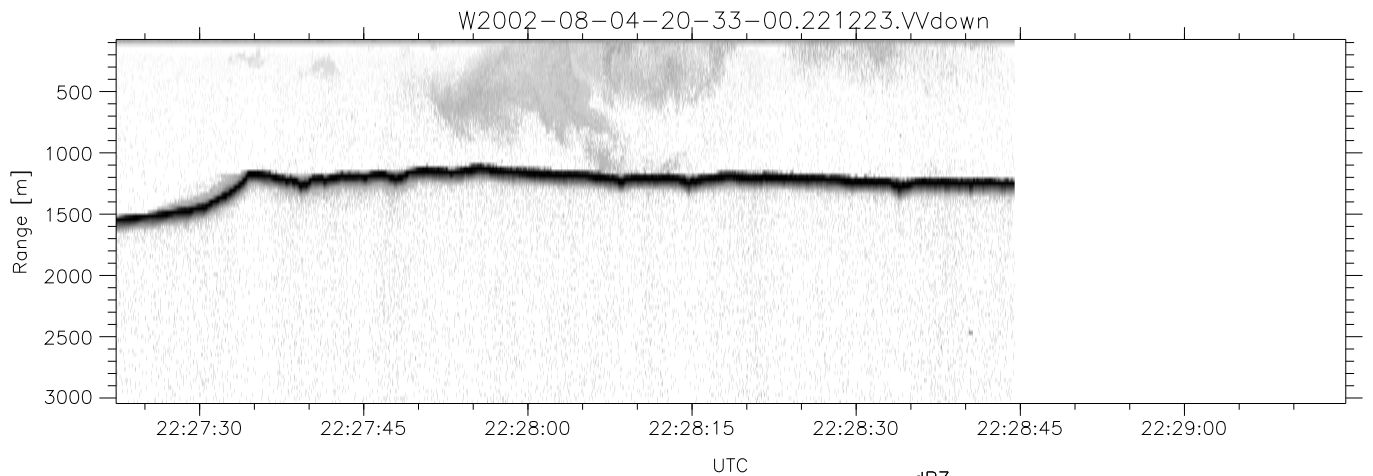
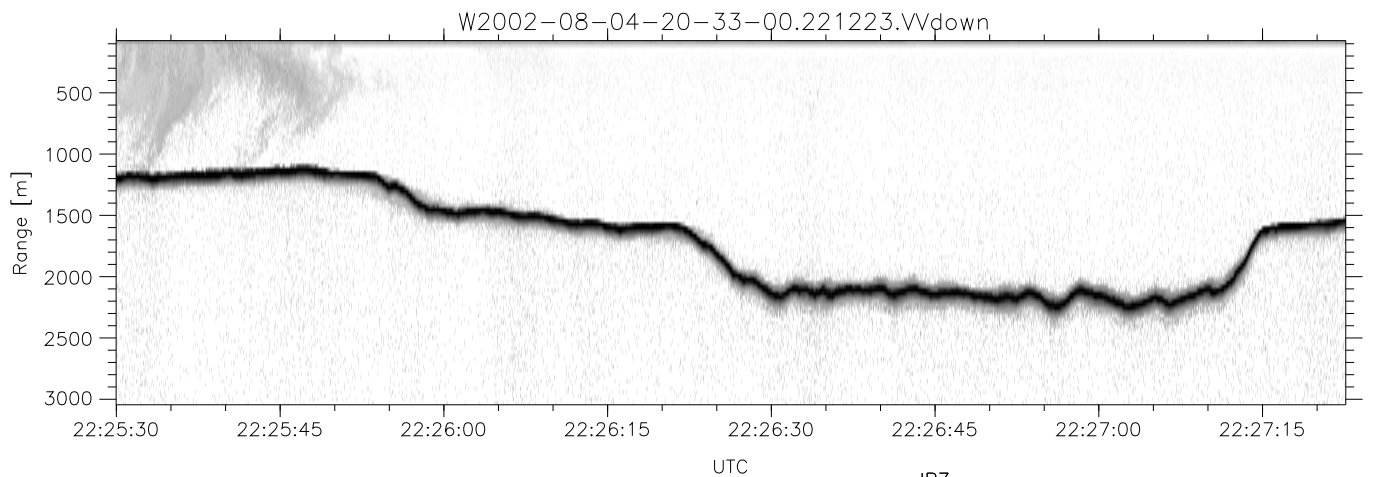
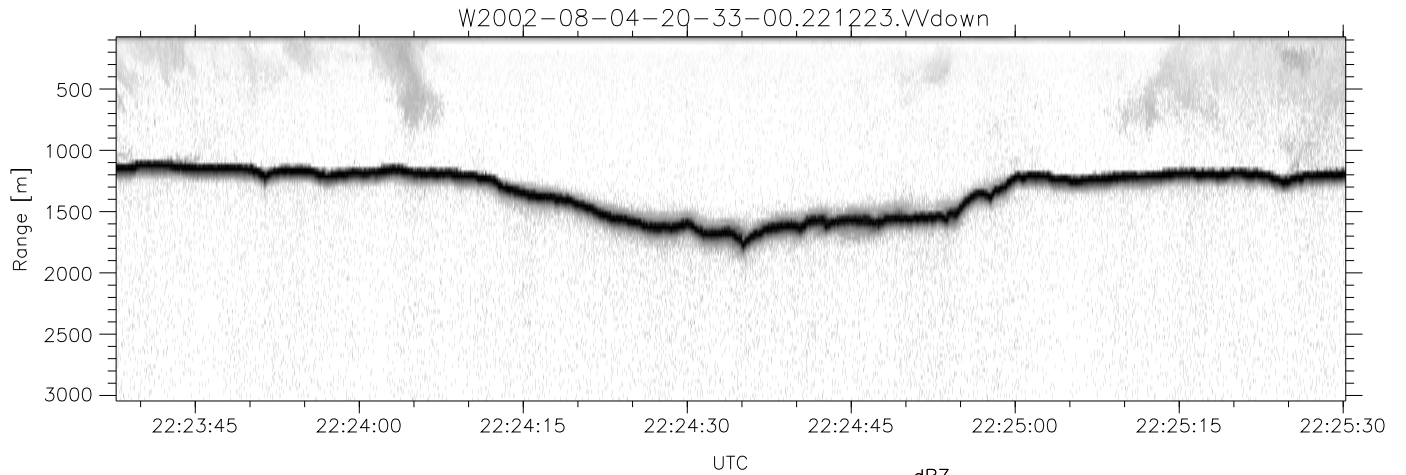
W2002-08-04-20-33-00 - SPPMAG	Min	Max	Mean	Std	Varc%	
IRIG:1,UTC: 20:32:44.69 to 22:28:44.46, Dur: 6960s	hhN(dB)	-71.47	-70.05	-70.77	-84.64	4.1
TimeLngth: 6959.78s, TimeInt: 29ms (34.3pps)	vvN(dB)	-67.63	-66.06	-66.88	-80.28	4.6
TimeCor=-13.0s, DSPDif(mn,min,mx):29,28,190	vvL(dB)	-8.30	-3.37	-5.09	-13.09	15.9
PPS(min,max,std): 29,35,1.12	hvL(dB)	-71.49	-69.91	-70.75	-84.63	4.1
Prof: 433 to 238854, NumProf(t/r): 238421/33593	ppN(m/s)	-15.80	15.80	-0.01	8.99	
ProcTime/Recs: 22:12:23-22:28:44/204828-238420	ppT(m/s)	-0.01	0.01	-0.00	0.00	
MxACQtime: 26ms; DRate: 55.3KB/s; Flags: 0, 0, 0	hv/vv(dB)	-NaN	-42.51	-66.19	-53.32	1936
Pulse: 275ns, IFfilt: 5.0MHz; ppPol: VV	hn_jmp(dB)			0.12		
TxPol: V, PRF: 20 kHz	vn_jmp(dB)			0.16		
Range: Delay 75m, Spacing 30m, Gates 100						
Ave. Pulses: 520, Rng/Prof Aspect@90m/s: 11.4						



HiCu 2002 (dual-antenna config, modes 1,3,4,5,6,7) Data (cal: 55.0,50.0)

W2002-08-04-20-33-00 - SPPMAG
 IRIG:1,UTC: 20:32:44.69 to 22:28:44.46, Dur: 6960s
 TimeLngth: 6959.78s, TimeInt: 29ms (34.3pps)
 TimeCor=-13.0s, DSPDif(mn,min,mx):29,28,190
 PPS(min,max,std): 29,35,1.12
 Prof: 433 to 238854, NumProf(t/r): 238421/33593
 ProcTime/Recs: 22:12:23-22:28:44/204828-238420
 MxACQtime: 26ms; DRate: 55.3KB/s; Flags: 0, 0, 0
 Pulse: 275ns, IFfilt: 5.0MHz; ppPol: VV
 TxPol: V, PRF: 20 kHz
 Range: Delay 75m, Spacing 30m, Gates 100
 Ave. Pulses: 520, Rng/Prof Aspect@90m/s: 11.4

	Min	Max	Mean	Std	Varc%
hhN(dB)	-71.47	-70.05	-70.77	-84.64	4.1
vvN(dB)	-67.63	-66.06	-66.88	-80.28	4.6
vvL(dB)	-8.30	-3.37	-5.09	-13.09	15.9
hvL(dB)	-71.49	-69.91	-70.75	-84.63	4.1
ppN(m/s)	-15.80	15.80	-0.01	8.99	
ppT(m/s)	-0.01	0.01	-0.00	0.00	
hv/vv(dB)	-NaN	-42.51	-66.19	-53.32	1936
hn_jmp(dB)			0.12		
vn_jmp(dB)			0.16		



HiCu 2002 (dual-antenna config, modes 1,3,4,5,6,7) Data (cal: 55.0,50.0)

W2002-08-04-20-33-00 - SPPMAG
 IRIG:1,UTC: 20:32:44.69 to 22:28:44.46, Dur: 6960s
 TimeLngth: 6959.78s, TimeInt: 29ms (34.3pps)
 TimeCor=-13.0s, DSPDif(mn,min,mx):29,28,190
 PPS(min,max,std): 29,35,1.12
 Prof: 433 to 238854, NumProf(t/r): 238421/33593
 ProcTime/Recs: 22:12:23-22:28:44/204828-238420
 MxACQtime: 26ms; DRate: 55.3KB/s; Flags: 0, 0, 0
 Pulse: 275ns, IFfilt: 5.0MHz; ppPol: VV
 TxPol: V, PRF: 20 kHz
 Range: Delay 75m, Spacing 30m, Gates 100
 Ave. Pulses: 520, Rng/Prof Aspect@90m/s: 11.4

	Min	Max	Mean	Std	Varc%
hhN(dB)	-71.47	-70.05	-70.77	-84.64	4.1
vvN(dB)	-67.63	-66.06	-66.88	-80.28	4.6
vvL(dB)	-8.30	-3.37	-5.09	-13.09	15.9
hvL(dB)	-71.49	-69.91	-70.75	-84.63	4.1
ppN(m/s)	-15.80	15.80	-0.01	8.99	
ppT(m/s)	-0.01	0.01	-0.00	0.00	
hv/vv(dB)	-NaN	-42.51	-66.19	-53.32	1936
hn_jmp(dB)			0.12		
vn_jmp(dB)			0.16		