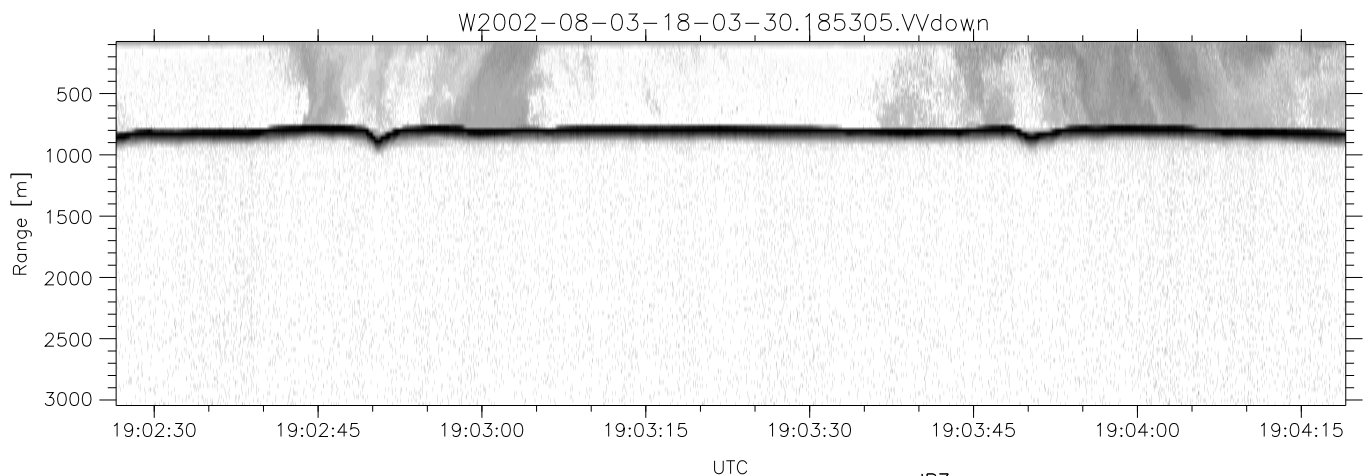
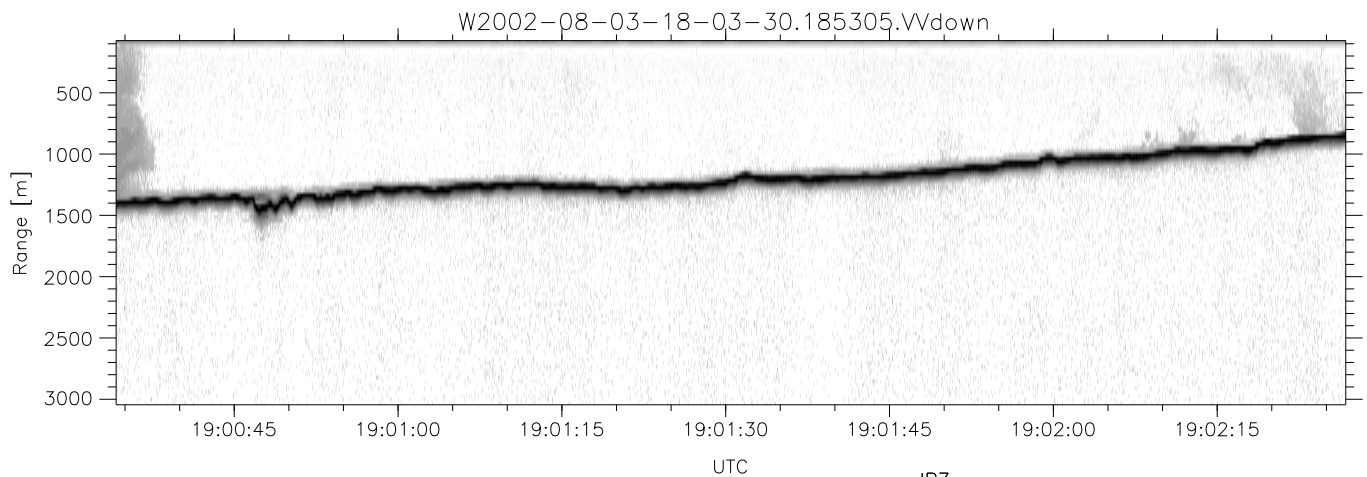
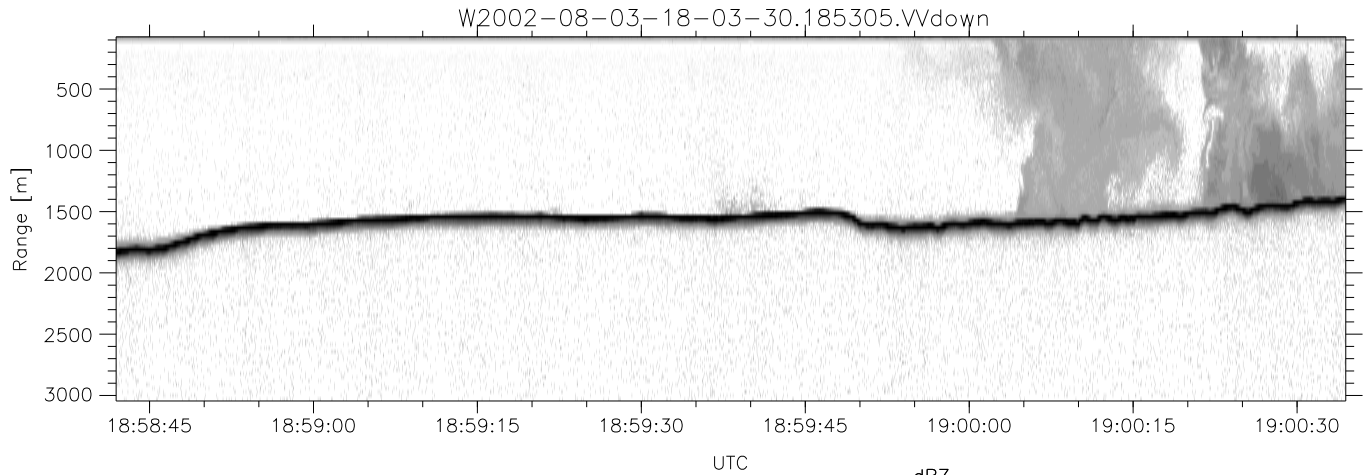


HiCu 2002 (dual-antenna config, modes 1,3,4,5,6,7) Data (cal: 55.0,50.0)

W2002-08-03-18-03-30 - SPPMAG
 IRIG:1,UTC: 18:03:15.35 to 19:10:42.84, Dur: 4047s
 TimeLngth: 4047.49s, TimeInt: 29ms (34.3pps)
 TimeCor=-13.0s, DSPDif(mn,min,mx):29,28,189
 PPS(min,max,std): 29,35,1.14
 Prof: 318 to 138964, NumProf(t/r): 138646/34138
 ProcTime/Recs: 18:53:05-19:09:41/102414-136551
 MxACQtime: 26ms; DRate: 55.3KB/s; Flags: 0, 0, 0
 Pulse: 275ns, IFfilt: 5.0MHz; ppPol: VV
 TxPol: V, PRF: 20 kHz
 Range: Delay 75m, Spacing 30m, Gates 100
 Ave. Pulses: 520, Rng/Prof Aspect@90m/s: 11.4

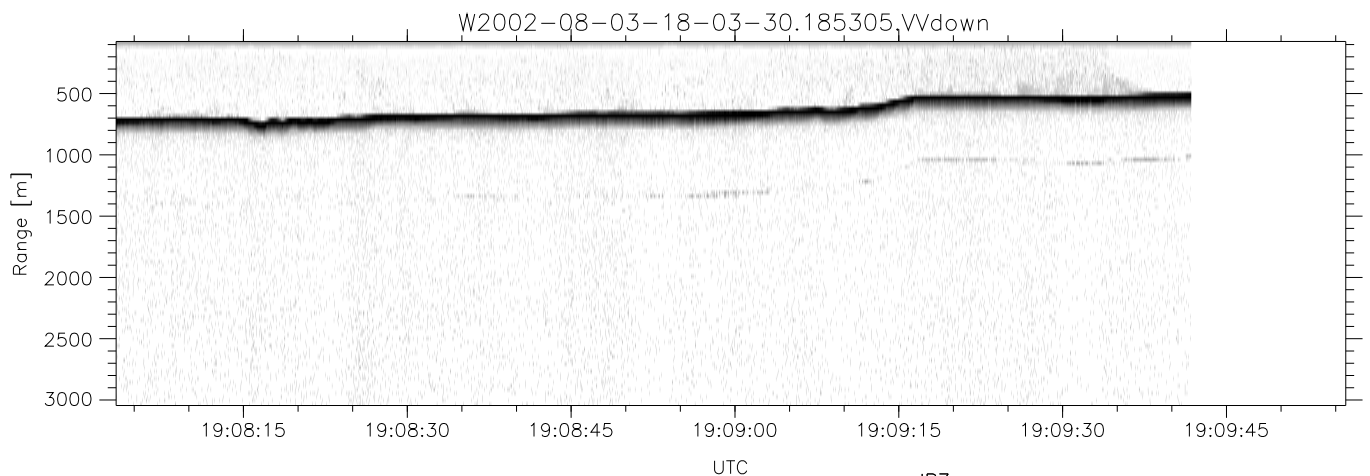
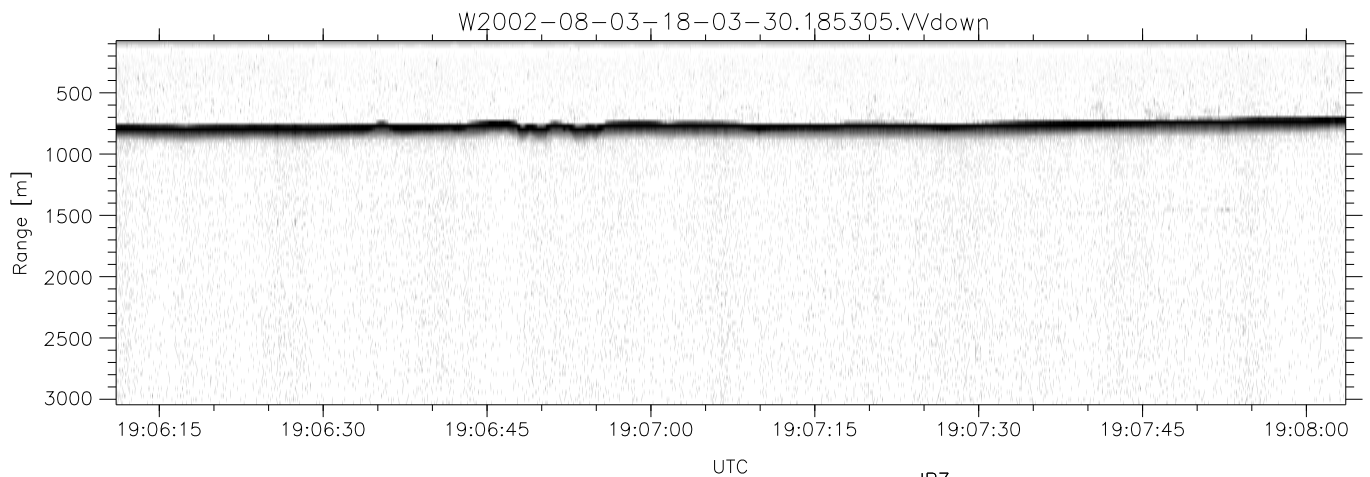
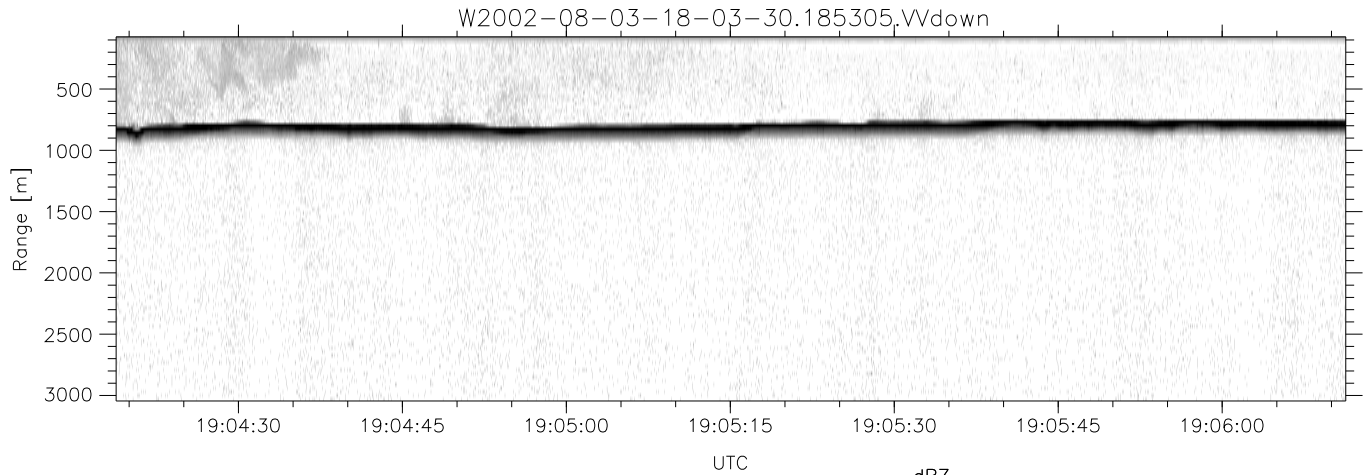
	Min	Max	Mean	Std	Varc%
hhN(dB)	-71.56	-69.97	-70.66	-84.49	4.1
vvN(dB)	-67.54	-65.69	-66.74	-80.15	4.6
vvL(dB)	-11.41	-3.32	-7.03	-11.87	32.8
hvL(dB)	-71.45	-69.95	-70.63	-84.46	4.1
ppN(m/s)	-15.80	15.80	-0.05	9.08	
ppT(m/s)	-0.02	0.01	-0.00	0.00	
hv/vv(dB)	-NaN	-42.09	-NaN	-52.73	-509
hnjmp(dB)	-1.05	0.83	-0.11	-12.75	5.4
vnjmp(dB)	-1.10	0.75	-0.15	-12.61	5.7



HiCu 2002 (dual-antenna config, modes 1,3,4,5,6,7) Data (cal: 55.0,50.0)

W2002-08-03-18-03-30 - SPPMAG
 IRIG:1,UTC: 18:03:15.35 to 19:10:42.84, Dur: 4047s
 TimeLngth: 4047.49s, TimeInt: 29ms (34.3pps)
 TimeCor=-13.0s, DSPDif(mn,min,mx):29,28,189
 PPS(min,max,std): 29,35,1.14
 Prof: 318 to 138964, NumProf(t/r): 138646/34138
 ProcTime/Recs: 18:53:05-19:09:41/102414-136551
 MxACQtime: 26ms; DRate: 55.3KB/s; Flags: 0, 0, 0
 Pulse: 275ns, IFfilt: 5.0MHz; ppPol: VV
 TxPol: V, PRF: 20 kHz
 Range: Delay 75m, Spacing 30m, Gates 100
 Ave. Pulses: 520, Rng/Prof Aspect@90m/s: 11.4

	Min	Max	Mean	Std	Varc%
hhN(dB)	-71.56	-69.97	-70.66	-84.49	4.1
vvN(dB)	-67.54	-65.69	-66.74	-80.15	4.6
vvL(dB)	-11.41	-3.32	-7.03	-11.87	32.8
hvL(dB)	-71.45	-69.95	-70.63	-84.46	4.1
ppN(m/s)	-15.80	15.80	-0.05	9.08	
ppT(m/s)	-0.02	0.01	-0.00	0.00	
hv/vv(dB)	-NaN	-42.09	-NaN	-52.73	-509
hnjmp(dB)	-1.05	0.83	-0.11	-12.75	5.4
vnjmp(dB)	-1.10	0.75	-0.15	-12.61	5.7



HiCu 2002 (dual-antenna config, modes 1,3,4,5,6,7) Data (cal: 55.0,50.0)

W2002-08-03-18-03-30 - SPPMAG
 IRIG:1,UTC: 18:03:15.35 to 19:10:42.84, Dur: 4047s
 TimeLngth: 4047.49s, TimeInt: 29ms (34.3pps)
 TimeCor=-13.0s, DSPDif(mn,min,mx):29,28,189
 PPS(min,max,std): 29,35,1.14
 Prof: 318 to 138964, NumProf(t/r): 138646/34138
 ProcTime/Recs: 18:53:05-19:09:41/102414-136551
 MxACQtime: 26ms; DRate: 55.3KB/s; Flags: 0, 0, 0
 Pulse: 275ns, IFfilt: 5.0MHz; ppPol: VV
 TxPol: V, PRF: 20 kHz
 Range: Delay 75m, Spacing 30m, Gates 100
 Ave. Pulses: 520, Rng/Prof Aspect@90m/s: 11.4

	Min	Max	Mean	Std	Varc%
hhN(dB)	-71.56	-69.97	-70.66	-84.49	4.1
vvN(dB)	-67.54	-65.69	-66.74	-80.15	4.6
vvL(dB)	-11.41	-3.32	-7.03	-11.87	32.8
hvL(dB)	-71.45	-69.95	-70.63	-84.46	4.1
ppN(m/s)	-15.80	15.80	-0.05	9.08	
ppT(m/s)	-0.02	0.01	-0.00	0.00	
hv/vv(dB)	-NaN	-42.09	-NaN	-52.73	-509
hnjmp(dB)	-1.05	0.83	-0.11	-12.75	5.4
vnjmp(dB)	-1.10	0.75	-0.15	-12.61	5.7