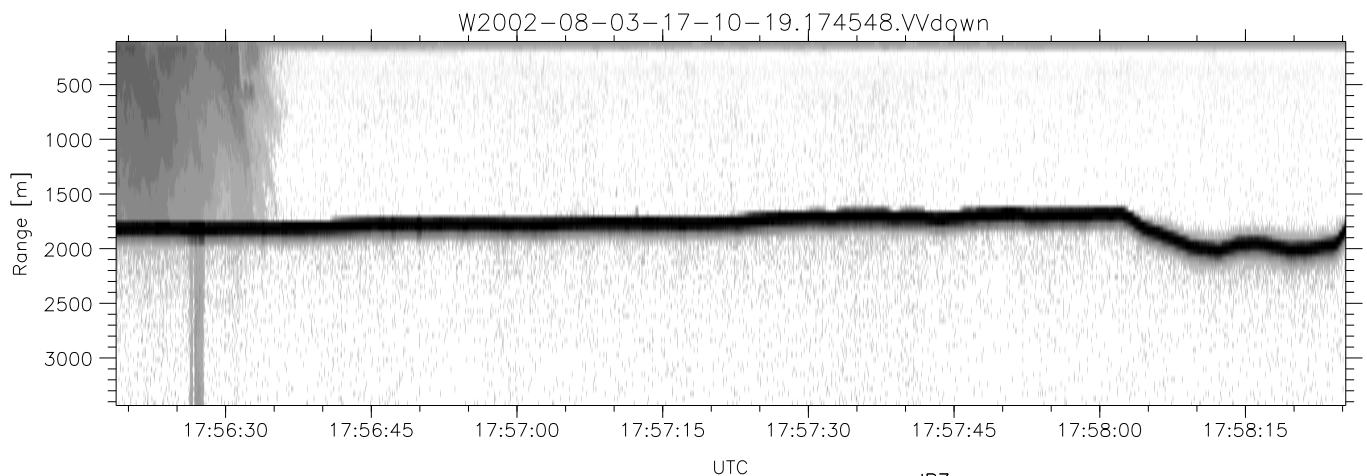
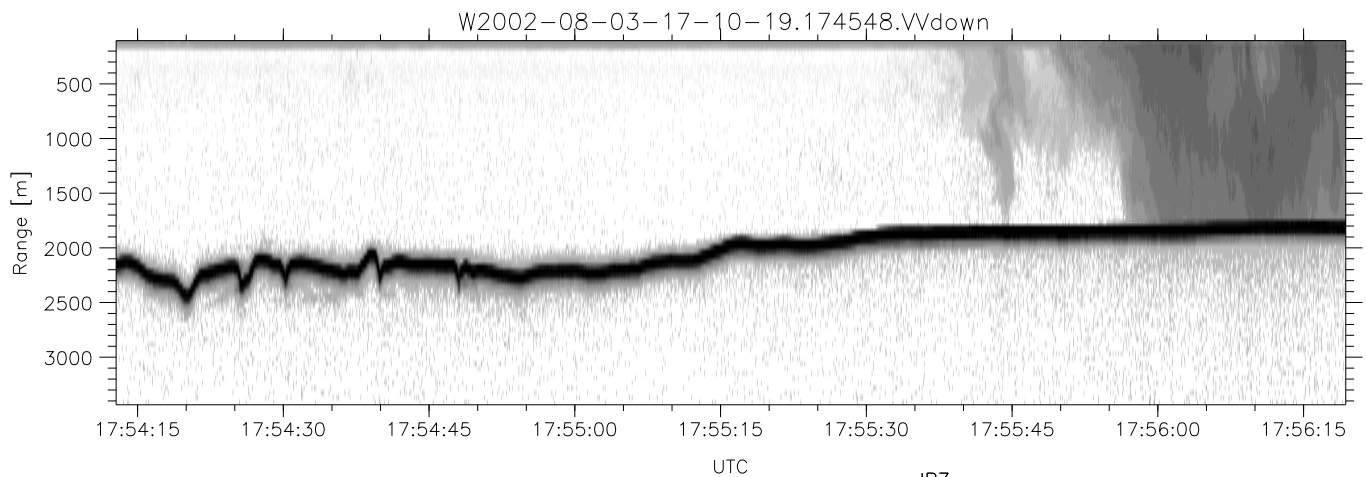
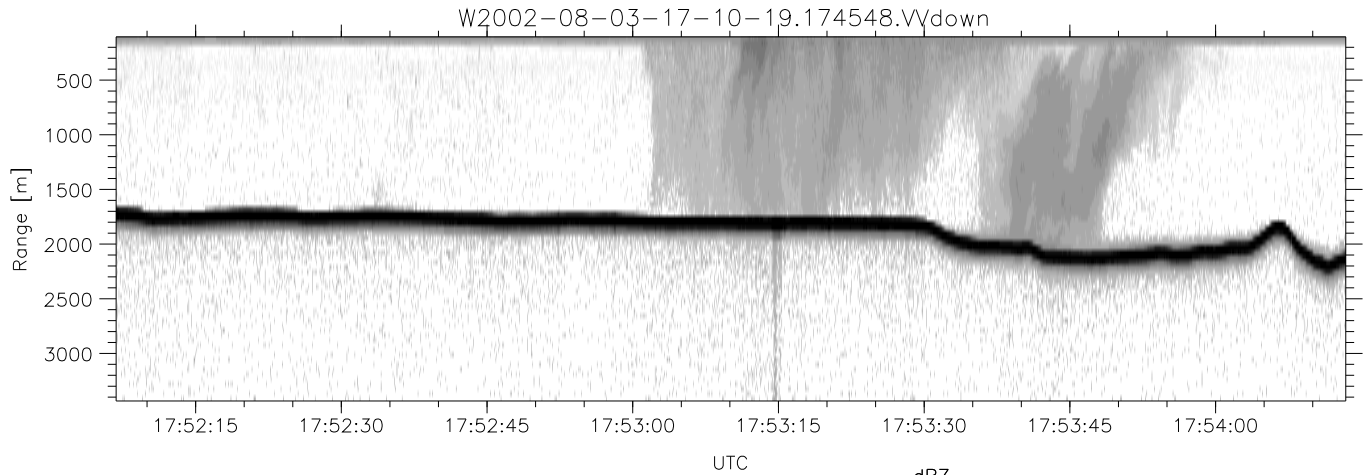


HiCu 2002 (dual-antenna config, modes 1,3,4,5,6,7) Data (cal: 55.0,50.0)

W2002-08-03-17-10-19 - SPPMAG
 IRIG:1,UTC: 17:10:03.35 to 18:02:28.84, Dur: 3145s
 TimeLngth: 3145.49s, TimeInt: 67ms (14.7pps)
 TimeCor=-13.0s, DSPDif(mn,min,mx):67,67,125
 PPS(min,max,std): 14,15,0.44
 Prof: 214 to 46583, NumProf(t/r): 46369/14741
 ProcTime/Recs: 17:45:48-18:02:28/31628-46368
 MxACQtime: 64ms; DRate: 18.0KB/s; Flags: 0, 0, 0
 Pulse: 575ns, IFfilt: 2.0MHz; ppPol: VV
 TxPol: V, PRF: 10 kHz
 Range: Delay 105m, Spacing 45m, Gates 75
 Ave. Pulses: 648, Rng/Prof Aspect@90m/s: 7.4

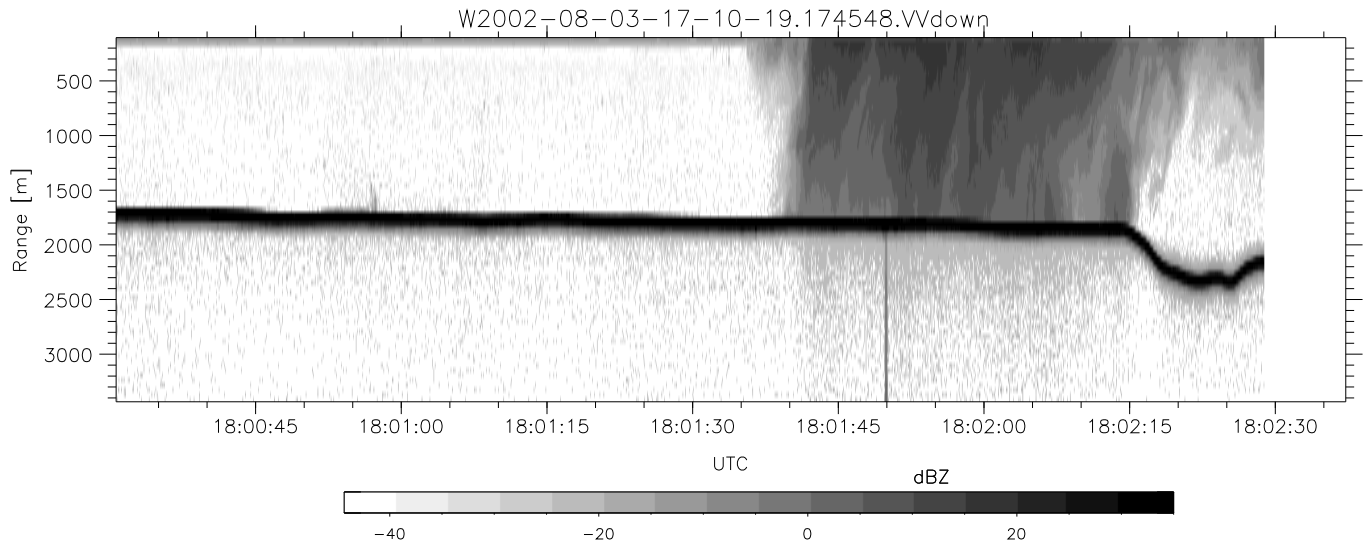
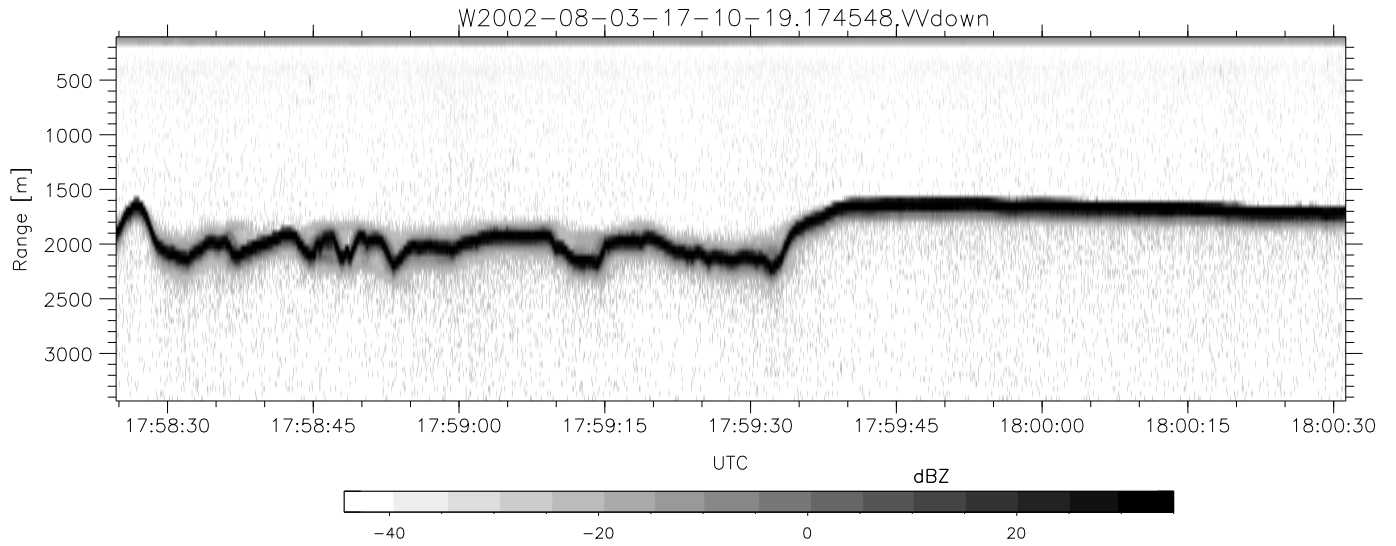
	Min	Max	Mean	Std	Varc%
hhN(dB)	-75.09	-74.12	-74.62	-89.76	3.1
vvN(dB)	-71.10	-69.47	-70.42	-83.72	4.7
vvL(dB)	-6.31	-0.15	-2.82	-9.85	19.8
hvL(dB)	-75.14	-74.09	-74.59	-89.74	3.1
ppN(m/s)	-7.90	7.90	0.00	4.56	
ppT(m/s)	-0.01	0.01	-0.00	0.00	
hv/vv(dB)	-NaN	-47.26	-77.10	-58.44	7331
hnjmp(dB)	-0.68	0.57	-0.09	-14.01	4.0
vnjmp(dB)	-1.05	0.70	-0.16	-12.92	5.3



HiCu 2002 (dual-antenna config, modes 1,3,4,5,6,7) Data (cal: 55.0,50.0)

W2002-08-03-17-10-19 - SPPMAG
 IRIG:1,UTC: 17:10:03.35 to 18:02:28.84, Dur: 3145s
 TimeLngth: 3145.49s, TimeInt: 67ms (14.7pps)
 TimeCor=-13.0s, DSPDif(mn,min,mx):67,67,125
 PPS(min,max,std): 14,15,0.44
 Prof: 214 to 46583, NumProf(t/r): 46369/14741
 ProcTime/Recs: 17:45:48-18:02:28/31628-46368
 MxACQtime: 64ms; DRate: 18.0KB/s; Flags: 0, 0, 0
 Pulse: 575ns, IFfilt: 2.0MHz; ppPol: VV
 TxPol: V, PRF: 10 kHz
 Range: Delay 105m, Spacing 45m, Gates 75
 Ave. Pulses: 648, Rng/Prof Aspect@90m/s: 7.4

	Min	Max	Mean	Std	Varc%
hhN(dB)	-75.09	-74.12	-74.62	-89.76	3.1
vvN(dB)	-71.10	-69.47	-70.42	-83.72	4.7
vvL(dB)	-6.31	-0.15	-2.82	-9.85	19.8
hvL(dB)	-75.14	-74.09	-74.59	-89.74	3.1
ppN(m/s)	-7.90	7.90	0.00	4.56	
ppT(m/s)	-0.01	0.01	-0.00	0.00	
hv/vv(dB)	-NaN	-47.26	-77.10	-58.44	7331
hnjmp(dB)	-0.68	0.57	-0.09	-14.01	4.0
vnjmp(dB)	-1.05	0.70	-0.16	-12.92	5.3



HiCu 2002 (dual-antenna config, modes 1,3,4,5,6,7) Data (cal: 55.0,50.0)

W2002-08-03-17-10-19 - SPPMAG
 IRIG:1,UTC: 17:10:03.35 to 18:02:28.84, Dur: 3145s
 TimeLngth: 3145.49s, TimeInt: 67ms (14.7pps)
 TimeCor=-13.0s, DSPDif(mn,min,mx):67,67,125
 PPS(min,max,std): 14,15,0.44
 Prof: 214 to 46583, NumProf(t/r): 46369/14741
 ProcTime/Recs: 17:45:48-18:02:28/31628-46368
 MxACQtime: 64ms; DRate: 18.0KB/s; Flags: 0, 0, 0
 Pulse: 575ns, IFfilt: 2.0MHz; ppPol: VV
 TxPol: V, PRF: 10 kHz
 Range: Delay 105m, Spacing 45m, Gates 75
 Ave. Pulses: 648, Rng/Prof Aspect@90m/s: 7.4

	Min	Max	Mean	Std	Varc%
hhN(dB)	-75.09	-74.12	-74.62	-89.76	3.1
vvN(dB)	-71.10	-69.47	-70.42	-83.72	4.7
vvL(dB)	-6.31	-0.15	-2.82	-9.85	19.8
hvL(dB)	-75.14	-74.09	-74.59	-89.74	3.1
ppN(m/s)	-7.90	7.90	0.00	4.56	
ppT(m/s)	-0.01	0.01	-0.00	0.00	
hv/vv(dB)	-NaN	-47.26	-77.10	-58.44	7331
hnjmp(dB)	-0.68	0.57	-0.09	-14.01	4.0
vnjmp(dB)	-1.05	0.70	-0.16	-12.92	5.3