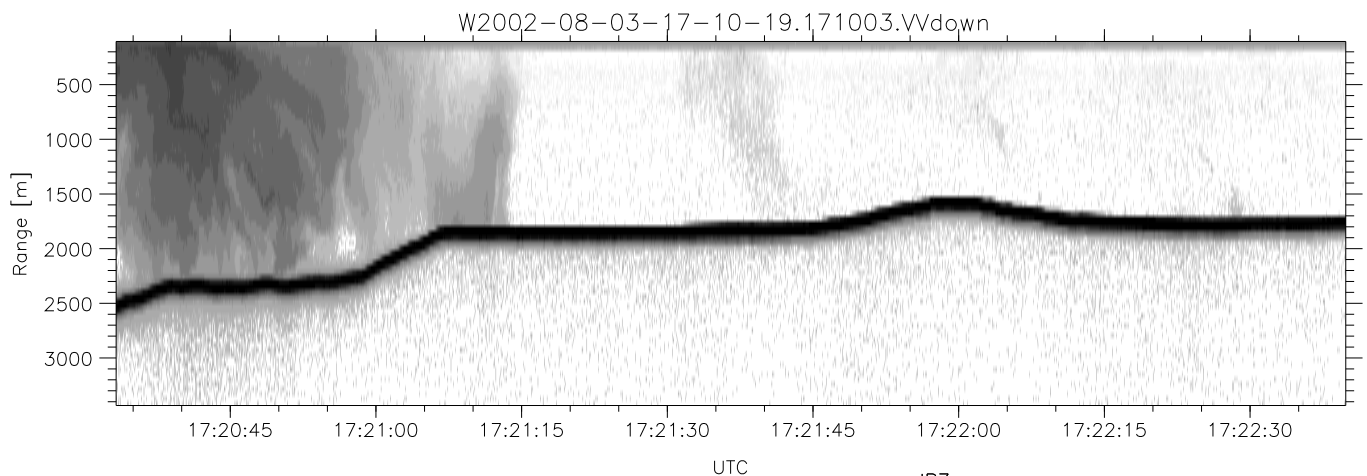
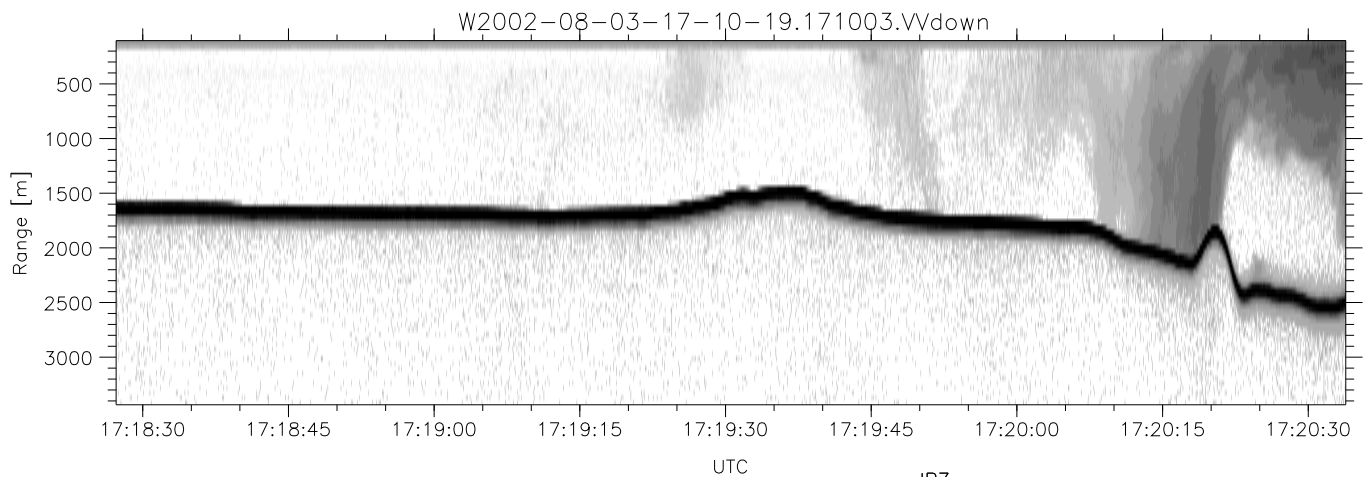
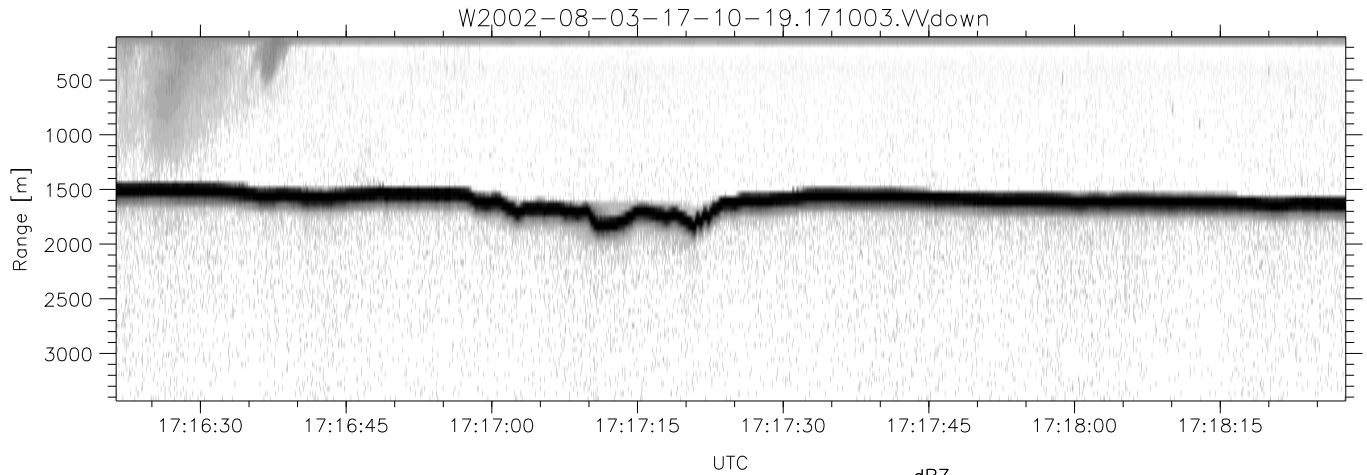


HiCu 2002 (dual-antenna config, modes 1,3,4,5,6,7) Data (cal: 55.0,50.0)

W2002-08-03-17-10-19 - SPPMAG
 IRIG:1,UTC: 17:10:03.35 to 18:02:28.84, Dur: 3145s
 TimeLngth: 3145.49s, TimeInt: 67ms (14.7pps)
 TimeCor=-13.0s, DSPDif(mn,min,mx):67,67,131
 PPS(min,max,std): 11,15,0.45
 Prof: 214 to 46583, NumProf(t/r): 46369/15814
 ProcTime/Recs: 17:10:03-17:27:56/0-15813
 MxACQtime: 64ms; DRate: 18.0KB/s; Flags: 0, 0, 0
 Pulse: 575ns, IFfilt: 2.0MHz; ppPol: VV
 TxPol: V, PRF: 10 kHz
 Range: Delay 105m, Spacing 45m, Gates 75
 Ave. Pulses: 648, Rng/Prof Aspect@90m/s: 7.4

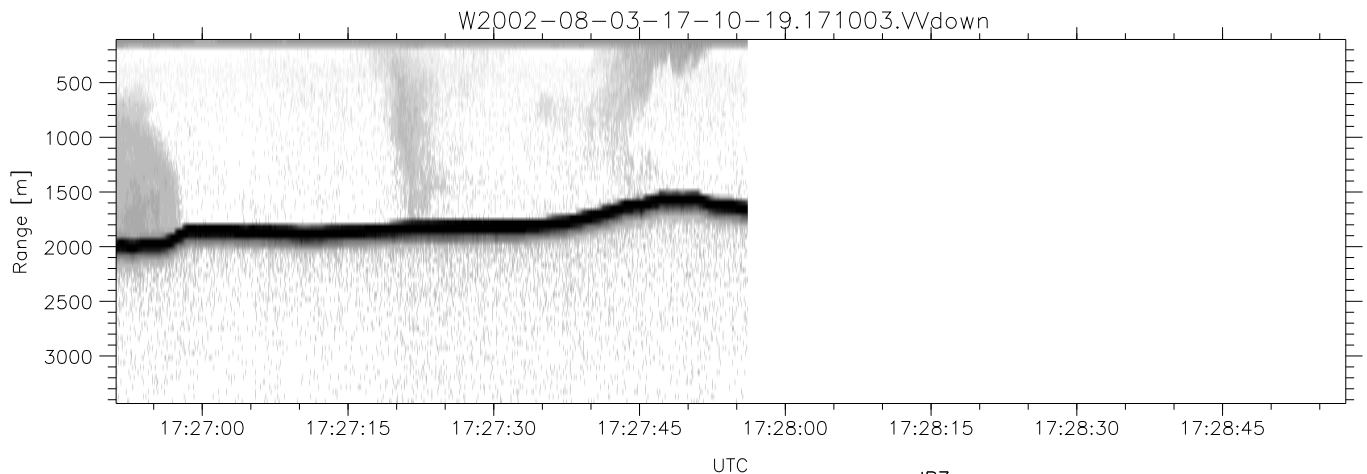
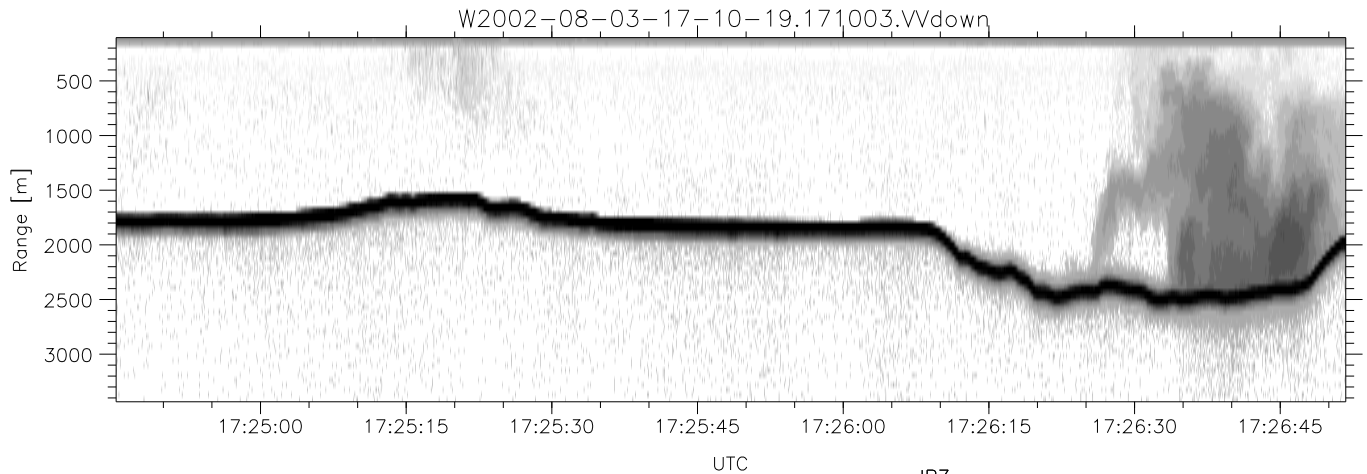
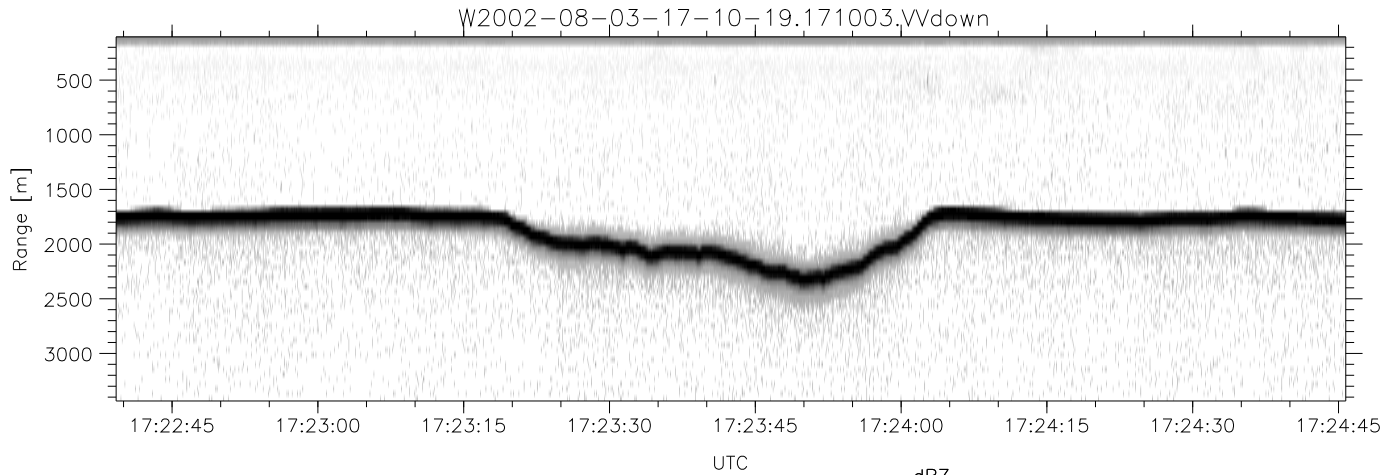
	Min	Max	Mean	Std	Varc%
hhN(dB)	-75.10	-74.06	-74.57	-89.65	3.1
vvN(dB)	-71.29	-69.56	-70.41	-83.92	4.5
vvL(dB)	-5.74	0.03	-2.10	-9.77	17.1
hvL(dB)	-75.05	-73.92	-74.54	-89.63	3.1
ppN(m/s)	-7.90	7.90	0.04	4.51	
ppT(m/s)	-0.01	0.01	-0.00	0.00	
hv/vv(dB)	-NaN	-47.27	-72.30	-58.91	2185
hnjmp(dB)	-0.71	0.64	-0.09	-14.04	4.0
vnjmp(dB)	-1.02	0.83	-0.16	-13.00	5.2



HiCu 2002 (dual-antenna config, modes 1,3,4,5,6,7) Data (cal: 55.0,50.0)

W2002-08-03-17-10-19 - SPPMAG
 IRIG:1,UTC: 17:10:03.35 to 18:02:28.84, Dur: 3145s
 TimeLngth: 3145.49s, TimeInt: 67ms (14.7pps)
 TimeCor=-13.0s, DSPDif(mn,min,mx):67,67,131
 PPS(min,max,std): 11,15,0.45
 Prof: 214 to 46583, NumProf(t/r): 46369/15814
 ProcTime/Recs: 17:10:03-17:27:56/0-15813
 MxACQtime: 64ms; DRate: 18.0KB/s; Flags: 0, 0, 0
 Pulse: 575ns, IFfilt: 2.0MHz; ppPol: VV
 TxPol: V, PRF: 10 kHz
 Range: Delay 105m, Spacing 45m, Gates 75
 Ave. Pulses: 648, Rng/Prof Aspect@90m/s: 7.4

	Min	Max	Mean	Std	Varc%
hhN(dB)	-75.10	-74.06	-74.57	-89.65	3.1
vvN(dB)	-71.29	-69.56	-70.41	-83.92	4.5
vvL(dB)	-5.74	0.03	-2.10	-9.77	17.1
hvL(dB)	-75.05	-73.92	-74.54	-89.63	3.1
ppN(m/s)	-7.90	7.90	0.04	4.51	
ppT(m/s)	-0.01	0.01	-0.00	0.00	
hv/vv(dB)	-NaN	-47.27	-72.30	-58.91	2185
hnjmp(dB)	-0.71	0.64	-0.09	-14.04	4.0
vnjmp(dB)	-1.02	0.83	-0.16	-13.00	5.2



HiCu 2002 (dual-antenna config, modes 1,3,4,5,6,7) Data (cal: 55.0,50.0)

W2002-08-03-17-10-19 - SPPMAG
 IRIG:1,UTC: 17:10:03.35 to 18:02:28.84, Dur: 3145s
 TimeLngth: 3145.49s, TimeInt: 67ms (14.7pps)
 TimeCor=-13.0s, DSPDif(mn,min,mx):67,67,131
 PPS(min,max,std): 11,15,0.45
 Prof: 214 to 46583, NumProf(t/r): 46369/15814
 ProcTime/Recs: 17:10:03-17:27:56/0-15813
 MxACQtime: 64ms; DRate: 18.0KB/s; Flags: 0, 0, 0
 Pulse: 575ns, IFfilt: 2.0MHz; ppPol: VV
 TxPol: V, PRF: 10 kHz
 Range: Delay 105m, Spacing 45m, Gates 75
 Ave. Pulses: 648, Rng/Prof Aspect@90m/s: 7.4

	Min	Max	Mean	Std	Varc%
hhN(dB)	-75.10	-74.06	-74.57	-89.65	3.1
vvN(dB)	-71.29	-69.56	-70.41	-83.92	4.5
vvL(dB)	-5.74	0.03	-2.10	-9.77	17.1
hvL(dB)	-75.05	-73.92	-74.54	-89.63	3.1
ppN(m/s)	-7.90	7.90	0.04	4.51	
ppT(m/s)	-0.01	0.01	-0.00	0.00	
hv/vv(dB)	-NaN	-47.27	-72.30	-58.91	2185
hnjmp(dB)	-0.71	0.64	-0.09	-14.04	4.0
vnjmp(dB)	-1.02	0.83	-0.16	-13.00	5.2