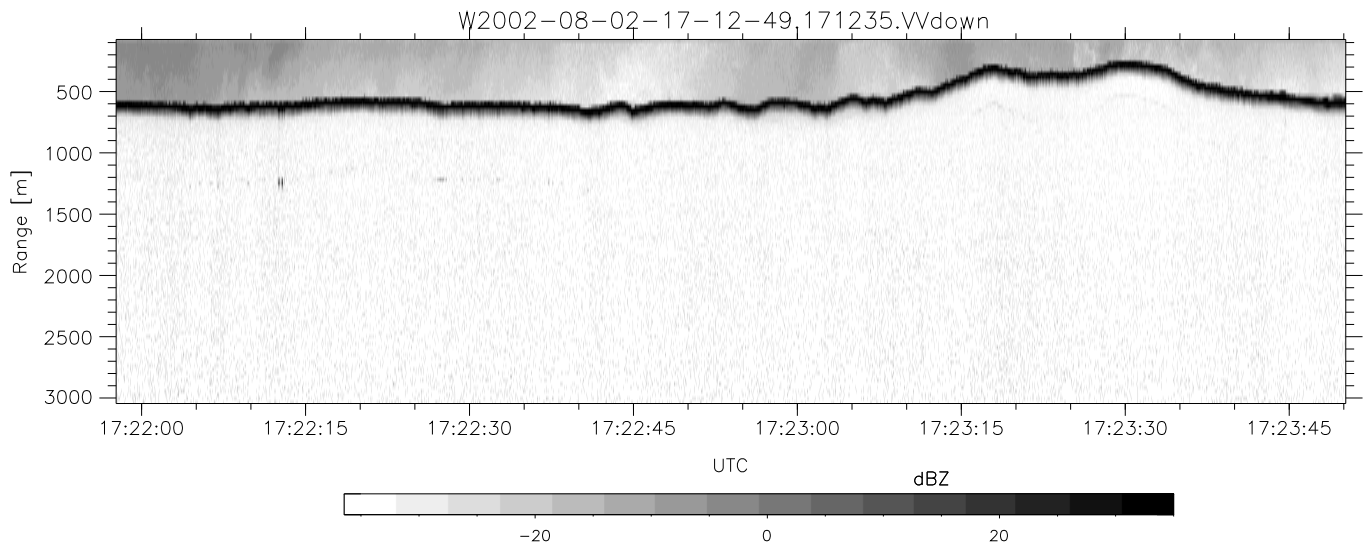
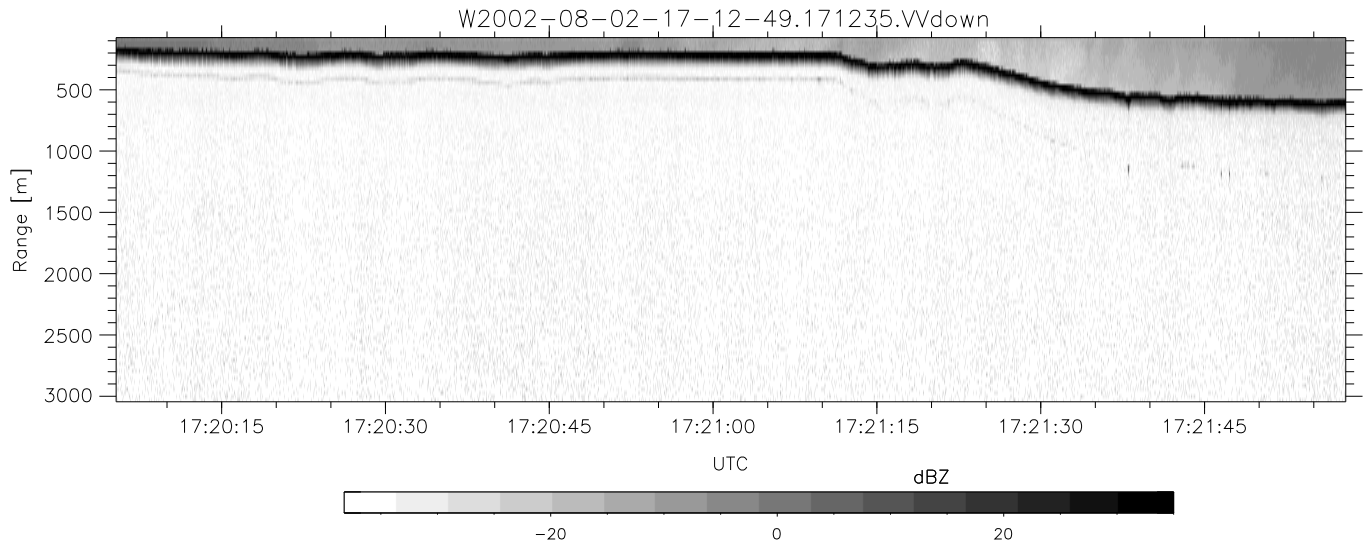
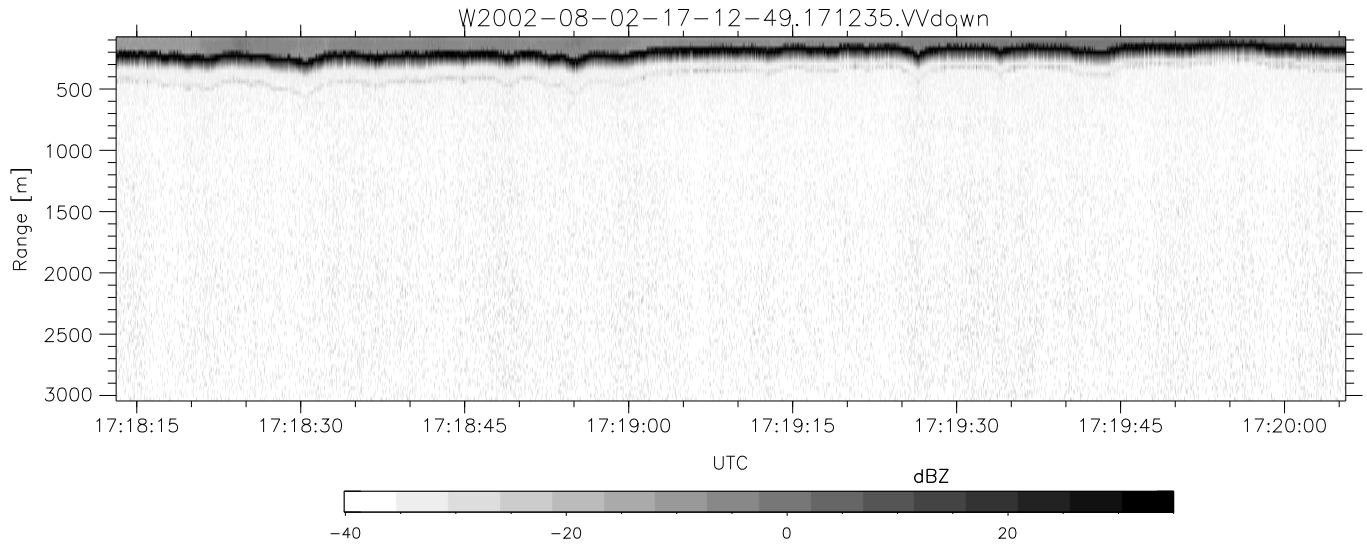


HiCu 2002 (dual-antenna config, modes 1,3,4,5,6,7) Data (cal: 55.0,50.0)

W2002-08-02-17-12-49 - SPPMAG
 IRIG:1,UTC: 17:12:35.69 to 17:53:09.31, Dur: 2434s
 TimeLngth: 2433.62s, TimeInt: 29ms (34.3pps)
 TimeCor=-13.0s, DSPDif(mn,min,mx):29,28,347
 PPS(min,max,std): 23,35,1.24
 Prof: 219 to 83580, NumProf(t/r): 83361/34138
 ProcTime/Recs: 17:12:35-17:29:12/0-34137
 MxACQtime: 26ms; DRate: 55.3KB/s; Flags: 0, 0, 0
 Pulse: 275ns, IFilt: 5.0MHz; ppPol: VV
 TxPol: V, PRF: 20 kHz
 Range: Delay 75m, Spacing 30m, Gates 100
 Ave. Pulses: 520, Rng/Prof Aspect@90m/s: 11.4

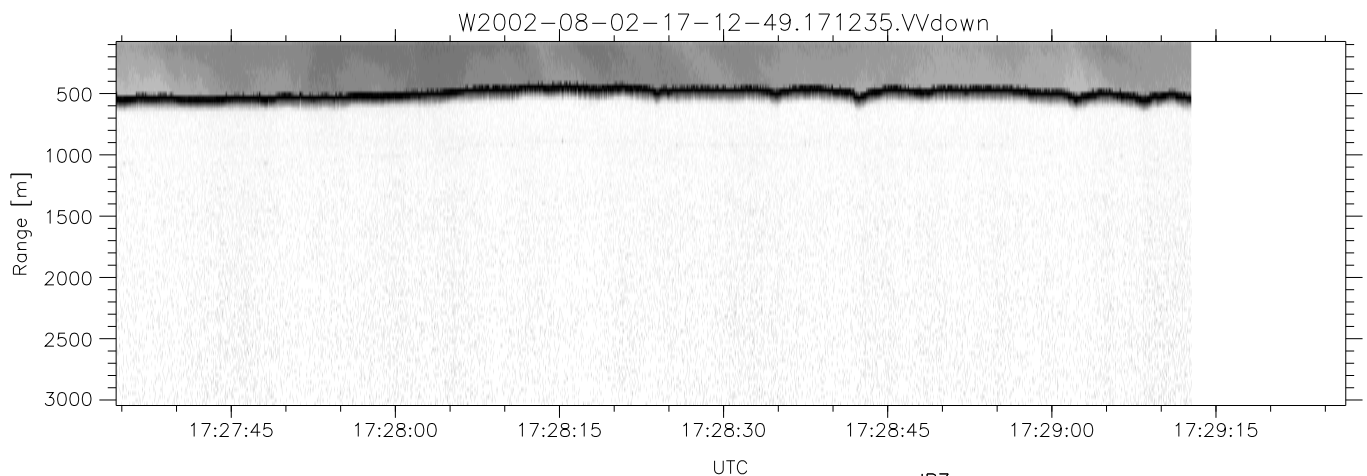
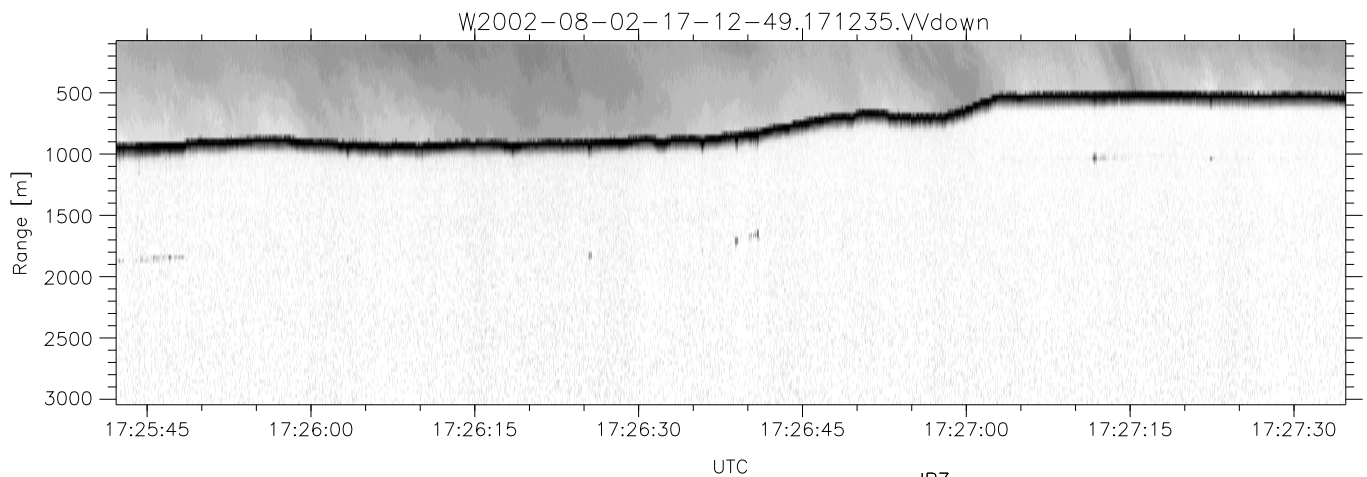
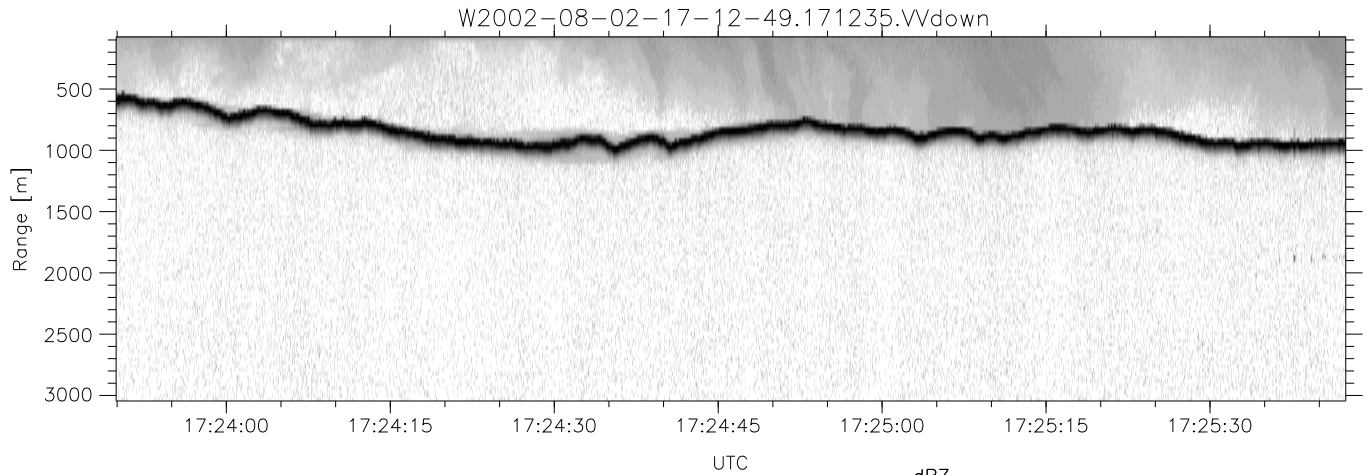
	Min	Max	Mean	Std	Varc%
hhN(dB)	-71.19	-69.67	-70.38	-84.15	4.2
vvN(dB)	-67.61	-65.69	-66.60	-79.52	5.1
vvL(dB)	-11.46	-4.34	-8.22	-14.04	26.2
hvL(dB)	-71.06	-69.70	-70.36	-84.12	4.2
ppN(m/s)	-15.80	15.80	0.10	9.07	
ppT(m/s)	-0.02	0.01	-0.00	0.00	
hv/vv(dB)	-NaN	-41.64	-62.30	-52.54	945.
hnjmp(dB)	-0.72	1.16	0.12	-12.51	5.5
vnjmp(dB)	-0.74	1.17	0.16	-12.33	5.6



HiCu 2002 (dual-antenna config, modes 1,3,4,5,6,7) Data (cal: 55.0,50.0)

W2002-08-02-17-12-49 - SPPMAG
 IRIG:1,UTC: 17:12:35.69 to 17:53:09.31, Dur: 2434s
 TimeLngth: 2433.62s, TimeInt: 29ms (34.3pps)
 TimeCor=-13.0s, DSPDif(mn,min,mx):29,28,347
 PPS(min,max,std): 23,35,1.24
 Prof: 219 to 83580, NumProf(t/r): 83361/34138
 ProcTime/Recs: 17:12:35-17:29:12/0-34137
 MxACQtime: 26ms; DRate: 55.3KB/s; Flags: 0, 0, 0
 Pulse: 275ns, IFfilt: 5.0MHz; ppPol: VV
 TxPol: V, PRF: 20 kHz
 Range: Delay 75m, Spacing 30m, Gates 100
 Ave. Pulses: 520, Rng/Prof Aspect@90m/s: 11.4

	Min	Max	Mean	Std	Varc%
hhN(dB)	-71.19	-69.67	-70.38	-84.15	4.2
vvN(dB)	-67.61	-65.69	-66.60	-79.52	5.1
vvL(dB)	-11.46	-4.34	-8.22	-14.04	26.2
hvL(dB)	-71.06	-69.70	-70.36	-84.12	4.2
ppN(m/s)	-15.80	15.80	0.10	9.07	
ppT(m/s)	-0.02	0.01	-0.00	0.00	
hv/vv(dB)	-NaN	-41.64	-62.30	-52.54	945.
hnjmp(dB)	-0.72	1.16	0.12	-12.51	5.5
vnjmp(dB)	-0.74	1.17	0.16	-12.33	5.6



HiCu 2002 (dual-antenna config, modes 1,3,4,5,6,7) Data (cal: 55.0,50.0)

W2002-08-02-17-12-49 - SPPMAG
 IRIG:1,UTC: 17:12:35.69 to 17:53:09.31, Dur: 2434s
 TimeLngth: 2433.62s, TimeInt: 29ms (34.3pps)
 TimeCor=-13.0s, DSPDif(mn,min,mx):29,28,347
 PPS(min,max,std): 23,35,1.24
 Prof: 219 to 83580, NumProf(t/r): 83361/34138
 ProcTime/Recs: 17:12:35-17:29:12/0-34137
 MxACQtime: 26ms; DRate: 55.3KB/s; Flags: 0, 0, 0
 Pulse: 275ns, IFilt: 5.0MHz; ppPol: VV
 TxPol: V, PRF: 20 kHz
 Range: Delay 75m, Spacing 30m, Gates 100
 Ave. Pulses: 520, Rng/Prof Aspect@90m/s: 11.4

	Min	Max	Mean	Std	Varc%
hhN(dB)	-71.19	-69.67	-70.38	-84.15	4.2
vvN(dB)	-67.61	-65.69	-66.60	-79.52	5.1
vvL(dB)	-11.46	-4.34	-8.22	-14.04	26.2
hvL(dB)	-71.06	-69.70	-70.36	-84.12	4.2
ppN(m/s)	-15.80	15.80	0.10	9.07	
ppT(m/s)	-0.02	0.01	-0.00	0.00	
hv/vv(dB)	-NaN	-41.64	-62.30	-52.54	945.
hnjmp(dB)	-0.72	1.16	0.12	-12.51	5.5
vnjmp(dB)	-0.74	1.17	0.16	-12.33	5.6